



# CAMELBACK CENTER

2355 EAST CAMELBACK RD • PHOENIX, AZ

**nuveen**  
REAL ESTATE

 **CUSHMAN &  
WAKEFIELD**



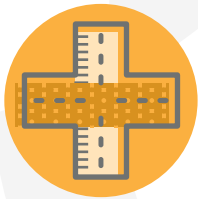
# PROPERTY FEATURES



**BUILDING**  
232,615 RSF  
Class "A" office building  
9 stories



**PARKING**  
4 ½ levels of subterranean garage  
providing direct access to tenant  
suites, and 6 visitor spots at the  
entry of the building



**LOCATED**  
Right on 24th St in the  
heart of the prestigious  
Camelback Corridor



**DIRECT ACCESS**  
To the 51 highway off of Highland  
and within minutes of nearby amenities  
such as Biltmore Fashion Park, Town  
and Country, and The Esplanade



**ONSITE AMENITIES**  
Including property management,  
24/7 security, 2nd level outdoor  
patio, new tenant amenity lounge,  
and new conference center



**LIVE, WORK, PLAY ENVIRONMENT**  
With executive housing nearby and  
hundreds of entertainment options  
within minutes Camelback Center  
provides a desired work environment



LOCATION

# HIGHLIGHTS

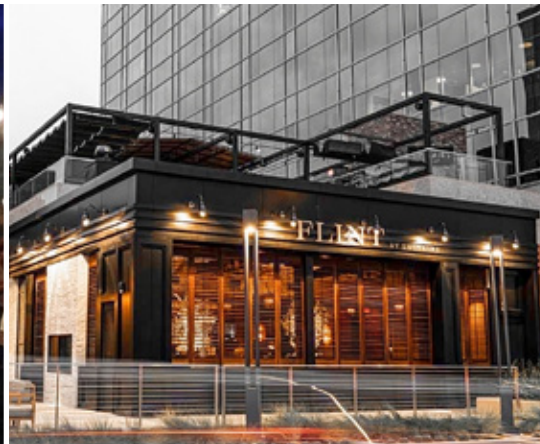
**1,243**  
RESTAURANTS

**3,919**  
RETAILERS

**135**  
HOTELS

**13**  
APARTMENT  
COMPLEXES

\*WITHIN A 5-MILE RADIUS





**GREG MAYER**

Primary Contact

[greg.mayer@cushwake.com](mailto:greg.mayer@cushwake.com)

+1 602 229 5905

**TIM WHITTEMORE**

Secondary Contact

+1 602 229 5931

[tim.whittemore@cushwake.com](mailto:tim.whittemore@cushwake.com)

**PATRICK SCHRIMSHER**

Tertiary Contact

[patrick.schrimsher@cushwake.com](mailto:patrick.schrimsher@cushwake.com)

+1 602 468 8529

**nuveen**  
REAL ESTATE



2555 E Camelback Rd Ste 400 | Phoenix, Arizona 85016  
p+1 602 954 9000 | f+1 602 253 0528 [cushmanwakefield.com](http://cushmanwakefield.com)