



FINANCIAL  
DISTRICT

NEW YORK  
NY

76  
**PEARL**  
STREET

# SPACE DETAILS

## LOCATION

South block between Broadway and Sixth Avenue

## APPROXIMATE SIZE

Ground Floor	800 SF
Basement	800 SF
Total	1,600 SF

## CEILING HEIGHT

Ground Floor	13 FT
--------------	-------

## FRONTAGE

15 Ft on Pearl Street

## TERM

Negotiable

## POSSESSION

Immediate

## SITE STATUS

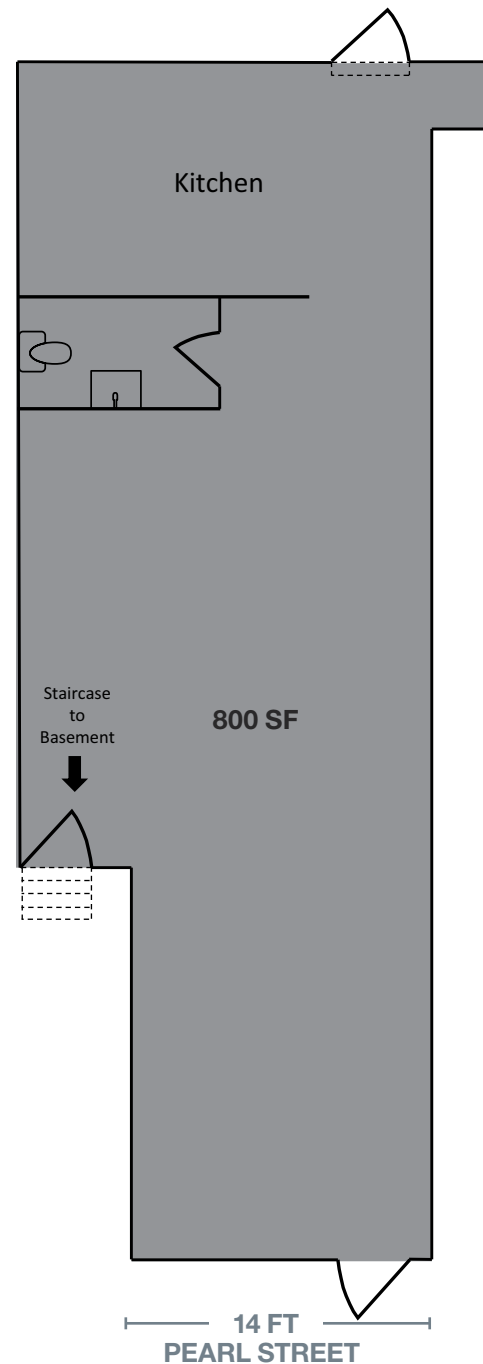
Formerly Nu Sushi

## NEIGHBORS

Le Pain Quotidien, Springbone Kitchen, Insomnia Cookies, Financier Patisserie, Harry's NYC, Chase, Essen, New York Health & Racquet Club

## COMMENTS

## GROUND FLOOR



# AREA RETAIL



⊕ COMING SOON

## CONTACT EXCLUSIVE AGENTS

**BRADLEY SOME**  
 212.916.3385  
 bradley.some@ngkf.com

**JASON PRUGER**  
 212.372.2094  
 jpruger@ngkf.com

**LUCAS KOOYMAN**  
 212.372.2384  
 lkooyman@ngkf.com



NGKF.COM

© 2019 NEWMARK KNIGHT FRANK RETAIL. The information contained herein has been obtained from sources deemed reliable but has not been verified and no guarantee, warranty or representation, either express or implied, is made with respect to such information. Terms of sale or lease and availability are subject to change or withdrawal without notice.