

# 485 FIFTH AVENUE



# SPACE DETAILS

## LOCATION

East block between East 41st and 42nd Streets

## APPROXIMATE SIZE

Ground Floor	763 SF
Mezzanine	844 SF
Total	1607 SF

## FRONTAGE

15 FT on Fifth Avenue

## TERM

Long term

## POSSESSION

Immediate

## SITE STATUS

Formerly On/Off Digital World

## NEIGHBORS

Sephora, Cha Cha Matcha, BCBGMAXARIA,  
Lady M Cake, Zara, COS, & Other Stories, and Alice + Olivia

## COMMENTS

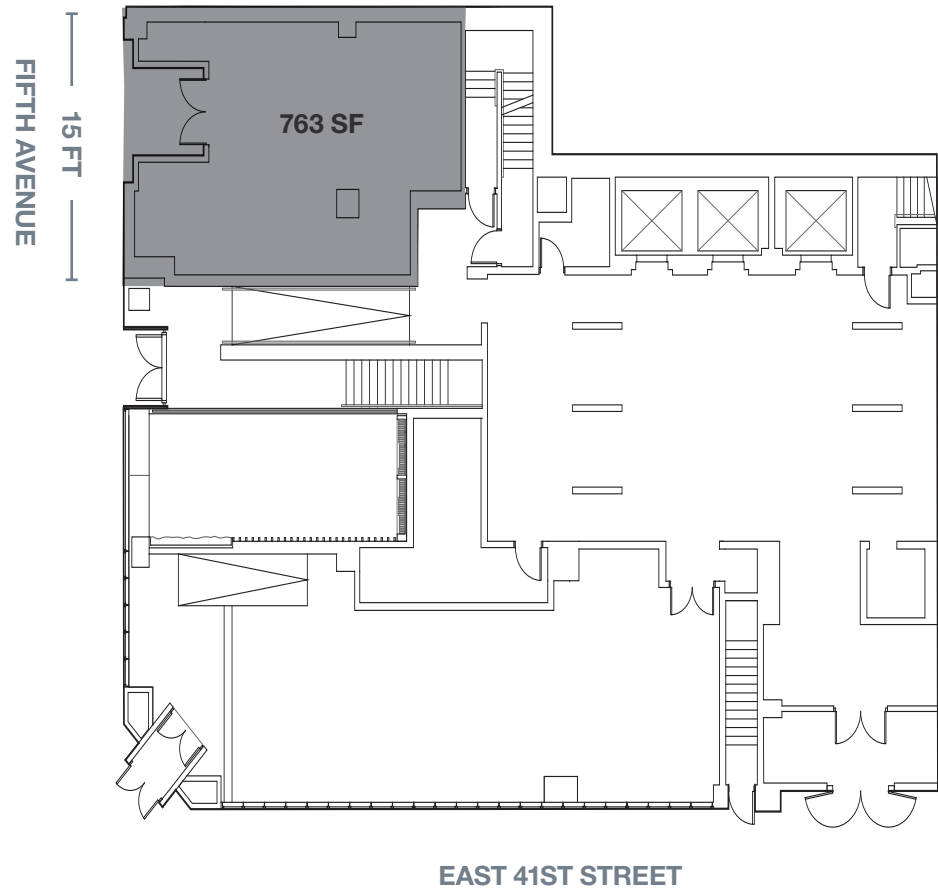
Food uses accepted

On the Fifth Avenue shopping corridor, directly across the street from  
The New York Public Library and Bryant Park

In close proximity to Grand Central Terminal and the 42nd Street subway station

Space is configured with two window boxes facing north and south on Fifth Avenue

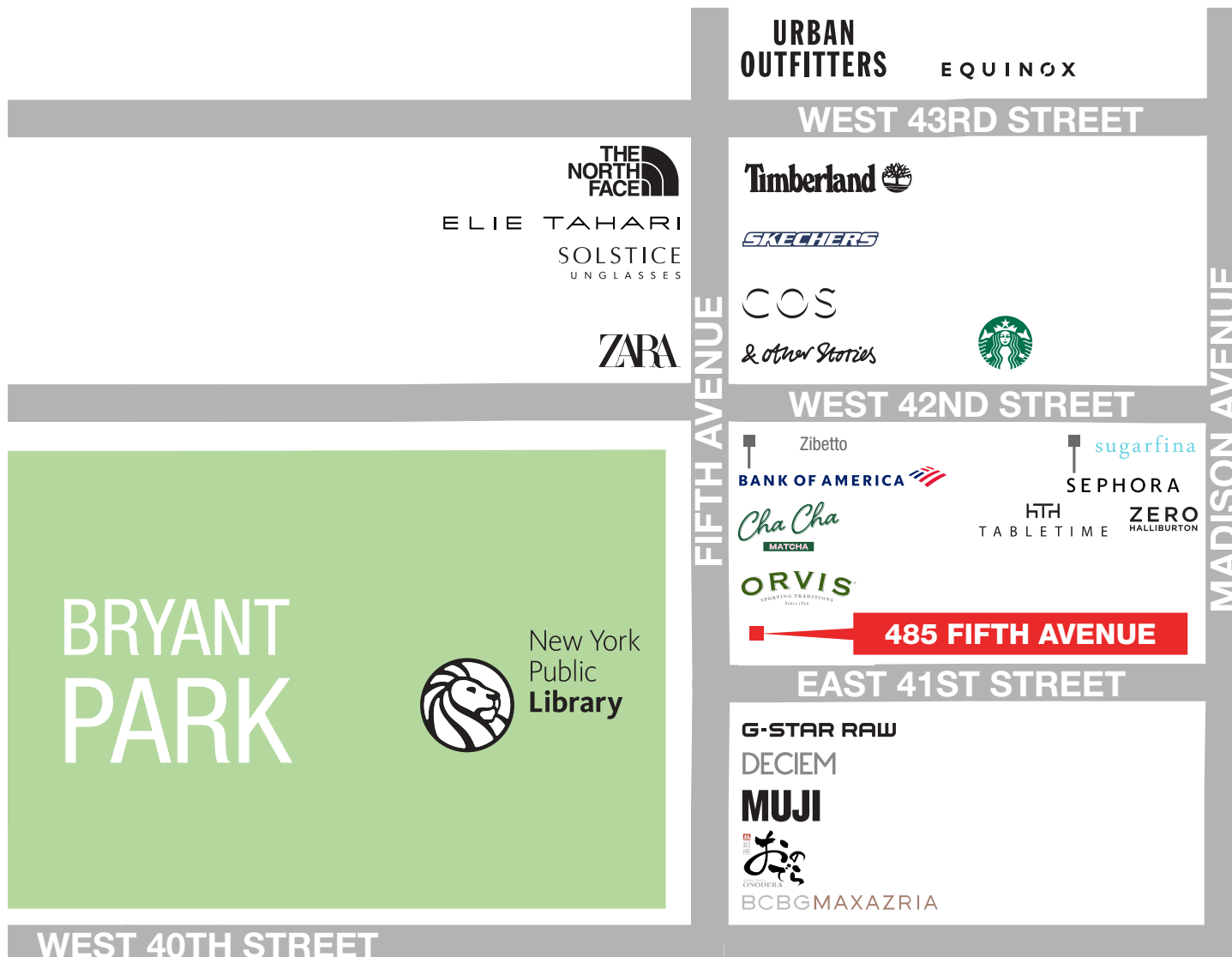
## GROUND FLOOR



# AREA NEIGHBORS



# AREA RETAIL



⊕ COMING SOON

## CONTACT EXCLUSIVE AGENTS

**MICHAEL PASTER**  
 212.351.9345  
 michael.paster@ngkf.com

**JARED ROBINS**  
 212.916.2925  
 jared.robins@ngkf.com

**ARIEL SCHUSTER**  
 212.331.0132  
 ariel.schuster@ngkf.com

