

690

NORTH COFCO CENTER



AVAILABLE FOR LEASE

2-STORY ±76,731 SF CLASS B OFFICE BUILDING

690 North Cofco Center Court, Phoenix, AZ 85008



CBRE

BUILDING HIGHLIGHTS



FULL FLOOR OPPORTUNITY

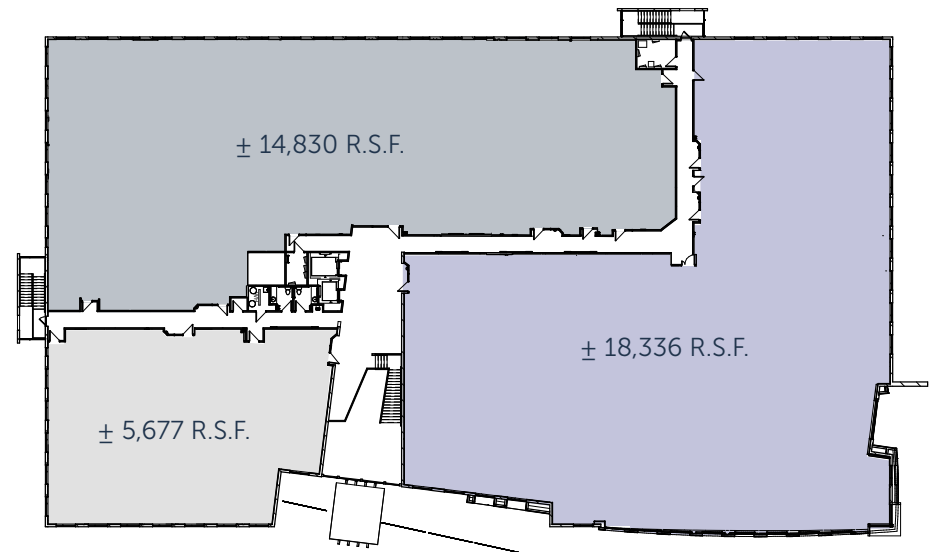
NEW OWNERSHIP/MANAGEMENT

BUILDING & MONUMENT SIGNAGE AVAILABLE

4.0:1,000 PARKING RATIO

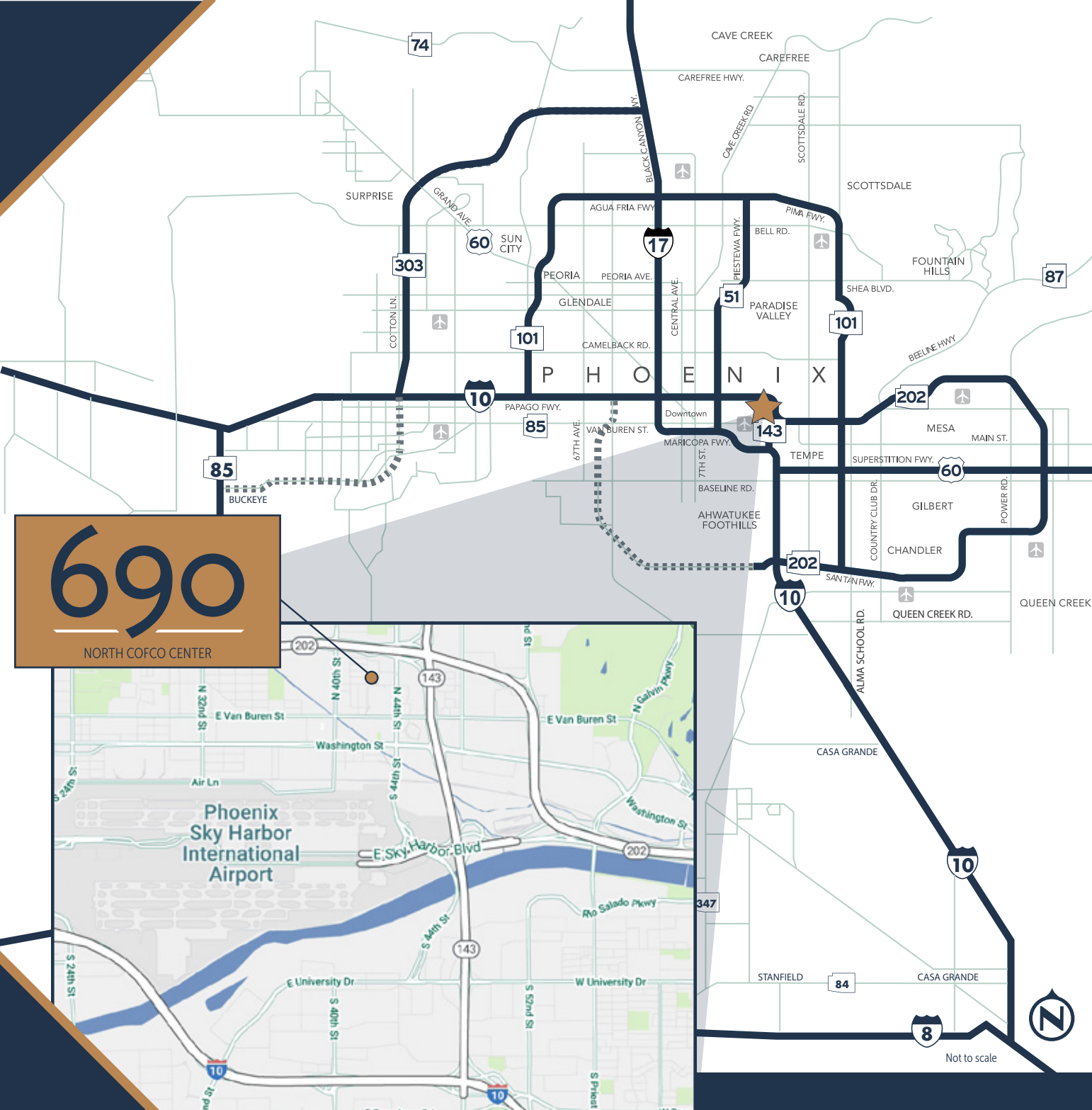


SECOND FLOOR ±38,843 RSF



Not to scale
All measurements are approximate





690
NORTH COFCO CENTER



WITHIN TWO MILES OF
Phoenix Sky Harbor Airport

202

ONE BLOCK SOUTH OF
Loop 202 Freeway



WALKING DISTANCE TO
Phoenix Light Rail
providing direct access to retail,
dining & hotel amenities



WITHIN ONE MILE, OVER
25 restaurants & 5 major hotels



Not to scale



690

Contact Us

COREY HAWLEY

602.735.1742

corey.hawley@cbre.com

JIMMY CORNISH

602.735.1741

jimmy.cornish@cbre.com

SEAN SPELLMAN

602.735.5615

sean.spellman@cbre.com



CBRE

© 2019 CBRE, Inc. All rights reserved. This information has been obtained from sources believed reliable, but has not been verified for accuracy or completeness. Any projections, opinions, or estimates are subject to uncertainty. The information may not represent the current or future performance of the property. You and your advisors should conduct a careful, independent investigation of the property and verify all information. Any reliance on this information is solely at your own risk. CBRE and the CBRE logo are service marks of CBRE, Inc. All other marks displayed on this document are the property of their respective owners. Photos herein are the property of their respective owners. Use of these images without the express written consent of the owner is prohibited.