



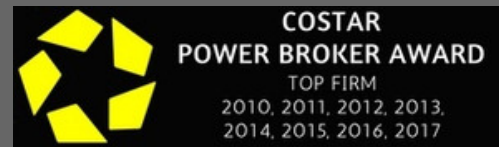
3390 WEST 1987 SOUTH, SALT LAKE CITY 84104



SALT LAKE CITY INDUSTRIAL FOR LEASE

- 2,000 SF Industrial Space Available
- Clearance Height: 16'
- (1) 12' X 14' GL Door
- 3 Phase Power | 200 Amp | 208 Volt
- Site Size: 1.0 Acre
- (34) Shared Parking Spaces
- Total Building: 14,000 SF
- Great Location, Just Off 2100 South
- Convenient Access to Bangerter Hwy, I-215 and S.R 201

LEASE RATE:  
\$1,000.00/MONTH NNN



801.617.1700

WEST HARADIN  
WEST.HARADIN@CRCNATIONWIDE.COM



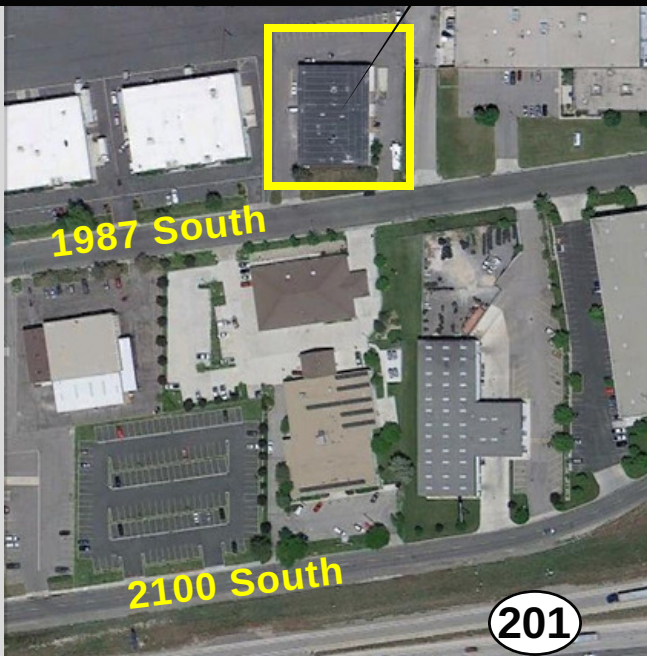
BAILEE POWELL  
BAILEE.POWELL@CRCNATIONWIDE.COM



# cRc Nationwide

COMMERCIAL REAL ESTATE CONSULTANTS

3390 WEST 1987 SOUTH, SALT LAKE CITY 84104



801.617.1700

WEST HARADIN

WEST.HARADIN@CRCNATIONWIDE.COM



BAILEE POWELL

BAILEE.POWELL@CRCNATIONWIDE.COM