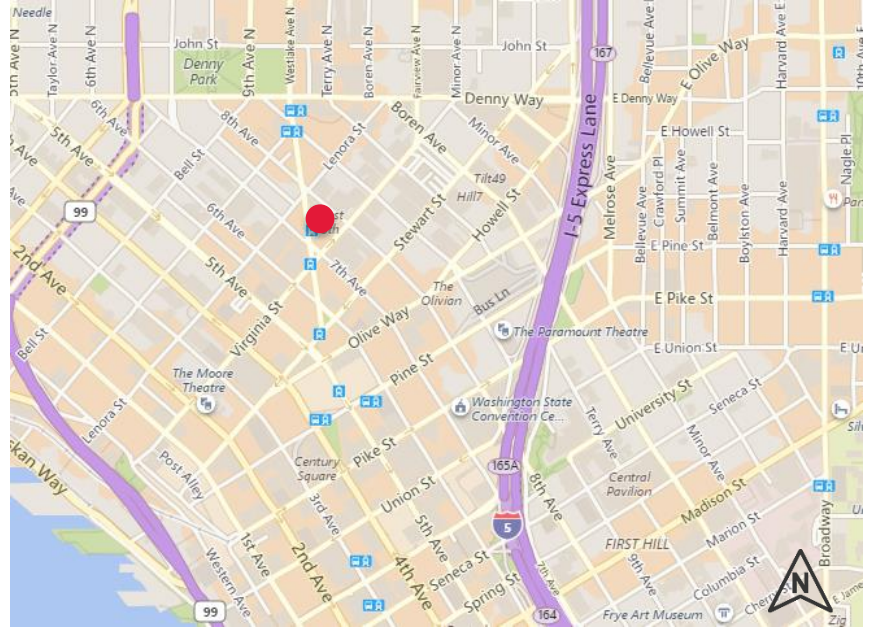


2001 8th Avenue, Seattle WA 98121



WEST 8th

It's the best of all worlds. Right in the middle of bustling South Lake Union and the CBD.

AVAILABLE SPACE

- Floor 25 – 11,797 RSF

OCCUPANCY

- Available January 1, 2019

SUBLEASE TERM

- Expiration date – September 30, 2021

RENT

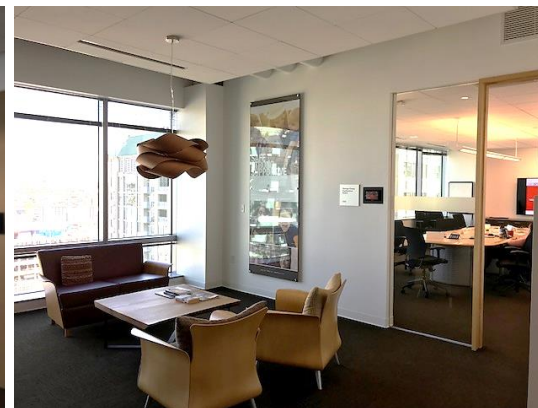
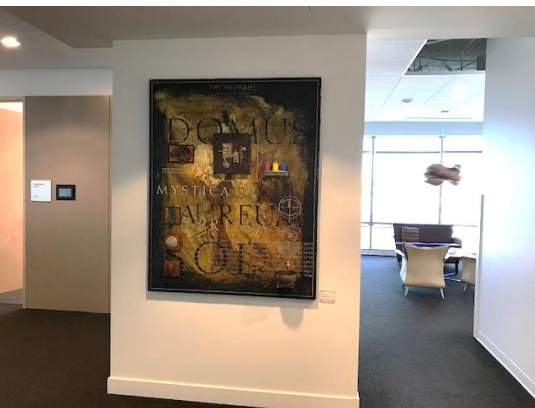
- Competitive market rates

DESCRIPTION:

- Suite is almost fully furnished
- Plug & play opportunity
- Parking is available

FOR ADDITIONAL INFORMATION, PLEASE CONTACT: Kelley Sigl // kelly@kinzer.com // 206.602.2094

West 8th
Floor 25: 11,797 SF



FOR ADDITIONAL INFORMATION, PLEASE CONTACT: Kelley Sigl // kelly@kinzer.com // 206.602.2094