



PARK SQUARE RETAIL

East 10th Street

Runnings-Anchored Retail Center



3809 East 10th Street
Sioux Falls, SD 57103



size

32,389 sqft
(can be sub-divided to a minimum of 15,000 sqft)



price

\$12.50 per sqft (NNN)
(NNN estimate = \$3.00)



location

High-profile retail building on East 10th Street, the #1 east/west corridor in Sioux Falls.



traffic

East 10th Street: 24,600 VPD
Interstate 229: 39,565
Highway 100: 13,200



parking

273 parking stalls (1:150)



co-tenants

Runnings, Pizza Ranch, HyVee, Starbucks, Jimmy John's, Caribou Coffee, Taco Bell, Shopko Optical

Information deemed reliable but not guaranteed.

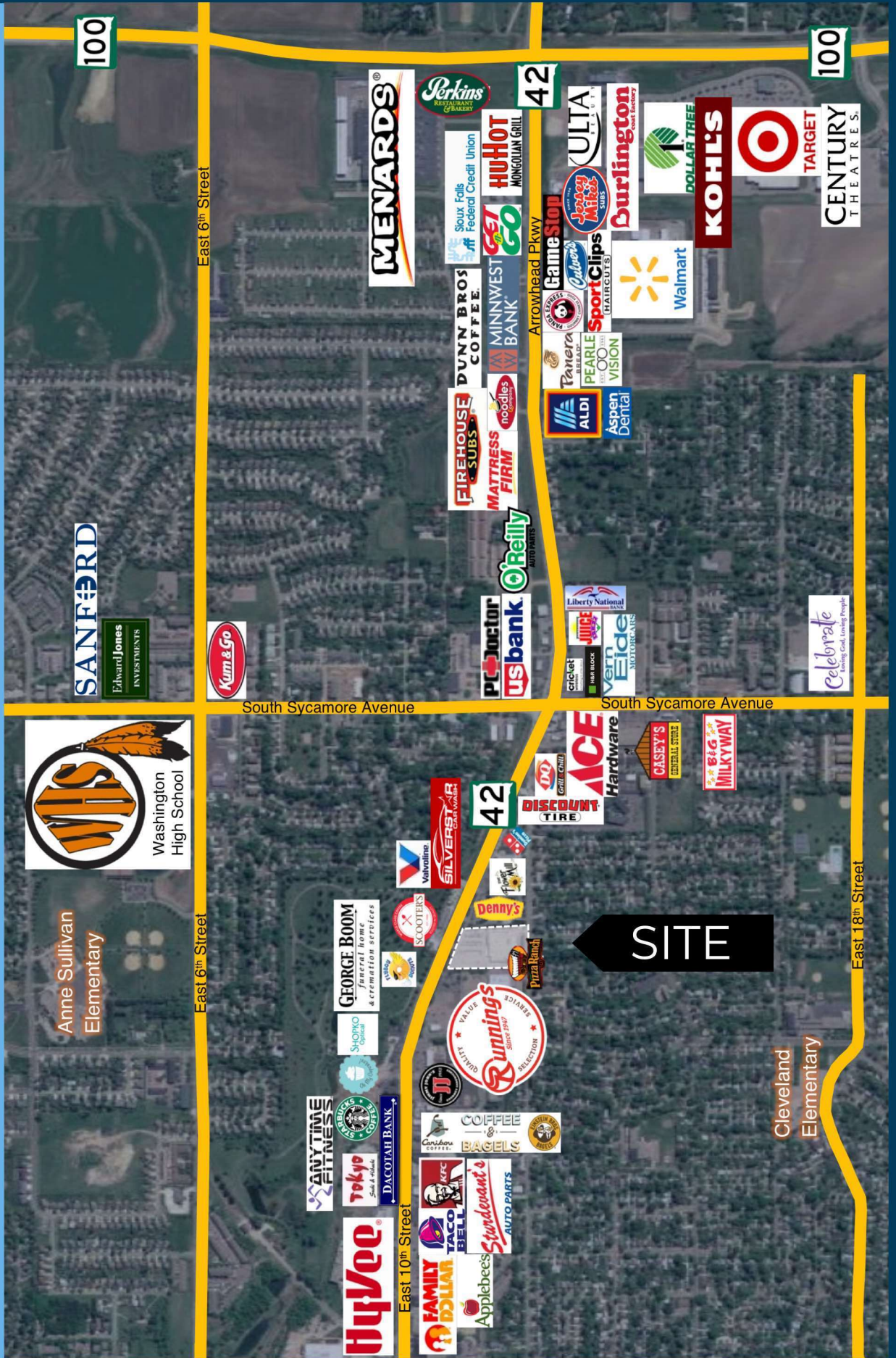


Lake Lorraine | 2571 S. Westlake Drive #100
Sioux Falls, South Dakota 57106
VBCLink.com | 605.361.8211



605.376.0127
Ryan@VBCLink.com

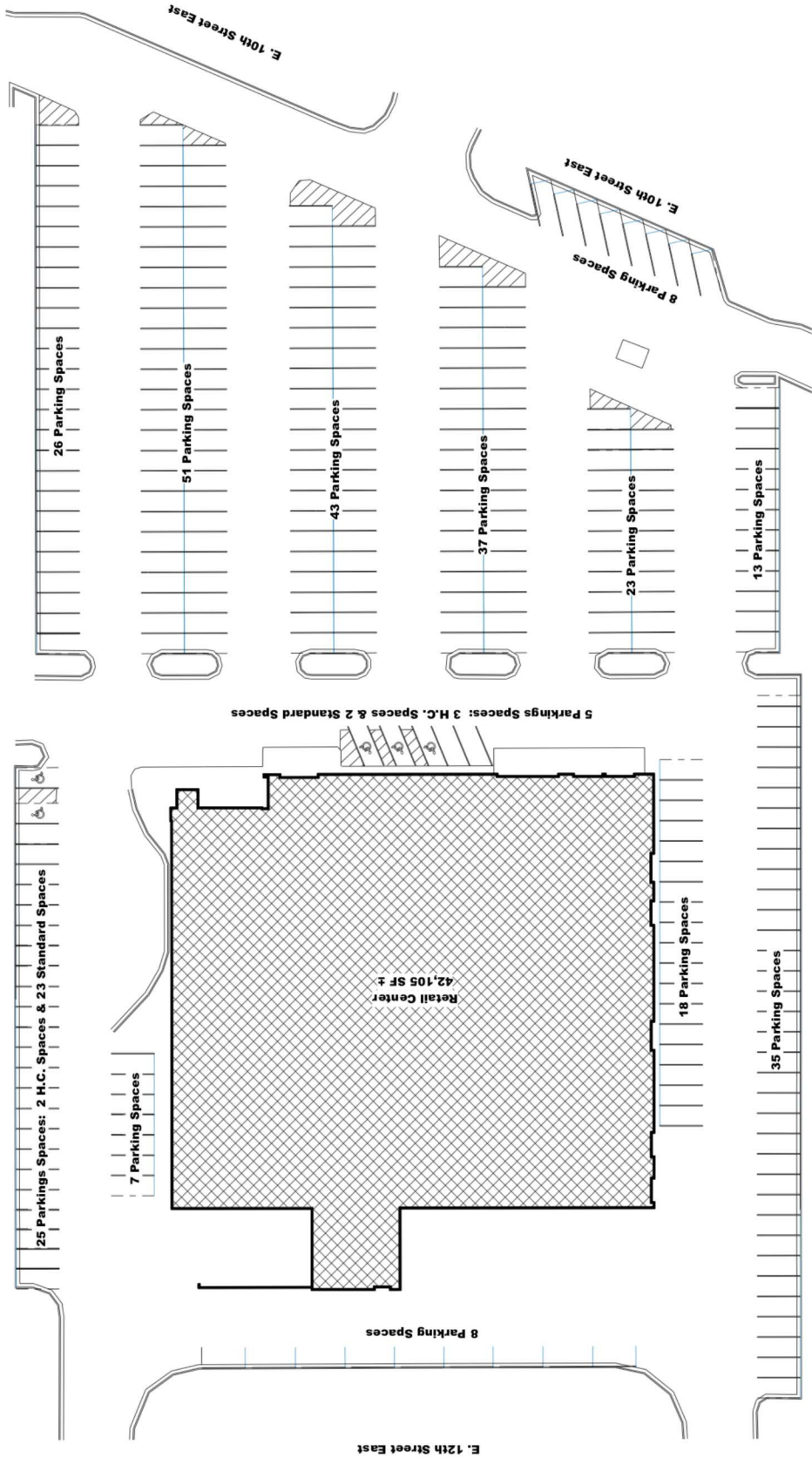
AREA MAP



SITE AERIAL

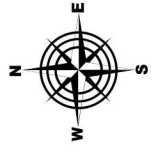


OVERALL SITE PLAN

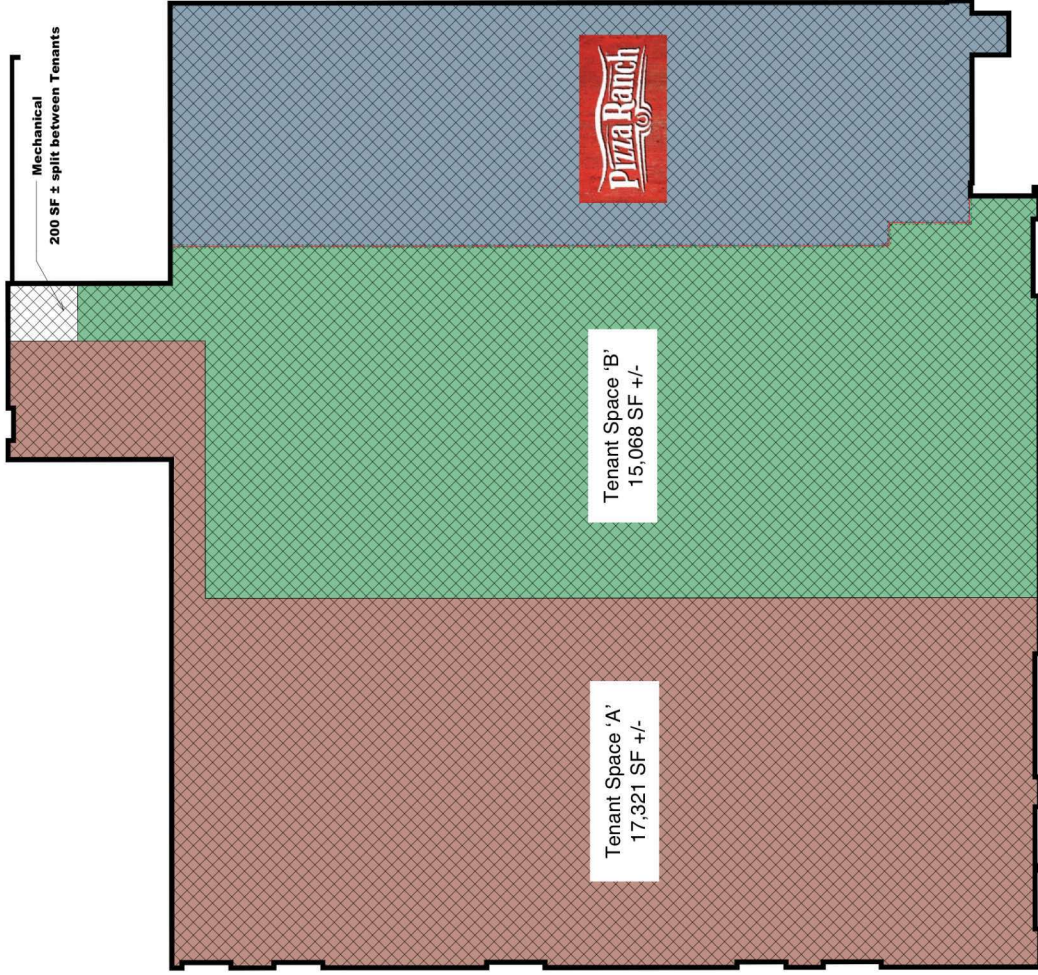


1 Overall Site Plan

Scale: 1" = 30'-0"



FLOOR PLAN



1 Overall Main Floor Plan
Scale: 1/16" = 1'-0"

Square Footage: 42,105 SF±

PROPERTY PHOTOS

