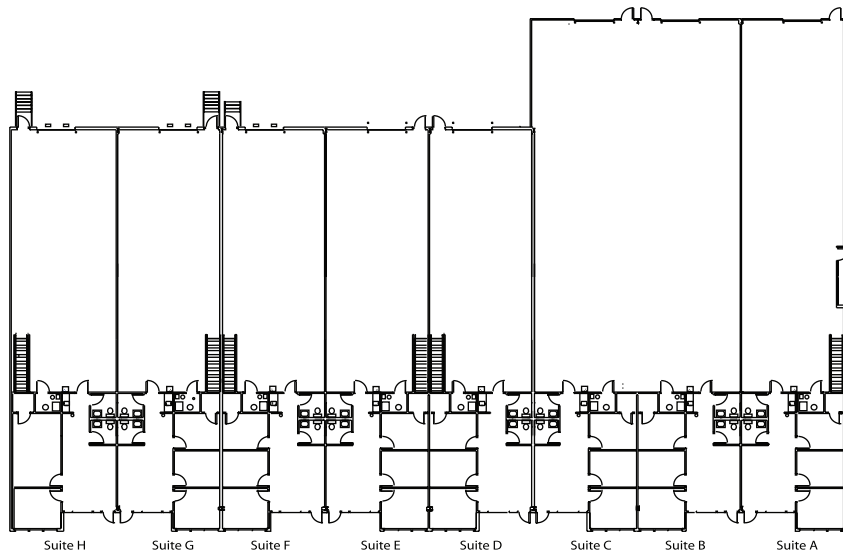




MATHER REAL ESTATE

This space is located at:
8302 Hedge Lane Terr
Shawnee, KS 66227
(Hwy 7 and 83rd Street)



Easy Access
Kansas Tax Base
DI or DH Docks at ALL Units
Good Signage

FOR LEASE

Perimeter Park

4,693 Square Feet

3 Units

- 958 sq. ft. Office Space w/ 3 Private Offices
- 958 sq. ft. Storage Mezzanine Above Office Area
- 2,777 sq. ft. Warehouse Space
- Two Restrooms
- Open Reception Area
- Coffee Area with Sink
- Drive In Loading

3,880 Square Feet

5 Units

- 958 sq. ft. Office Space w/ 3 Private Offices
- 958 sq. ft. Storage Mezzanine Above Office Area
- 1,964 sq. ft. Warehouse Space
- Two Restrooms
- Open Reception Area
- Coffee Area with Sink
- Two Units With 4' Loading Docks
- Two Units With Drive-In Loading Docks
- One Unit With UPS High Loading Dock

For information contact:

MATHER REAL ESTATE | **Sharon McLaughlin, Broker**

(o) 913 469-4040 ext 112 (c) 913 927-1418

(e) sharonm@matherco.com

