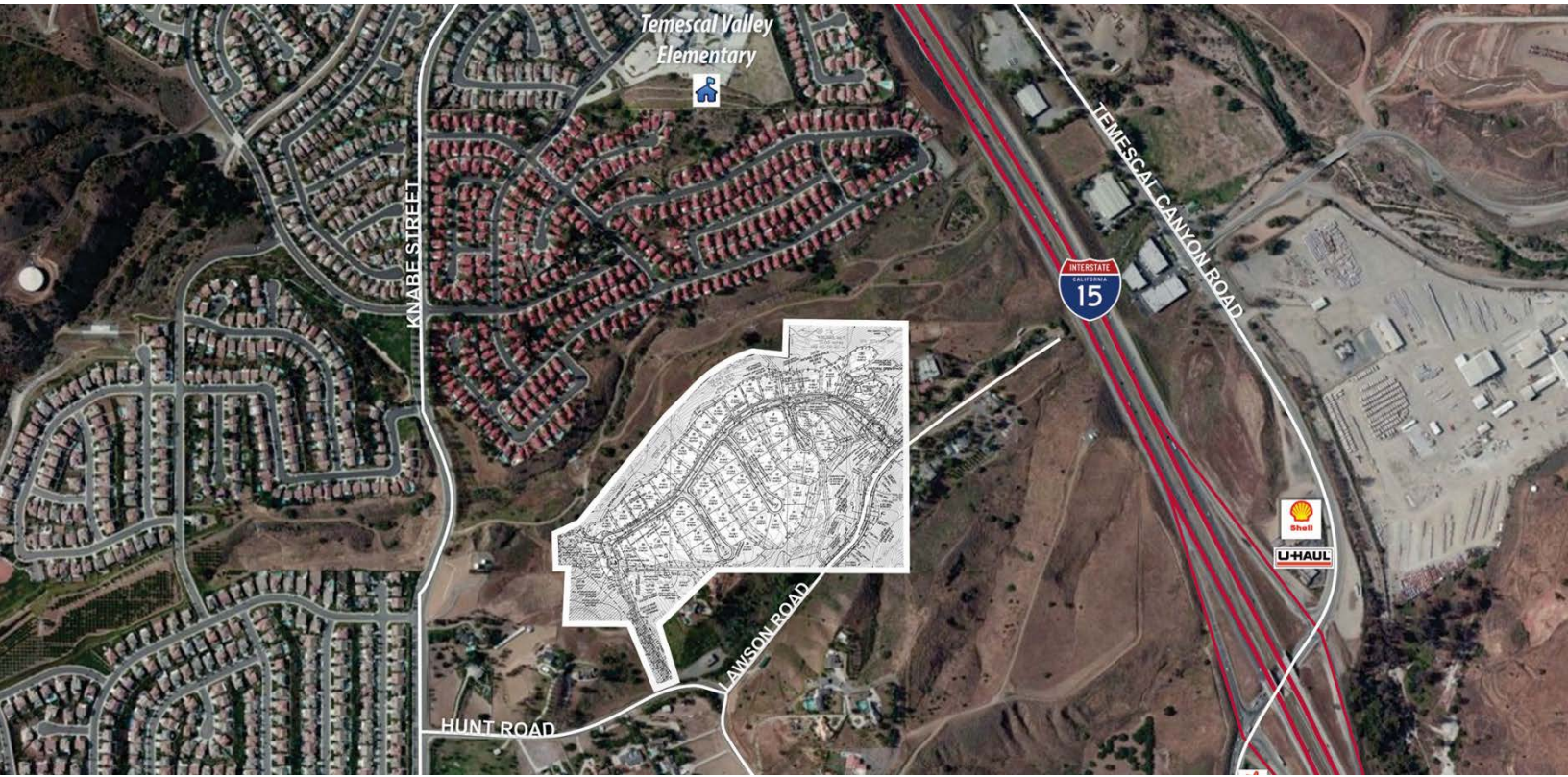


MONARCH RIDGE

Temescal Valley, CA



PROPERTY OVERVIEW

Monarch Ridge ("Property") is a ±47-acre future gated community within Temescal Valley, County of Riverside. The Property has an approved Tentative Tract Map with final engineering in process. It will be delivered grading permit-ready.

- The Property will consist of 54 single-family detached lots with a minimum lot size of 12,000 sf within a gated community.
- The Property is currently in an unimproved condition. Future homeowners will have views of the surrounding mountains and valleys.
- The Property is located southeast of the City of Corona within the unincorporated area of Temescal Valley. More specifically, the Property is located north of Lawson and Hunt Road between Knabe Street and Interstate 15.

QUICK FACTS

PROJECT SIZE	54 Lots
ENTITLEMENTS	Final engineering in process
SITE CONDITION	Unimproved
OFFERS DUE	Submit Offer



[VIEW MAP](#)



[REQUEST MORE INFO](#)

EXCLUSIVELY LISTED BY:

Brian Carricaburu | bcarricaburu@landadvisors.com | **Ian Sinderhoff** | isinderhoff@landadvisors.com
Andrew Sinderhoff | asinderhoff@landadvisors.com

100 Spectrum Center Drive, Suite 1400, Irvine, California 92618 | 949.852.8288 | www.landadvisors.com

The information contained herein is from sources deemed reliable. We have no reason to doubt its accuracy but do not guarantee it. It is the responsibility of the person reviewing this information to independently verify it. This flyer is subject to change, prior sale or complete withdrawal. CalBRE#01225173

