



BUILDING #22

85,253 SF

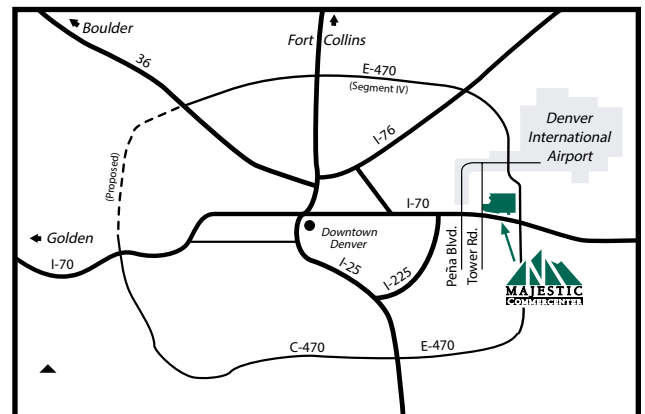
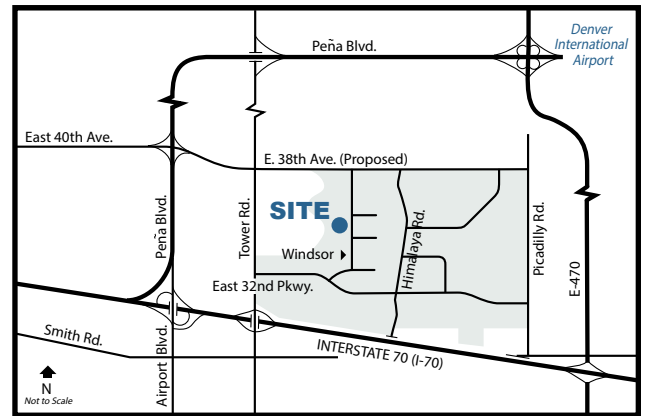
AVAILABLE FOR LEASE



3503 North Windsor Drive, Aurora, Colorado

Building Features

- Land Size:** 9.52 acres
- Building Size:** 200,000 SF
- Clearance:** 30'
- Construction:** Concrete tilt-up
- Sprinkler System:** ESFR; designed to FM specifications
- Loading:** 18 dock high doors; 18 with levelers, and 18 with dock shelters
- Office:** 2,650 Sq. Ft.
- Warehouse Lighting:** 25 Foot Candles
- Power:** 3 Phase/400 Amp/480 Volt
- Trailer Parking:** Up to 25 Spaces
- Car Parking:** 34 spaces, expandable
- Roof:** Single-ply EDM 45 mil ballasted with minimum R-125 rigid insulation board
- Skylights:** 1% of roof area
- Walls:** Insulated with R-11 from 8' above finished floor
- Floor:** 6" concrete with sealer
- Bay Spacing:** 50' x 50' bay spacing
- Other Amenities:** Front load design with trailer parking



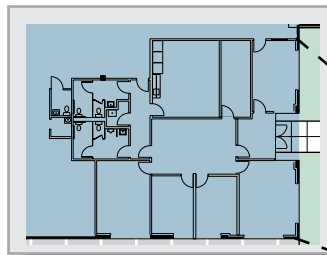
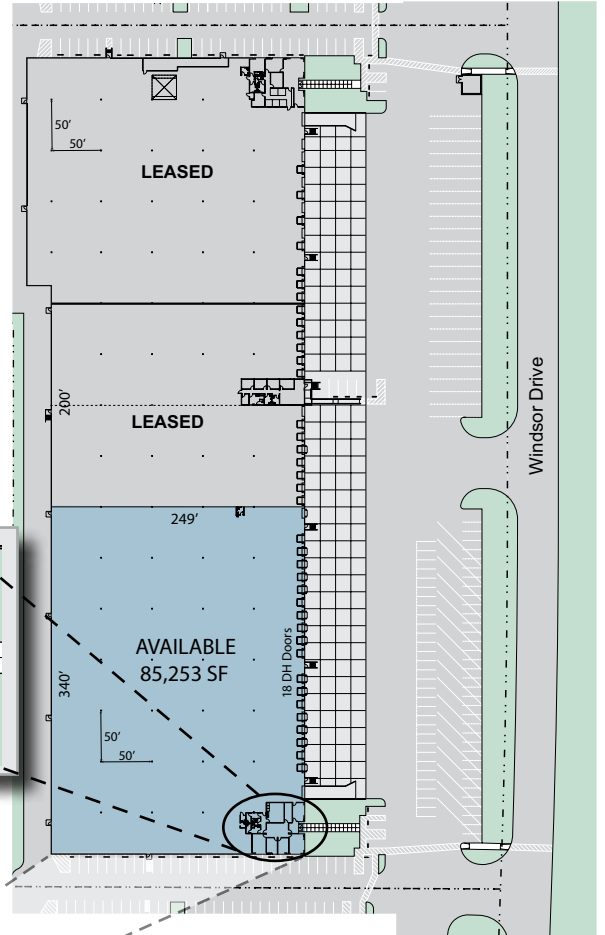
Contact Information: Randall C. Hertel
303-371-1400
rhertel@majesticrealty.com



Michael Kapoor
303-574-8903
mkapoor@majesticrealty.com

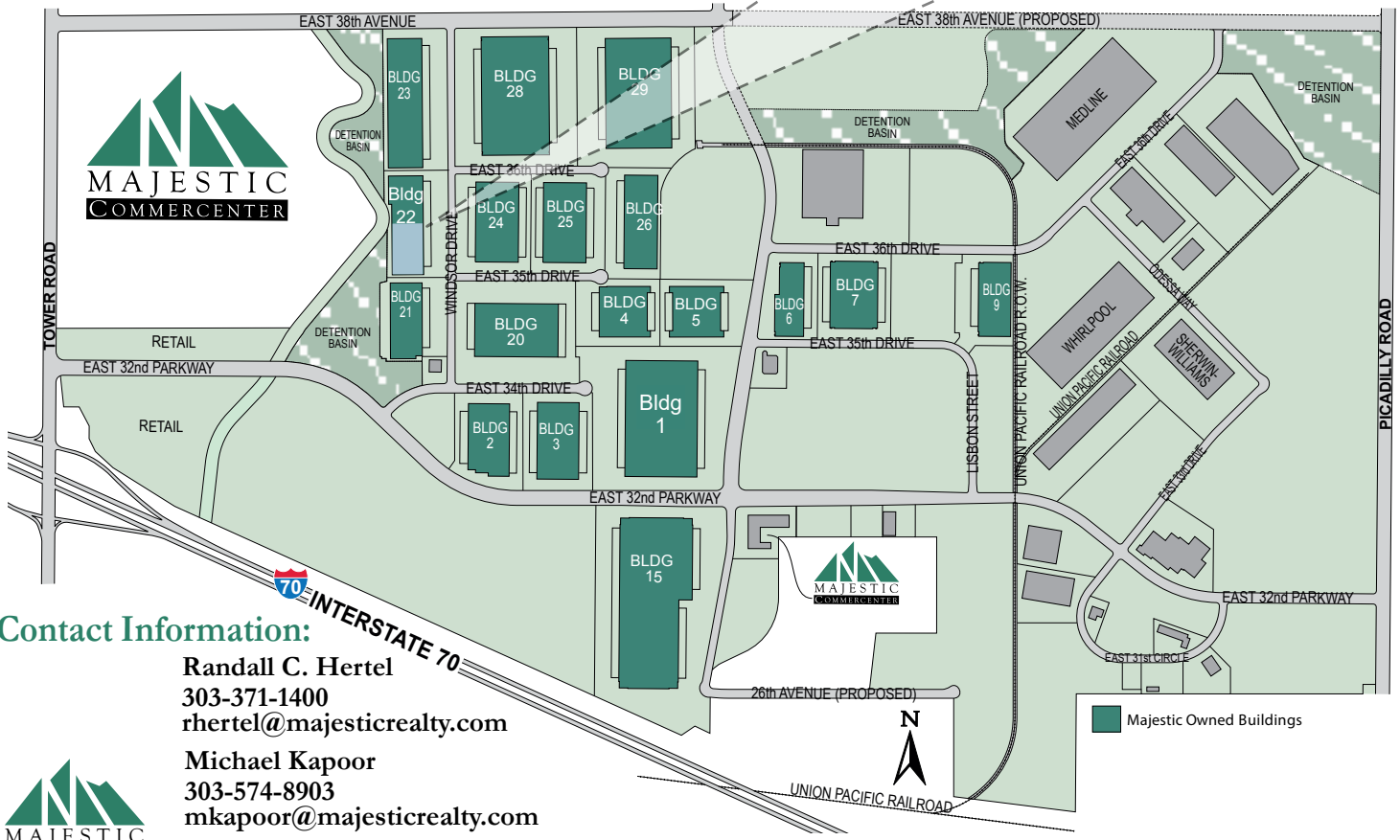


20100 E. 32nd Parkway, Suite 150, Aurora, CO 80011
Main: 303-371-1400
www.majesticrealty.com



Majestic Commercenter Features

- 1,500 Acre Master Planned Business Park
- 7.5 Million Square Feet Developed
- 20,000 to 1,000,000+ Square Feet Available
- Spec Product and Build-to-Suit
- Immediate access to I-70 at Tower Road
- I-70 and E-470 Frontage
- 5 miles South of Denver International Airport
- Adams County Enterprise Zone
- Foreign Trade Zone 293
- Xcel Energy Certified Site



Contact Information:

Randall C. Hertel
 303-371-1400
 rhertel@majesticrealty.com

Michael Kapoor
 303-574-8903
 mkapoor@majesticrealty.com
 www.MCCaurora.com

