

1706

FIFTH AVENUE

SAN DIEGO, CA 92101



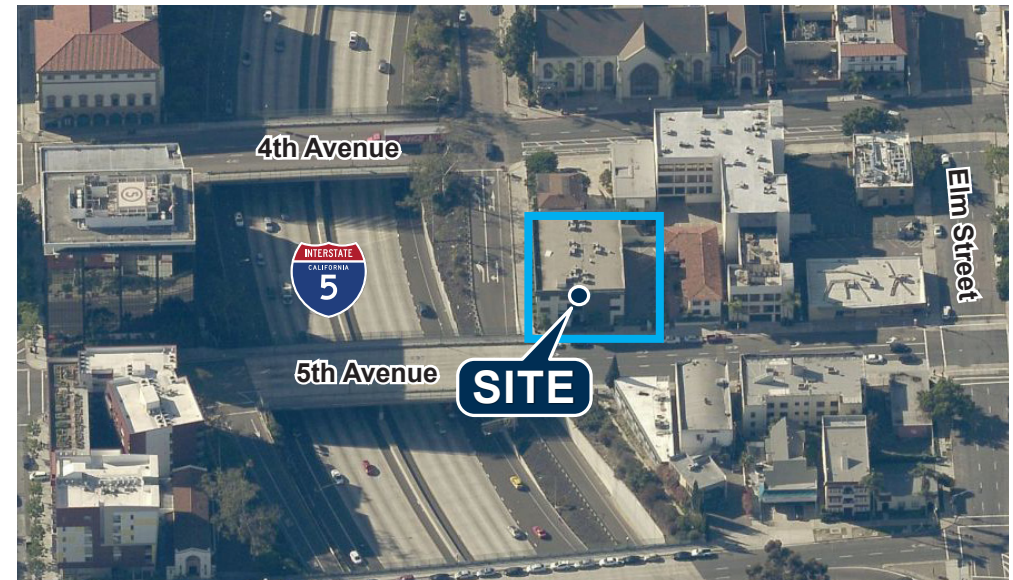
FOR LEASE | ±342 SF to ±684 SF of Office Space in Downtown

ASKING RATE:

- » \$1.70 + Electricity PSF/mo.

PROJECT FEATURES:

- » Premiere Downtown location
- » Excellent freeway access
- » Close proximity to public transportation
 - » Amtrak, Coaster, Trolley & Bus Stations within walking distance
- » Extensive retail amenities in area
- » Ideal for offices/classroom use
- » Parking can be available
- » Variety of office sizes available
- » Shared break area facilities



GARRETT FENA | 858.458.3318 | gfena@voitco.com | Lic. #01919122

GREG KIPNIS | 858.458.3301 | gkipnis@voitco.com | Lic. #01991789

4180 La Jolla Village Dr., Suite 100, San Diego, CA 92037 • 858.453.0505 • 858.408.3976 Fax • Lic #01991785 | www.voitco.com

Voit

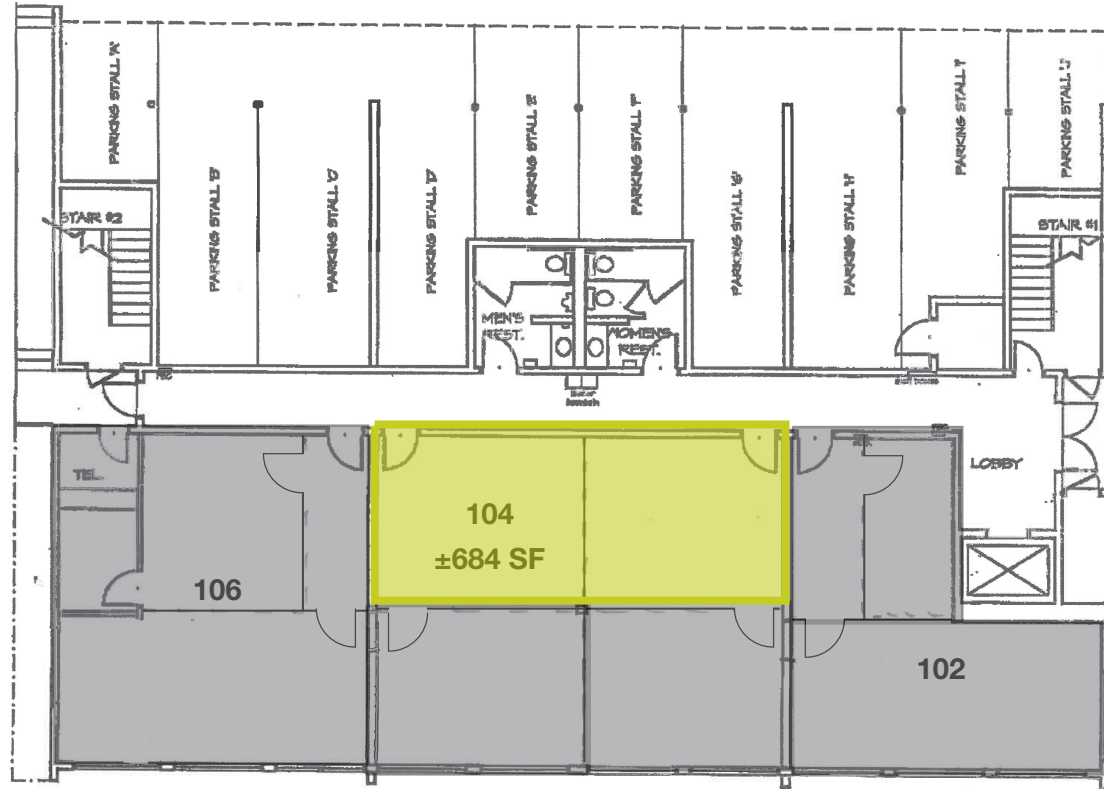
REAL ESTATE SERVICES

1706
FIFTH AVENUE
 SAN DIEGO, CA 92101

FOR LEASE

±342 SF to ±684 SF of Office Space in Downtown

FIRST FLOOR AVAILABILITY



SUITE #	SIZE	RATE/SF	COMMENTS
104*	±684 SF	\$1.70 + Electricity	3 offices / classrooms
*Can be divided from ±342 SF to ±684 SF			

GARRETT FENA | 858.458.3318 | gfena@voitco.com | Lic. #01919122

GREG KIPNIS | 858.458.3301 | gkipnis@voitco.com | Lic. #01991789

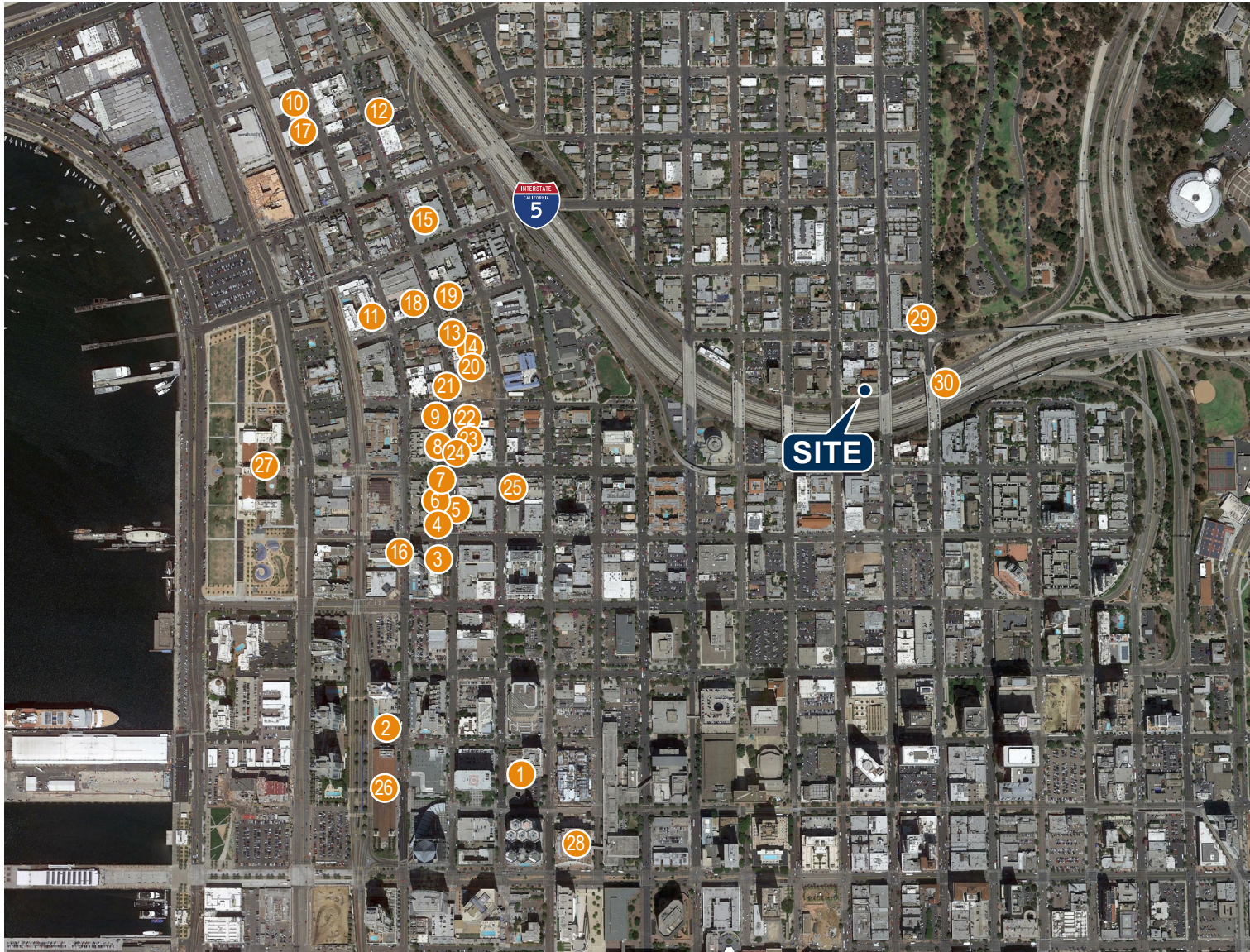
Voit
 REAL ESTATE SERVICES

1706

FIFTH AVENUE
SAN DIEGO, CA 92101

FOR LEASE

±342 SF to ±684 SF of Office Space in Downtown



1	Karl Strauss
2	Stone Brewing
3	Craft & Commerce
4	Harbor Cafe
5	Isola Pizza Bar
6	Salon Tonic
7	Indigo Grill
8	Ironside Oyster
9	Prep Kitchen
10	The Crack Shack
11	Underbelly
12	Ballast Point
13	Landini's
14	Filippi's
15	Mona Lisa
16	Bracero
17	Juniper Ivy
18	Bencotto
19	Zias Bistro
20	Cafe Zuccherò
21	NA Pizza
22	Princess Pub & Grill
23	Davanti Enoteca
24	Burger Lounge
25	Queenstown Public House
26	Santa Fe Depot
27	County Administration Building
28	County & Federal Courts
29	Horton Plaza
30	Gaslamp District