



West Seattle Space for Lease

This large, 4,968sf lot is located on Delridge Way in West Seattle. It features ample yard space, alley access on SW Brandon St., and a standalone building that is approximately 672 ft². The building floor plan features two offices, a restroom, waiting area and rear exit. The property boasts exceptional visibility on Delridge Way in and is ideal for office, retail and/or yard space.

Overview

- Large, fenced lot with ample yard space
- Alley access on SW Brandon St.
- Office space: 672sf
- 2 private offices, restroom, washer/dryer
- Frontage and excellent visibility on Delridge
- Total Lot Size: 4,968sf
- Asking Rent: \$4,200/mo NNN

DISCLAIMER: The above information has been secured from sources believed to be reliable, however, no representations are made to its accuracy. Prospective tenants or buyers should consult their professional advisors and conduct their own independent investigation. Properties are subject to change in price and/or availability without notice.





EXTERIOR PHOTOS



INTERIOR PHOTOS



Timothy Johnson

timothy@johnson-commercial.com
O: (253) 589-9999 C: (253) 209-9999

Margot Johnson

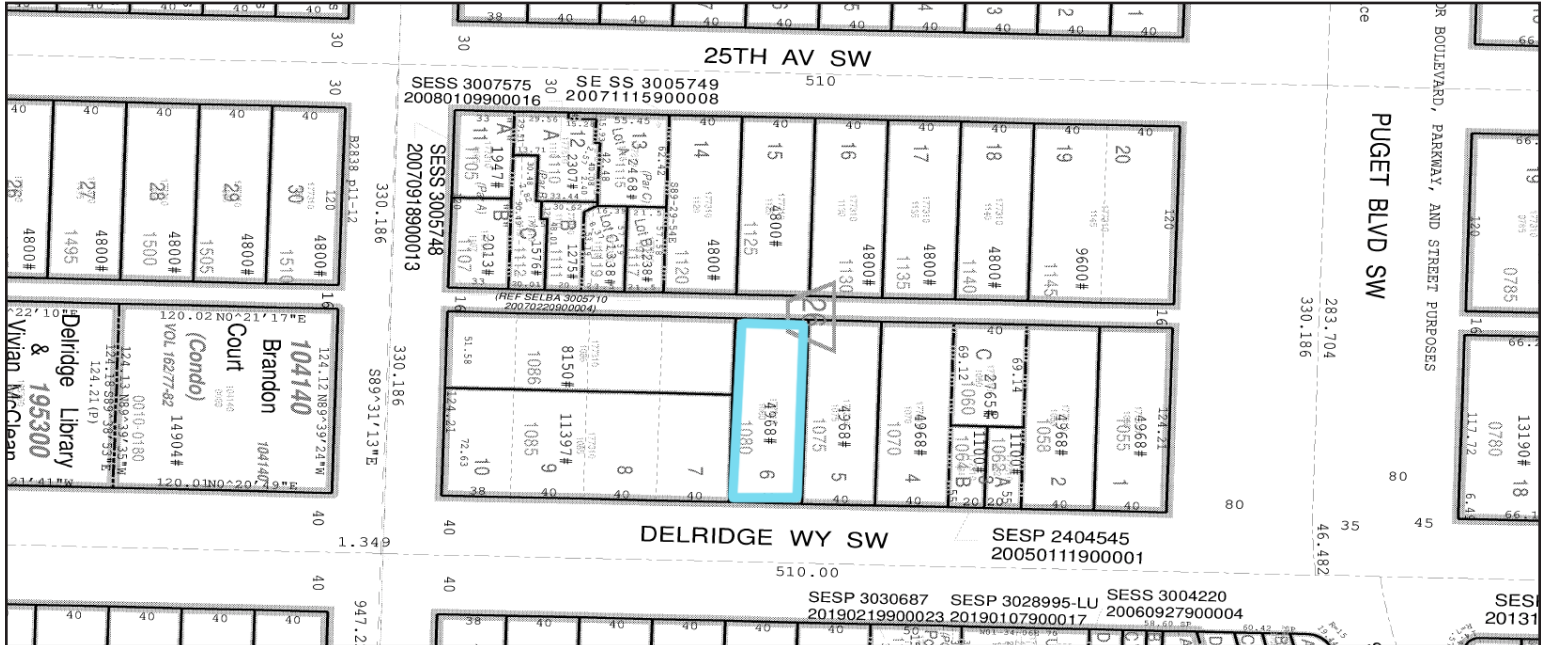
margot@johnson-commercial.com
O: (253) 589-9999 C: (253) 209-9998

Andrea Anderson

andrea@johnson-commercial.com
O: (253) 589-9999 C: (253) 444-7801



PARCEL MAP



NEIGHBORHOOD MAP



<p>Timothy Johnson timothy@johnson-commercial.com O: (253) 589-9999 C: (253) 209-9999</p>	<p>Margot Johnson margot@johnson-commercial.com O: (253) 589-9999 C: (253) 209-9999</p>	<p>Andrea Anderson andrea@johnson-commercial.com O: (253) 589-9999 C: (253) 444-7801</p>
--	--	---