

20813 - 20883 STEVENS CREEK BOULEVARD

STEVENS CREEK OFFICE CENTER

CUPERTINO, CA

- Direct Suite Access From Courtyard
- No Interior Common Hallways or Elevators
- Market Ready Suites - Available Immediately



±845 - ±3,161 SF AVAILABLE FOR LEASE

3055 Olin Avenue, Suite 2200, San Jose, CA 95128
O 408.727.9600 F 408.988.6340
www.nmrk.com

NEWMARK

Anne Ralston
408.982.8466
aralston@ngkf.com
Lic #00957374

Patty Steele
408.982.8463
psteele@ngkf.com
Lic #00839635

20813 - 20883 STEVENS CREEK BOULEVARD

STEVENS CREEK OFFICE CENTER

CUPERTINO, CA

Property Highlights



Twelve-building professional office complex with various spaces for lease



One and two-story buildings with great expansion capabilities



Prime location with easy access to FWY 280 and HWY 85



On-site gym with showers



On-site management



Comcast and AT&T internet



Ample parking including two underground parking garages: 3.6/1,000



EVgo charging stations on site



Just steps away from Whole Foods, Panera Bread and more!



Walking distance to other retail and dining amenities

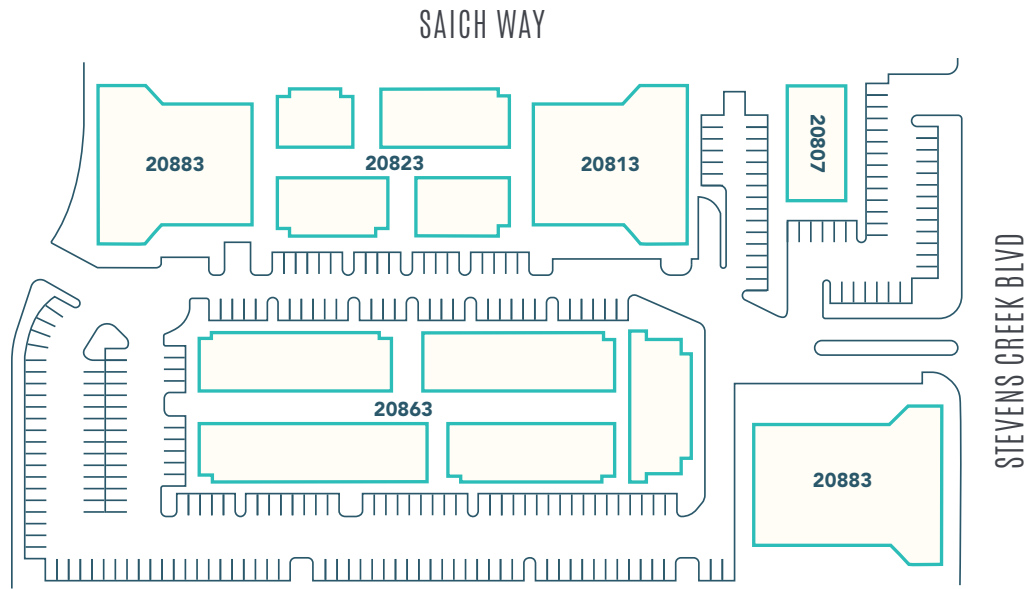


20813 - 20883 STEVENS CREEK BOULEVARD

STEVENS CREEK OFFICE CENTER

CUPERTINO, CA

Site Map



Fitness Center



ASBV Lockbox



20813 - 20883 STEVENS CREEK BOULEVARD

STEVENS CREEK OFFICE CENTER

CUPERTINO, CA

Amenities Gallery



20813 - 20883 STEVENS CREEK BOULEVARD

STEVENS CREEK OFFICE CENTER

CUPERTINO, CA

Suite 560 - 845 RSF



Available 3/1/2021

Exterior View



Courtyard View

20813 - 20883 STEVENS CREEK BOULEVARD

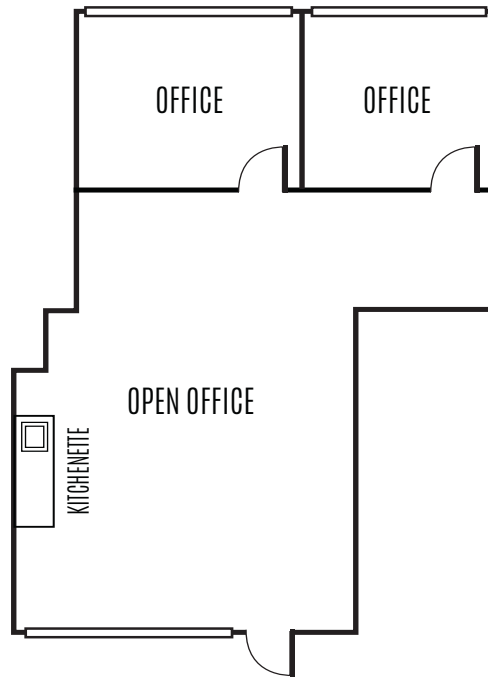
STEVENS CREEK OFFICE CENTER

CUPERTINO, CA

Suite 260 - 1,300 RSF

Market Ready

Exterior View



Courtyard View



20813 - 20883 STEVENS CREEK BOULEVARD

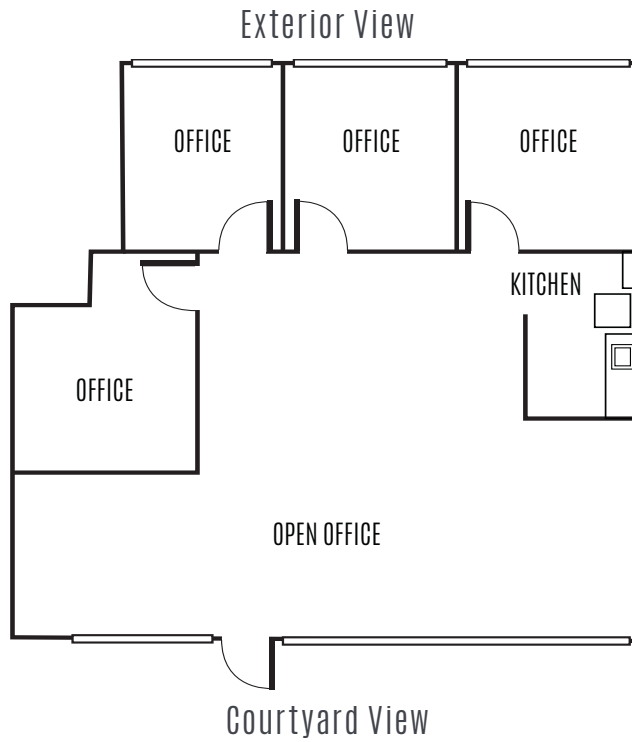
STEVENS CREEK OFFICE CENTER

CUPERTINO, CA

Suite 540 - 1,841 RSF



Market Ready



20813 - 20883 STEVENS CREEK BOULEVARD

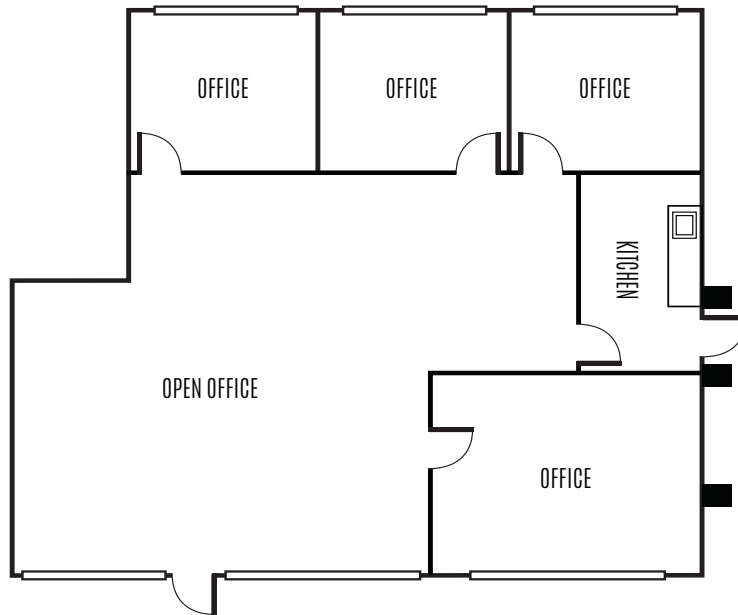
STEVENS CREEK OFFICE CENTER

CUPERTINO, CA

Suite 275 - 1,861 RSF

Market Ready

Exterior View



Courtyard View



20813 - 20883 STEVENS CREEK BOULEVARD

STEVENS CREEK OFFICE CENTER

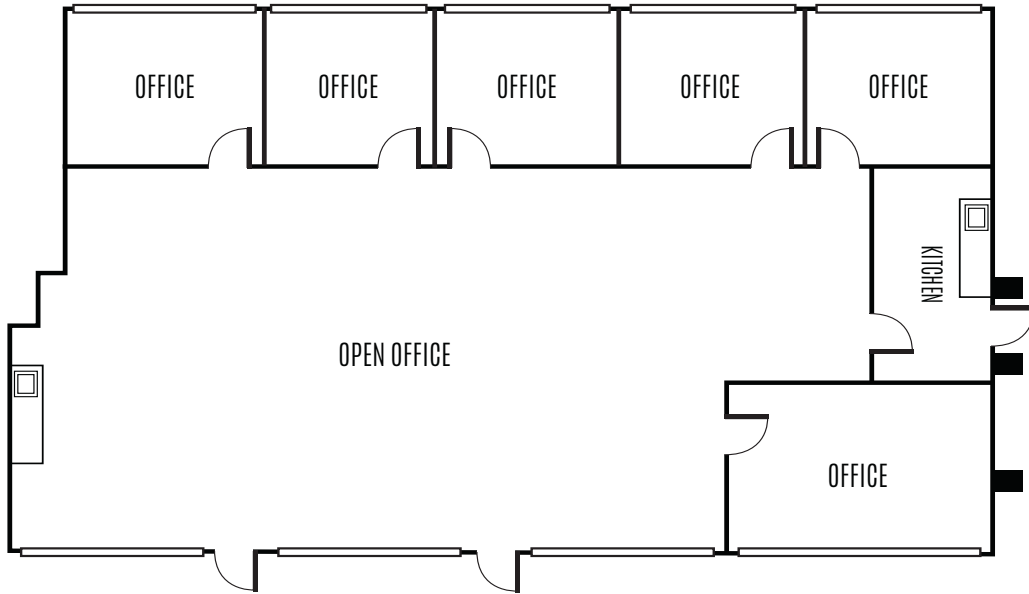
CUPERTINO, CA

Suite 260 & 275 - 3,161 RSF



Market Ready

Exterior View



Courtyard View

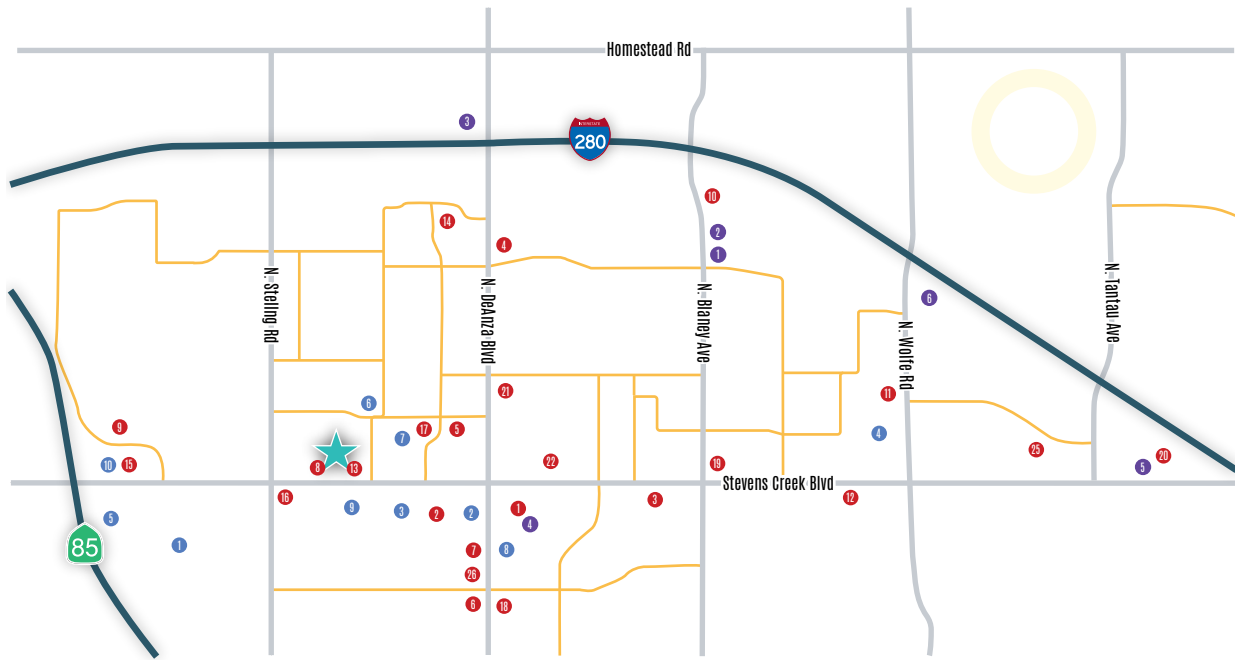


20813 - 20883 STEVENS CREEK BOULEVARD

STEVENS CREEK OFFICE CENTER

CUPERTINO, CA

Amenities Map



● RESTAURANTS/ GROCERY STORES

- 1 Le Boulangér
- 2 Parkview Restaurant
- 3 Starbucks Coffee
- 4 Dish N' Dash
- 5 The Counter
- 6 Gyu-Kaku
- 7 BJ's Restaurant
- 8 Mandarin Gourmet
- 9 Chipotle
- 10 Galpao Gacho
- 11 Sushi Kuni
- 12 Subway Sandwiches
- 13 Whole Foods
- 14 Enzo's Italian

- 15 Joy Luck Place
- 16 Korea Tofu House
- 17 Fantasia Coffee
- 18 Curry Pizza
- 19 Benihana
- 20 Alexander's
- 21 Eureka!
- 22 Stein's Beer Garden
- 23 House of Falafel
- 24 Lazy Dog
- 25 Olarn Thai Cuisine
- 1 Harumi Sushi
- 2 La Patisserie
- 3 Erik's Deli Cafe
- 4 Yogurtland
- 5 Legend's Pizza

- 6 Panera Bread
- 7 Peet's Coffee
- 8 Sizzling Lunch
- 9 Outback Steakhouse
- 10 Bagel Street Cafe
- 11 Round Table Pizza
- 12 Hobee's Restaurant
- 13 Jamba Juice
- 14 J&J Hawaiian BBQ
- 15 Ike's Sandwiches
- 16 Marina Foods
- 17 Aqui
- 18 Starbucks
- 19 Trader Joe's
- 20 Holder's Country Inn
- 21 Arya Global Cuisine

- 22 IHOP
- 23 Donut Wheel
- 24 Lee's Sandwiches
- 25 Café Torre
- Amami Sushi
- Red Hot Wok
- Rootstock Wine Bar

● HOTELS

- 1 Courtyard Cupertino
- 2 Hilton Garden Inn
- 3 Cupertino Inn
- 4 Juniper Hotel
- 5 Aloft
- 6 Hyatt House

● AMENITIES

- 1 DeAnza College
- 2 FedEx Kinko's
- 3 TJ Max Home Goods
- 4 Bay Club
- AMC Theaters
- Bowlmor Lanes
- Ice Rink
- 5 Flint Center
- 6 YMCA
- 7 Target
- 8 CVS
- 9 Staples
- 24 Fitness Express

The distributor of this communication is performing acts for which a real estate license is required. The information contained herein has been obtained from sources deemed reliable but has not been verified and no guarantee, warranty or representation, either express or implied, is made with respect to such information. Terms of sale or lease and availability are subject to change or withdrawal without notice. 09-0371 - 11/20

NEWMARK

Anne Ralston
408.982.8466
aralston@ngkf.com
Lic #00957374

Patty Steele
408.982.8463
psteele@ngkf.com
Lic #00839635