

FOR LEASE

PROFESSIONAL OFFICE SPACE

1967 N Gateway Blvd Suite 102, Fresno, CA 93727



OFFERING SUMMARY

Available SF:	1,166 SF
Lease Rate:	\$1.39 SF/month
Lease Type:	Modified Gross Base Year

PROPERTY OVERVIEW

TWO MONTHS FREE RENT AVAILABLE

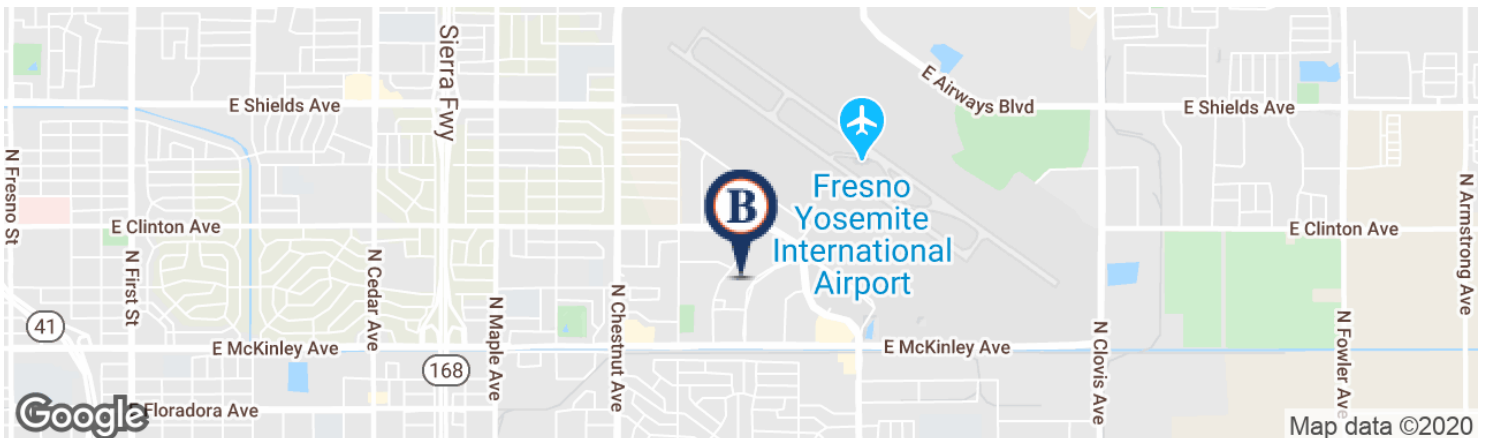
Great professional small office for under 10 employees. Peaceful office park with no distractions, ample parking, and quiet neighboring tenants.

Unit offers 3 private offices and 1 larger break or conference room, kitchenette, interior private restroom, plenty of natural light and high-end finishes. Unit is equip with CAT6 cabling and abundant ethernet/POE ports. Janitorial 5 days a week is included in the lease rate.

Full furnishings & equipment available separately- inquire for details.

LOCATION OVERVIEW

The property is located on N Gateway Blvd, just North of E McKinley Avenue. The location is within one-half mile of Fresno Yosemite International Airport. Property offers convenient access to the 41, 180 & 99 Freeways. With its close proximity to the city's airport and core business district, the complex is an ideal location for local businesses, regional groups and national companies. Churrasco Grill Restaurant on-site.



BOESE COMMERCIAL

BOESECOMMERCIAL.COM | FRESNO | LOS ANGELES |
PLEASANTON | SACRAMENTO | SAN DIEGO | SAN FRANCISCO

ROB BOESE, SIOR

President/Broker
559-573-8438
CalDRE #01922740
Rob@boesecommercial.com

For More Information:

ERIN VOLPP

General Manager
559-573-8439
CalDRE #01966093
erin@boesecommercial.com

FOR LEASE

PROFESSIONAL OFFICE SPACE

1967 N Gateway Blvd Suite 102, Fresno, CA 93727



BOESE COMMERCIAL

BOESECOMMERCIAL.COM | FRESNO | LOS ANGELES | PLEASANTON | SACRAMENTO | SAN DIEGO | SAN FRANCISCO

ROB BOESE, SIOR

President/Broker
559-573-8438

CalDRE #01922740

Rob@boesecommercial.com

For More Information:

ERIN VOLPP

General Manager
559-573-8439

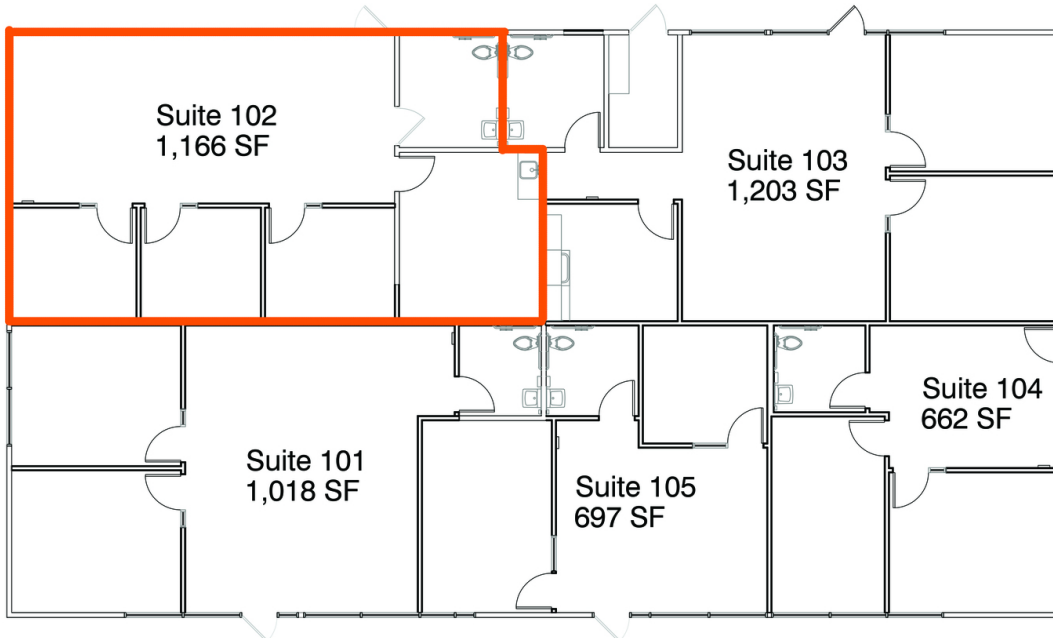
CalDRE #01966093

erin@boesecommercial.com

FOR LEASE

PROFESSIONAL OFFICE SPACE

1967 N Gateway Blvd Suite 102, Fresno, CA 93727



Fresno Airport | 1967 Building | Suite 102

1901-1991 N. Gateway Blvd., Fresno, CA 93727

1,166 SF

BOESE COMMERCIAL

BOESECOMMERCIAL.COM | FRESNO | LOS ANGELES | PLEASANTON | SACRAMENTO | SAN DIEGO | SAN FRANCISCO

ROB BOESE, SIOR

President/Broker
559-573-8438

CalDRE #01922740

Rob@boesecommercial.com

For More Information:

ERIN VOLPP

General Manager
559-573-8439

CalDRE #01966093

erin@boesecommercial.com