

OFFICE FOR LEASE

PROFESSIONAL SPACE IN DOWNTOWN NORFOLK

248 W. Bute Street



- Professional Space in the desirable Freemason Area of Downtown Norfolk
- 3,155 SF - Ground Floor
- Free parking available on site
- Exterior Signage Available
- Light Rail Access and Visibility
- Owner on premises provides outstanding and responsive property management
- **Lease Rate: \$18.00/SF, Net Janitorial**



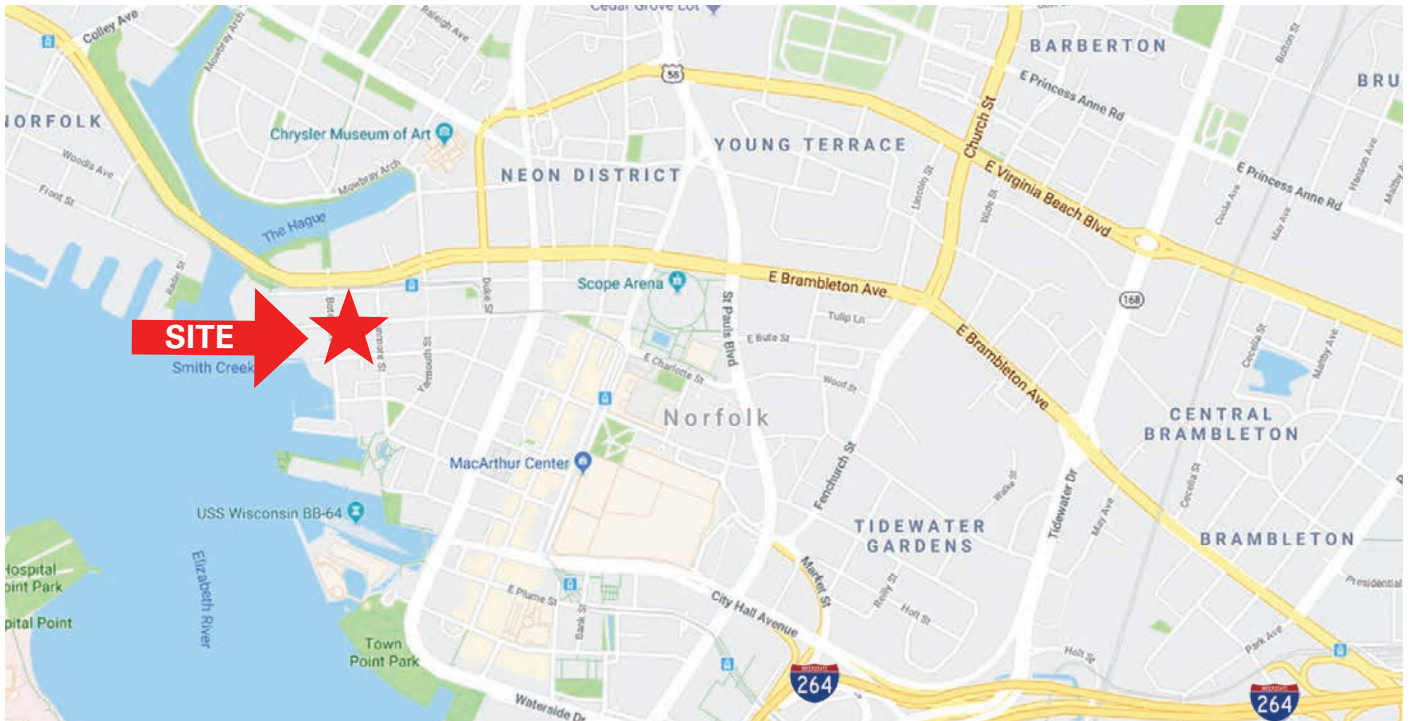
CONTACT: _____

RYAN KING
(757) 640-8210
ryanking@harveylindsay.com

HARVEY LINDSAY
COMMERCIAL REAL ESTATE

A Tradition of Forward Thinking

OFFICE FOR LEASE - PROFESSIONAL SPACE IN DOWNTOWN NORFOLK - 248 W. BUTE STREET



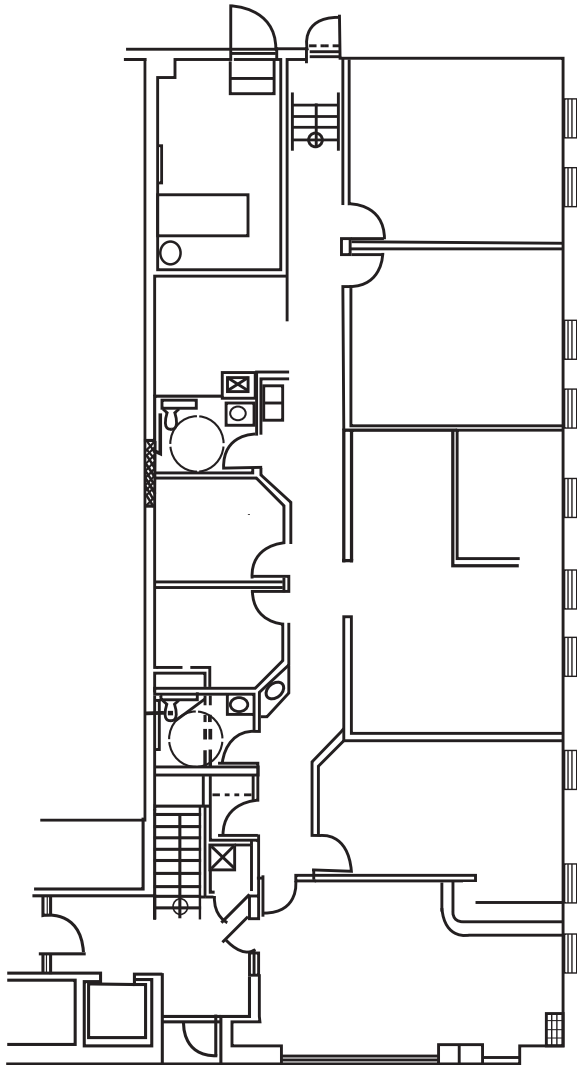
CONTACT:

RYAN KING
(757) 640-8210
ryanking@harveylindsay.com

HARVEY LINDSAY
COMMERCIAL REAL ESTATE
A Tradition of Forward Thinking

The information contained herein has been obtained from sources believed to be reliable but is not warranted.
We cannot be responsible for errors, omissions, withdrawal, or prior lease or sale.

OFFICE FOR LEASE - PROFESSIONAL SPACE IN DOWNTOWN NORFOLK - 248 W. BUTE STREET



Bute Street



CONTACT:

RYAN KING

(757) 640-8210

ryanking@harveylindsay.com

HARVEY LINDSAY

COMMERCIAL REAL ESTATE

A Tradition of Forward Thinking

The information contained herein has been obtained from sources believed to be reliable but is not warranted.
We cannot be responsible for errors, omissions, withdrawal, or prior lease or sale.