

# OFFICE/MEDICAL FOR LEASE

Available SF: ±1,830 - 5,300



## PROPERTY OVERVIEW

Sub Market: Hillcrest/Uptown

## BUILDING DATA

Total Building SF: ±23,350

## AVAILABILITIES

Suite 108: ±1,830 RSF Ground Floor Medical Office or Medical Office Central Suite with Private Entrance from street

Entire 2<sup>nd</sup> Floor: ±5,300 RSF Office Space

3rd Floor Suite: ±5,000 RSF Fully Built Out Medical Suite, Forster Office Suite, Bay Views

Available: Now

## ECONOMIC DATA

Lease Rate: \$2.25 + Electrical & Janitorial

- Office/Medical/Dental Building for Lease
- Outstanding Fifth Avenue location, close to Hospitals, Restaurants and Balboa Park
- Immediate occupancy available

**FIFTH & PALM BUILDING**  
2918 Fifth Avenue | San Diego, CA 92103

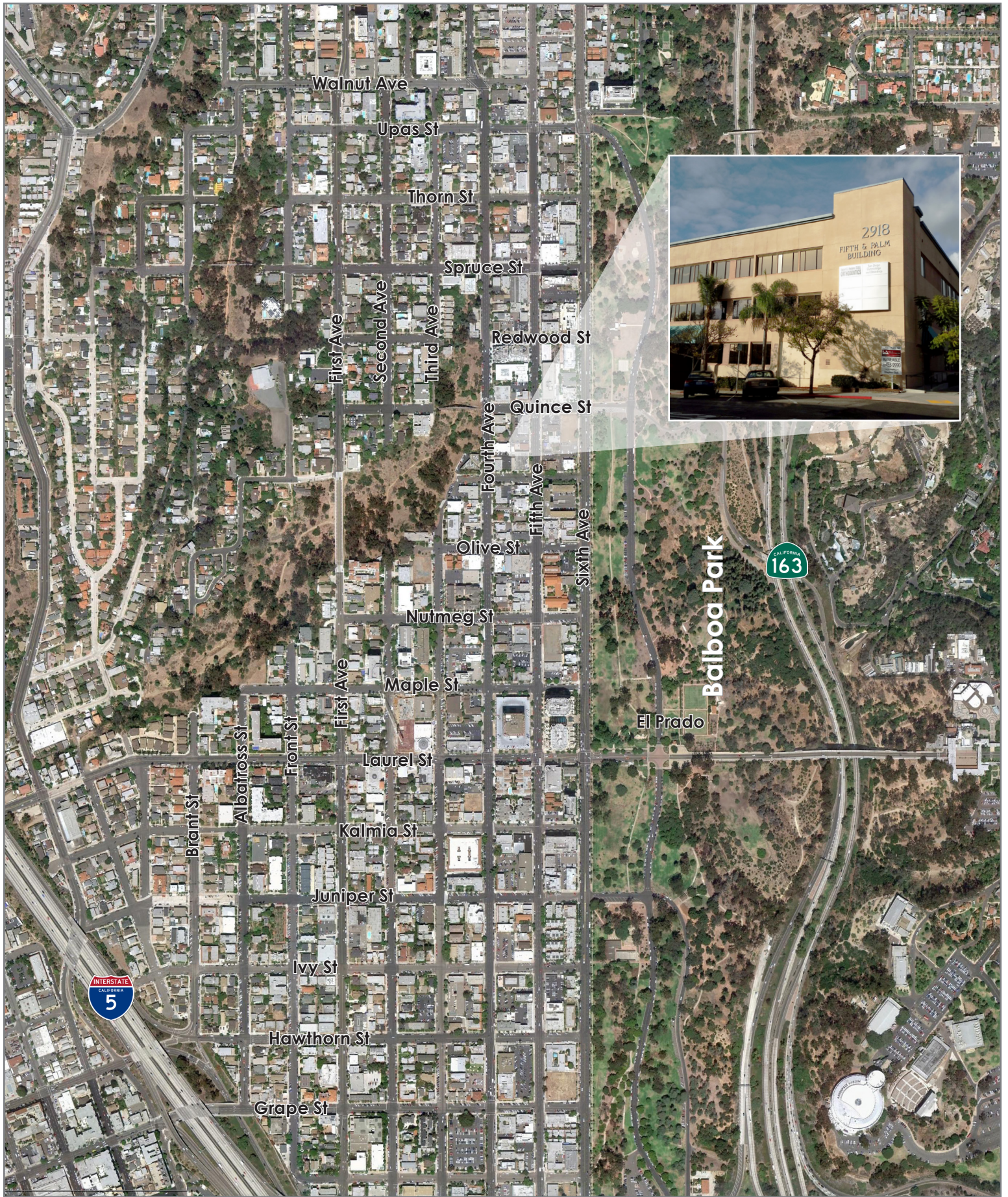
For more information contact:

STEPHEN DOK | Vice President  
Healthcare Practice Group  
sdok@lee-associates.com  
D 858.713.9314 | Lic No. 01019216

lee-associates.com







For more information contact:

STEPHEN DOK | Vice President  
 Healthcare Practice Group  
 sdk@lee-associates.com  
 D 858.713.9314 | Lic No. 01019216

lee-associates.com

