



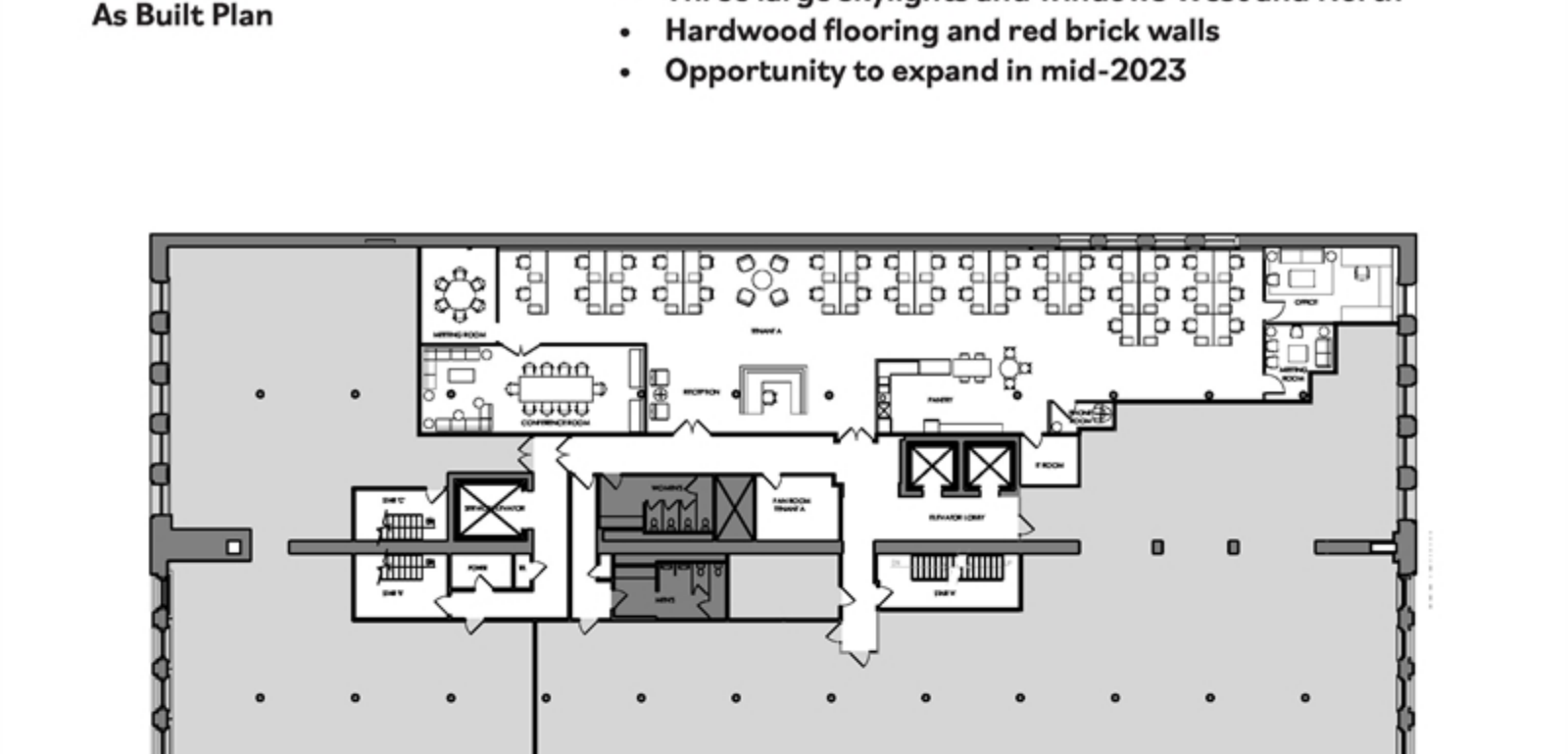
575 BROADWAY

THE HEART OF SOHO

Suites of 7,000 RSF - 21,140 RSF

**Two full floors can be made available - 50,700 RSF*

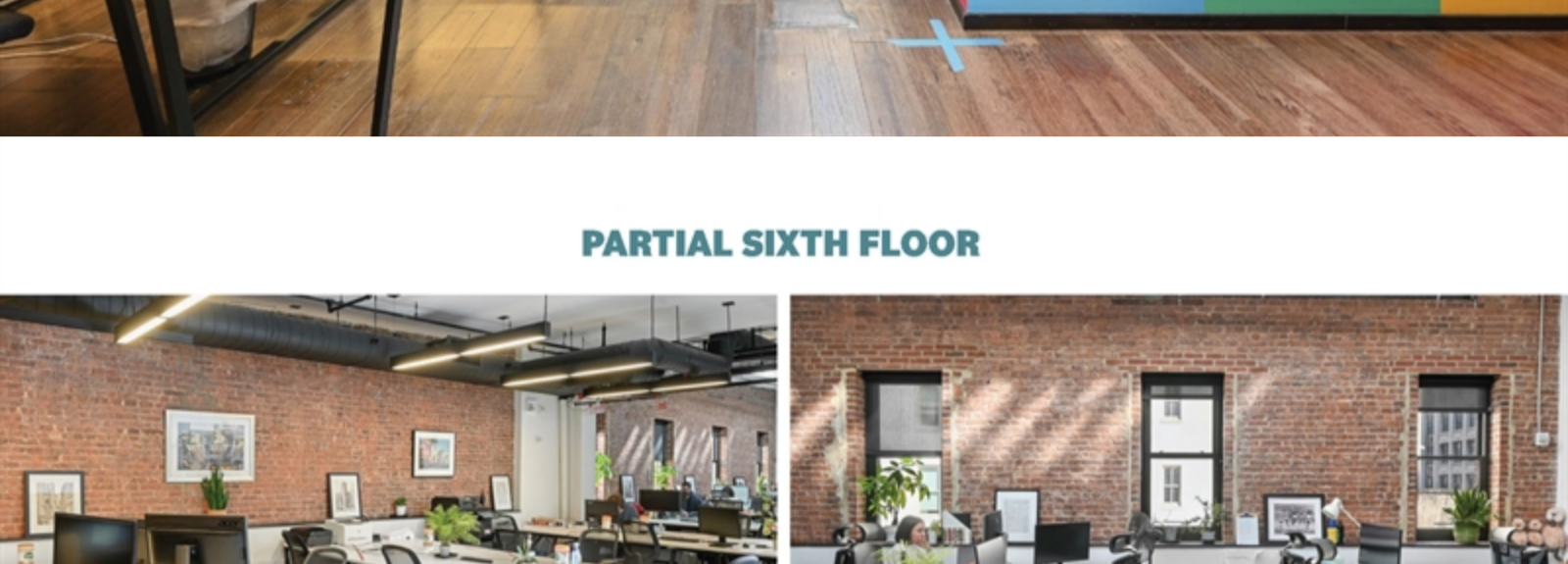
NEWMARK



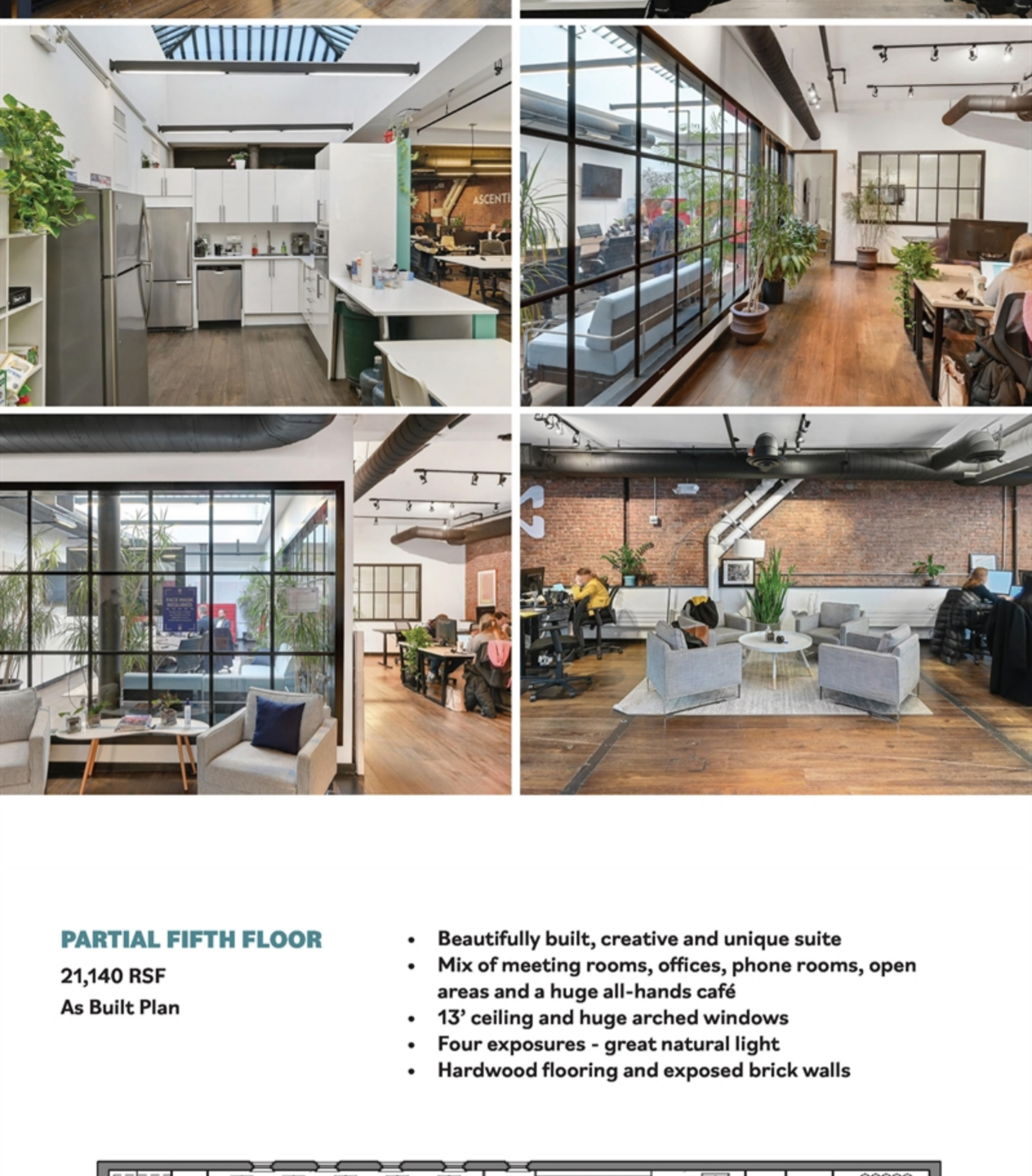
PARTIAL SIXTH FLOOR

7,000 RSF
As Built Plan

- Built, creative suite - mix of meeting rooms/offices and open area
- Three large skylights and windows West and North
- Hardwood flooring and red brick walls
- Opportunity to expand in mid-2023



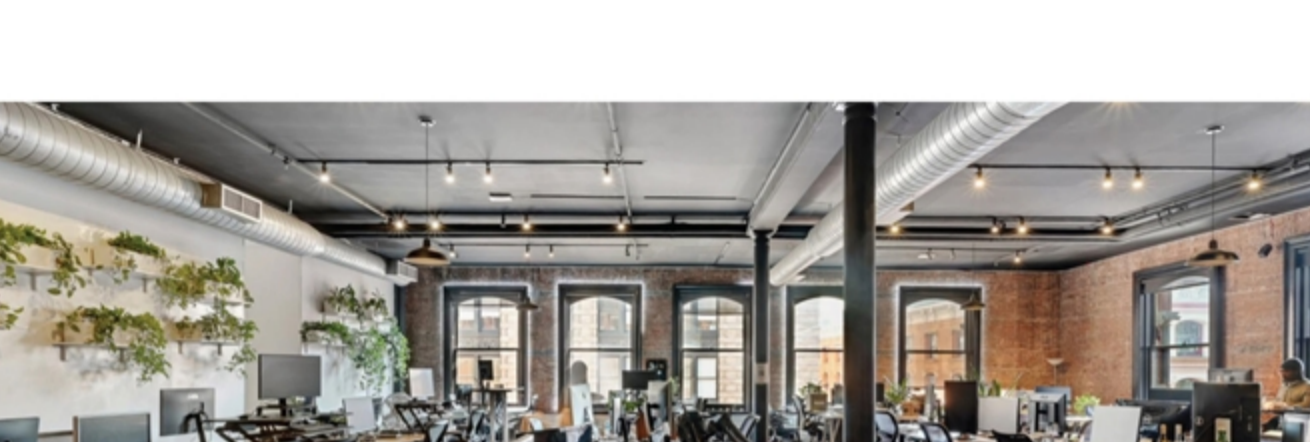
PARTIAL SIXTH FLOOR



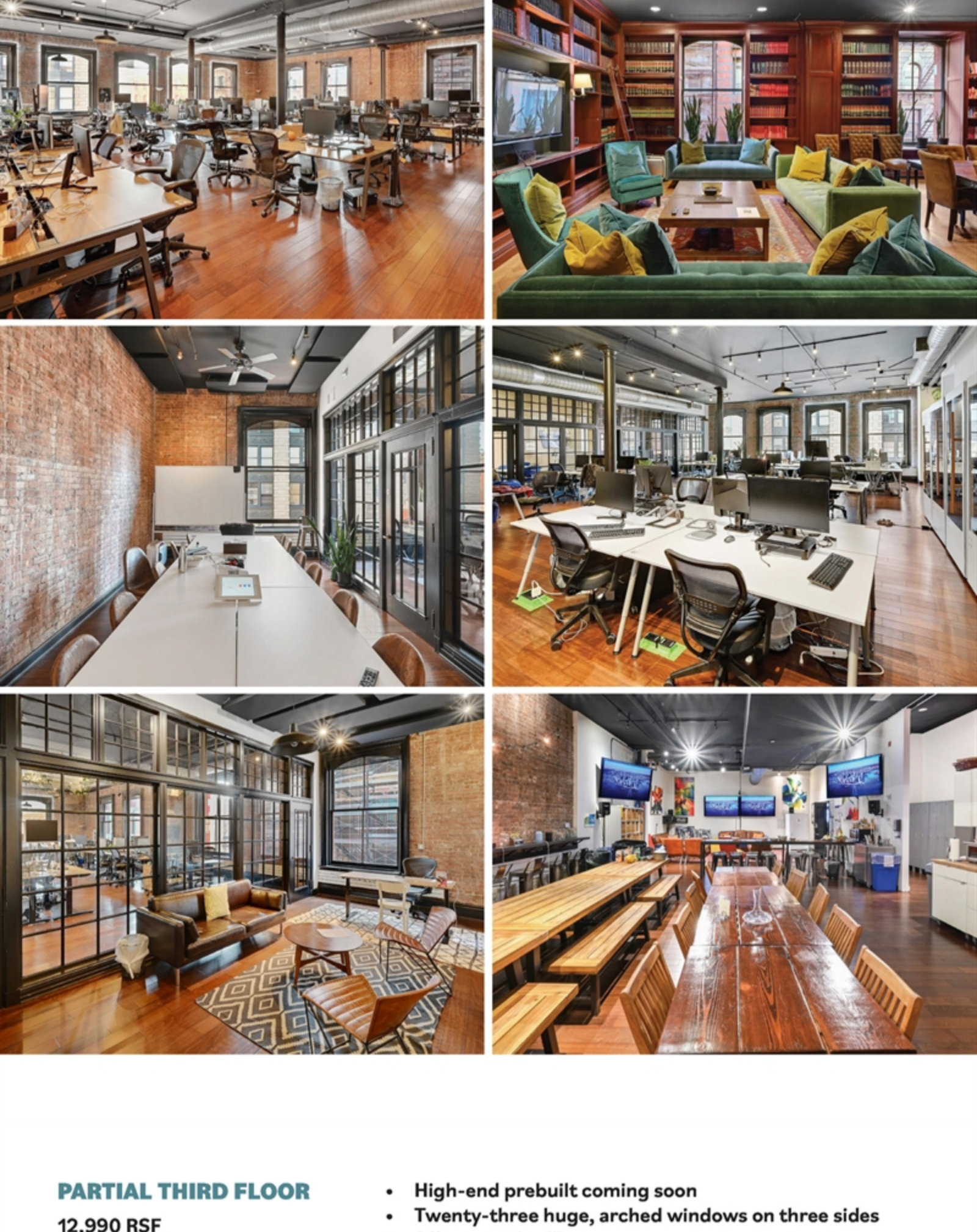
PARTIAL FIFTH FLOOR

21,140 RSF
As Built Plan

- Beautifully built, creative and unique suite
- Mix of meeting rooms, offices, phone rooms, open areas and a huge all-hands café
- 13' ceiling and huge arched windows
- Four exposures - great natural light
- Hardwood flooring and exposed brick walls



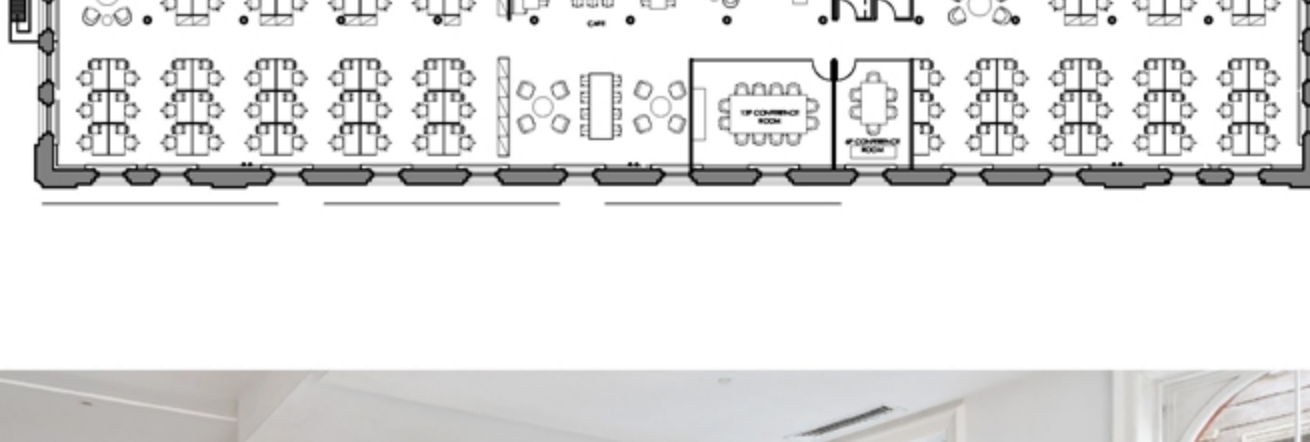
PARTIAL FIFTH FLOOR



PARTIAL THIRD FLOOR

12,990 RSF
Prebuilt Plan

- High-end prebuilt coming soon
- Twenty-three huge, arched windows on three sides
- 14' exposed ceiling
- Tremendous natural light
- Hardwood flooring
- Private restrooms with showers



PARTIAL THIRD FLOOR



NEIGHBORHOOD



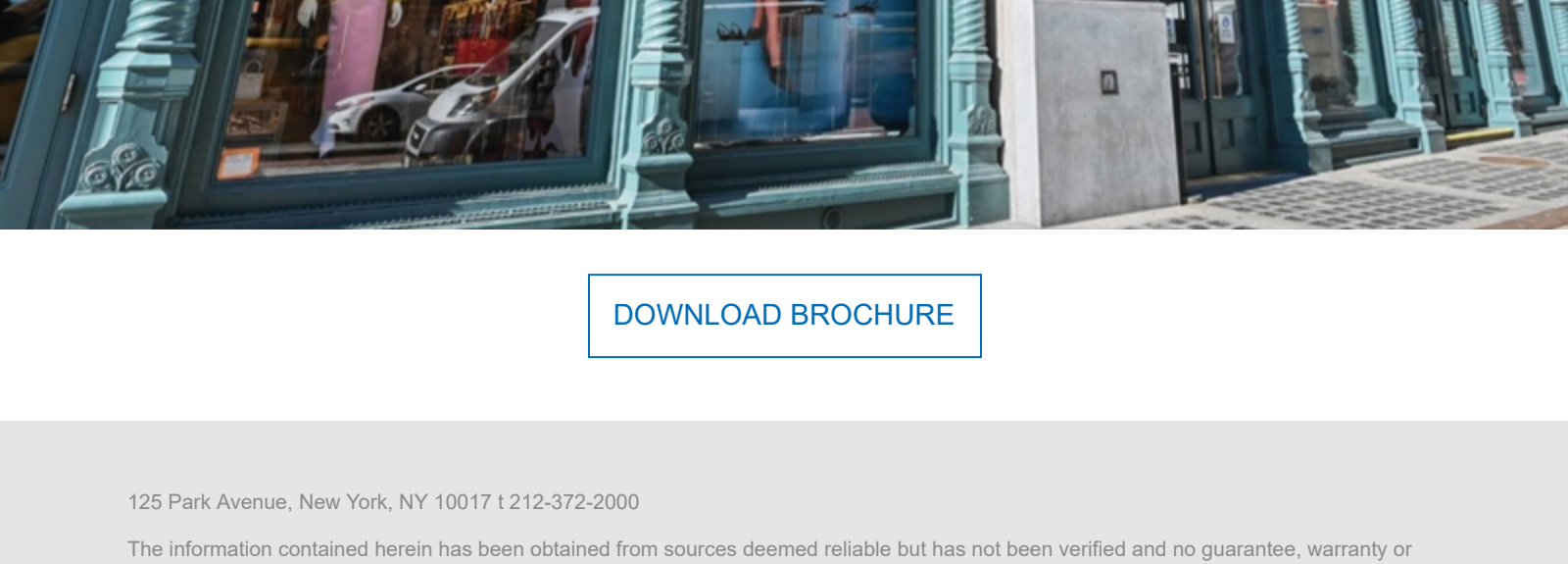
575 BROADWAY

ROB SILVER
robert.silver@nmrk.com
t 212-372-2005

SCOTT BROWN
scott.brown@nmrk.com
t 212-372-2417

ANTHONY SCIACCA
anthony.sciacca@nmrk.com
t 212-372-2086

NEWMARK



[DOWNLOAD BROCHURE](#)