

FOR SALE / LEASE – MANY POSSIBLE USES



VIEW
INSIDE

26100 NORTHWESTERN HIGHWAY | SOUTHFIELD, MI

PROPERTY FEATURES

- 8,181 square feet available for sale or lease
- Situated on 2.4 acres
- Ideal for many possible uses including Office, Retail, Banquet/Meeting Facility, Senior Care, and General Commercial
- Zoned RC, Regional Center
- Beautiful outdoor area with picturesque views
- Prime location in Southfield with immediate access to I-696, Lodge Freeway (M-10) and Northwestern Highway
- 96 car parking
- Lease Rate: \$25.00/sq.ft. NNN
- Sale Price: \$2,800,000 (\$342.26/sq.ft.)



For more information, please contact:

STEVE GORDON
(248) 948 0101
sgordon@signatureassociates.com

DAN MORROW
(248) 799 3144
dmorrow@signatureassociates.com



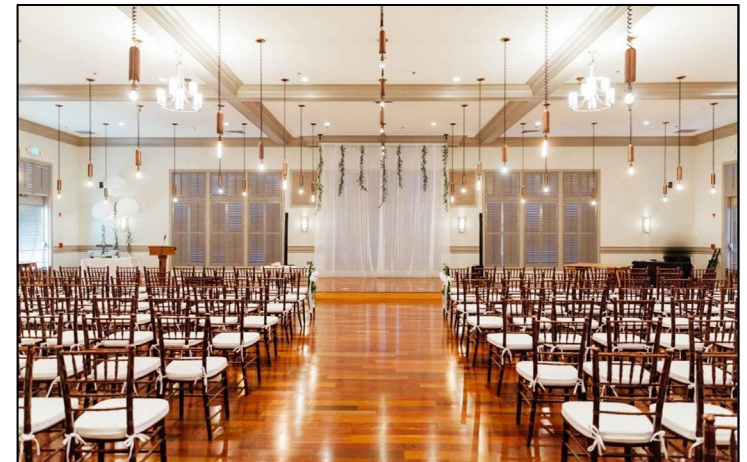
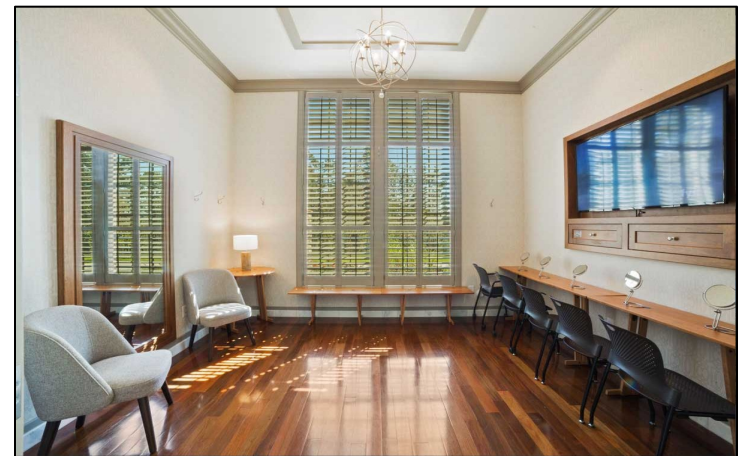
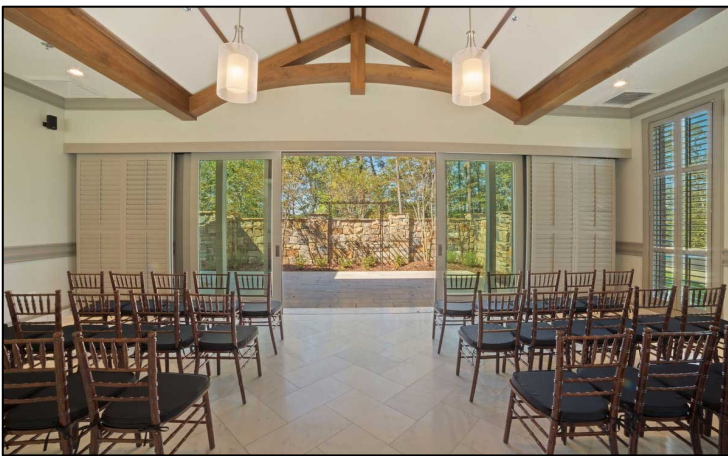
**SIGNATURE
ASSOCIATES**
KNOW SIGNATURE | KNOW RESULTS

26100 Northwestern Highway – Southfield, MI

For Sale or Lease – Office / Retail / Commercial

8,181
Square Feet
AVAILABLE

Photos



For more information, please contact:

STEVE GORDON
(248) 948 0101
sgordon@signatureassociates.com

DAN MORROW
(248) 799 3144
dmorrow@signatureassociates.com

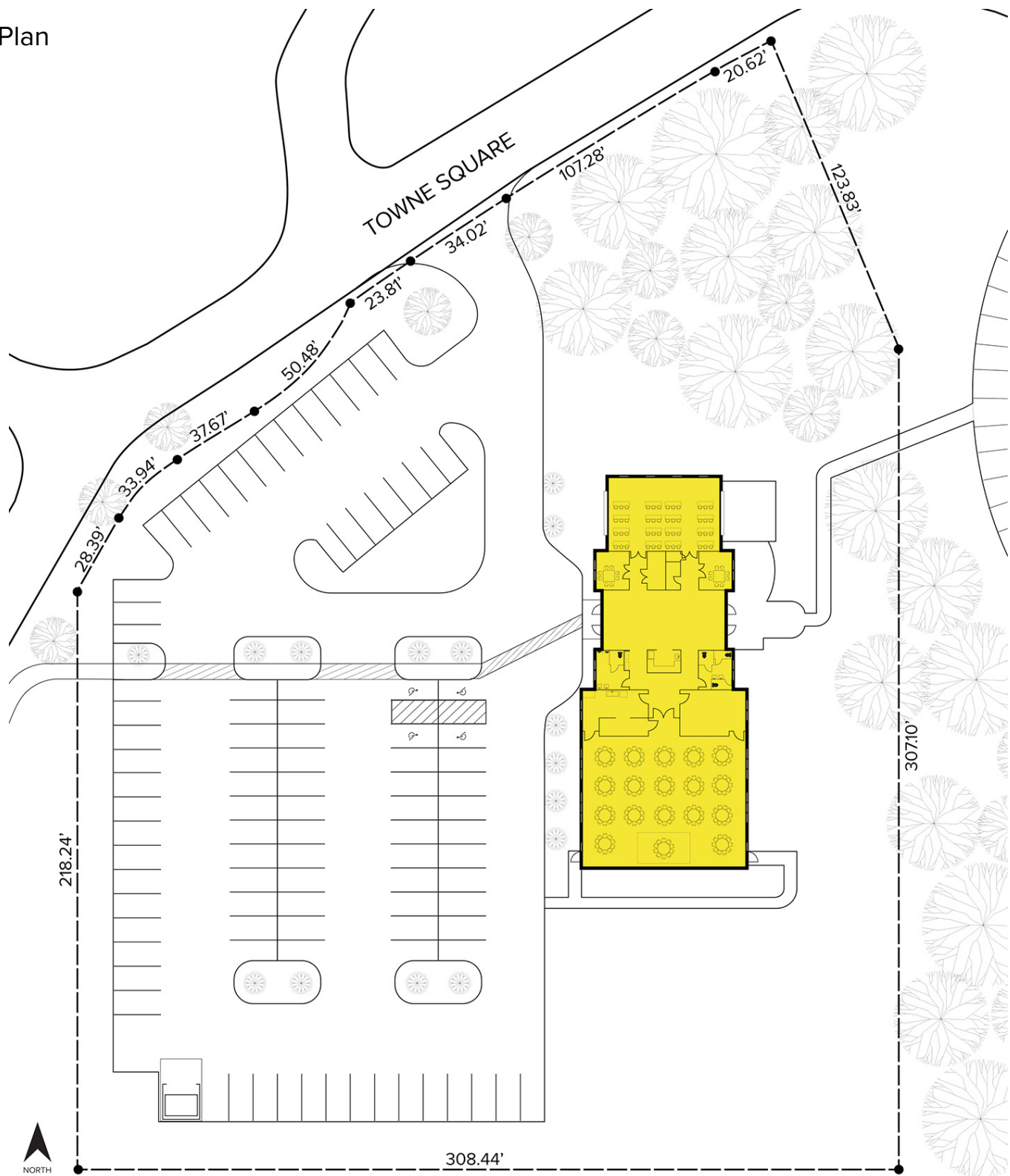
SIGNATURE ASSOCIATES
One Towne Square, Suite 1200
Southfield, MI 48076
www.signatureassociates.com

Information is subject to verification and no liability for errors or omissions is assumed. Price is subject to change and listing withdrawal.

26100 Northwestern Highway – Southfield, MI
For Sale or Lease – Office / Retail / Commercial

8,181
Square Feet
AVAILABLE

Site Plan



For more information, please contact:

STEVE GORDON
(248) 948 0101
sgordon@signatureassociates.com

DAN MORROW
(248) 799 3144
dmorrow@signatureassociates.com

SIGNATURE ASSOCIATES
One Towne Square, Suite 1200
Southfield, MI 48076
www.signatureassociates.com

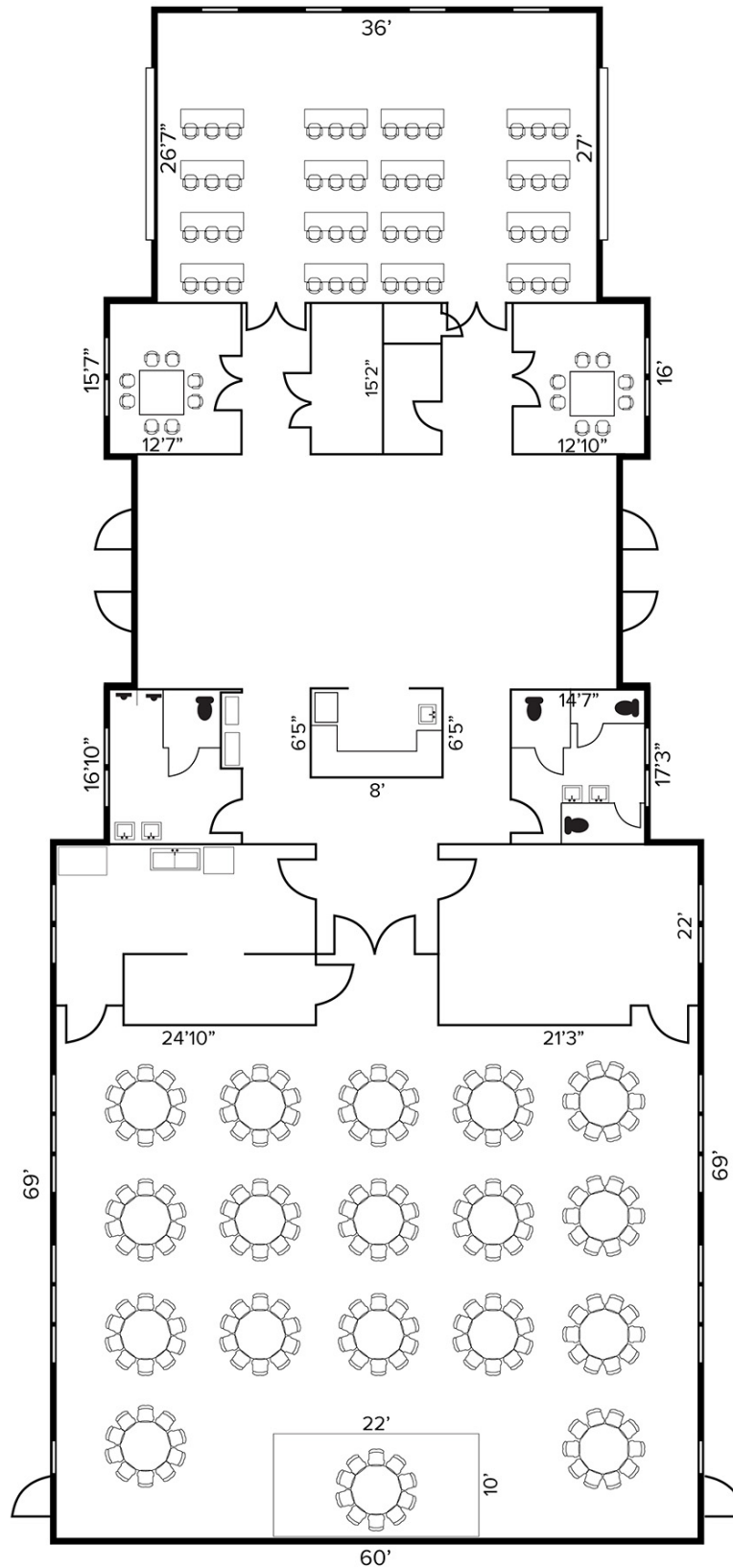
Information is subject to verification and no liability for errors or omissions is assumed. Price is subject to change and listing withdrawal.

26100 Northwestern Highway – Southfield, MI

For Sale or Lease – Office / Retail / Commercial

8,181
Square Feet
AVAILABLE

Floor Plan



For more information, please contact:

STEVE GORDON

(248) 948 0101

sgordon@signatureassociates.com

DAN MORROW

(248) 799 3144

dmorrow@signatureassociates.com

SIGNATURE ASSOCIATES

One Towne Square, Suite 1200

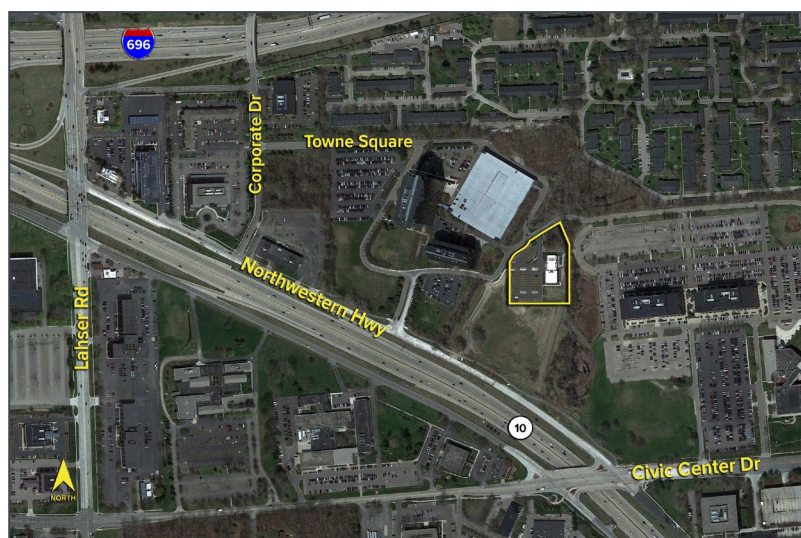
Southfield, MI 48076

www.signatureassociates.com

26100 Northwestern Highway – Southfield, MI

For Sale or Lease – Office / Retail / Commercial

8,181
Square Feet
AVAILABLE

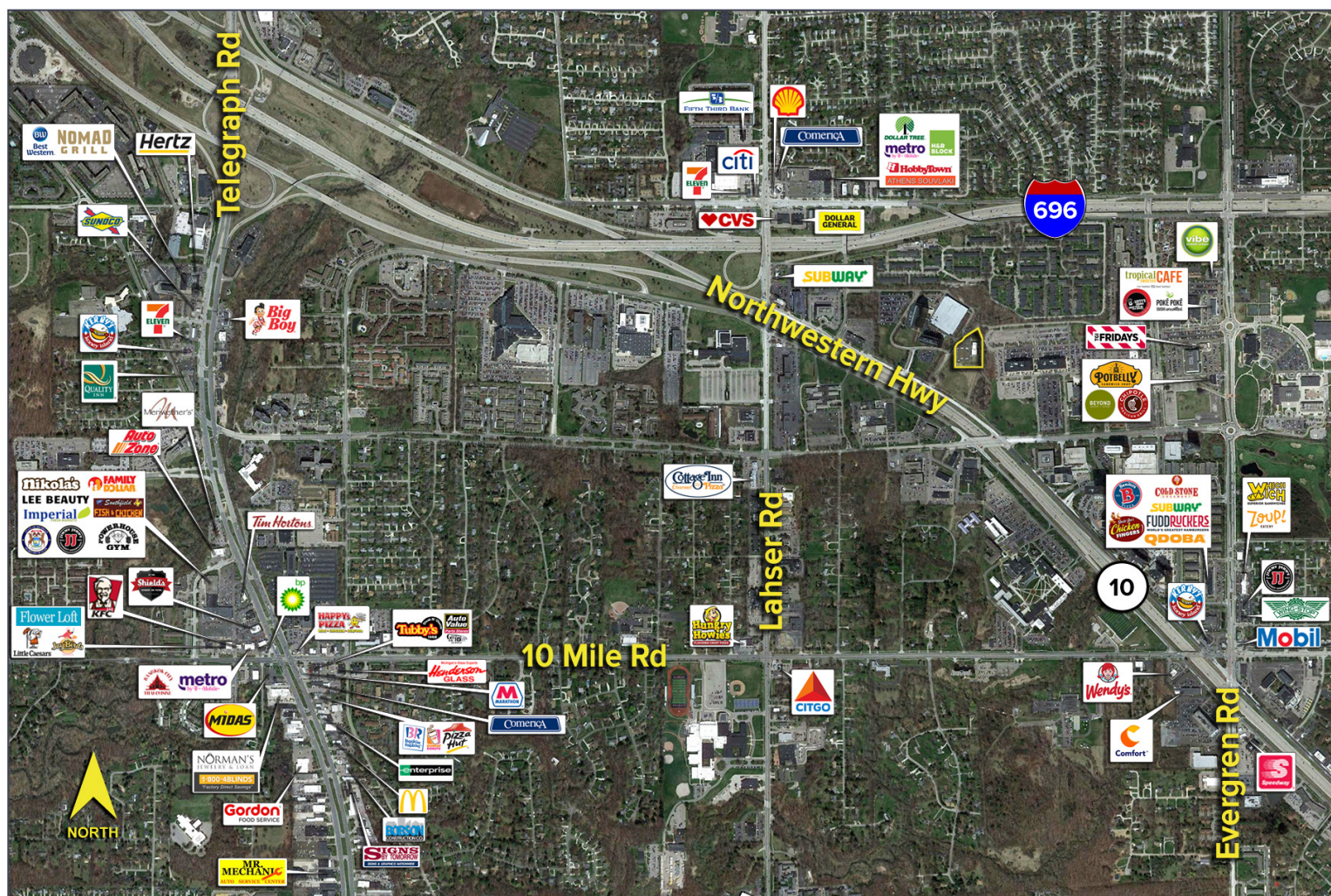


DEMOGRAPHICS

	POPULATION	MED. HH INCOME
1 MILE	8,377	\$75,196
3 MILE	85,914	\$66,211
5 MILE	279,080	\$70,361

TRAFFIC COUNTS (TWO-WAY)

121,660	M-10 N. of 10 Mile Rd. 2-Way
115,545	M-10 S. of 10 Mile Rd. 2-Way
150,500	I-696 & 11 Mile Rd. 2-Way



For more information, please contact:

STEVE GORDON

(248) 948 0101

sgordon@signatureassociates.com

DAN MORROW

(248) 799 3144

dmorrow@signatureassociates.com

SIGNATURE ASSOCIATES

One Towne Square, Suite 1200

Southfield, MI 48076

www.signatureassociates.com