
149 Kent Avenue

**WILLIAMSBURG
BROOKLYN, NY**



149 KENT AVENUE

Property Details

Location

Corner of North 5th Street

Approximate Size

Ground Floor 2,750 SF*

*divisible

Proposed Divisions

Ground Floor

Space A 1,250 SF

Space B 1,500 SF

Ceiling Height

Ground Floor 21 FT

Frontage

42 FT on Kent Avenue

Term

Negotiable

Possession

Immediate

Rent

Available upon request

Site Status

Formerly Dime Savings Bank

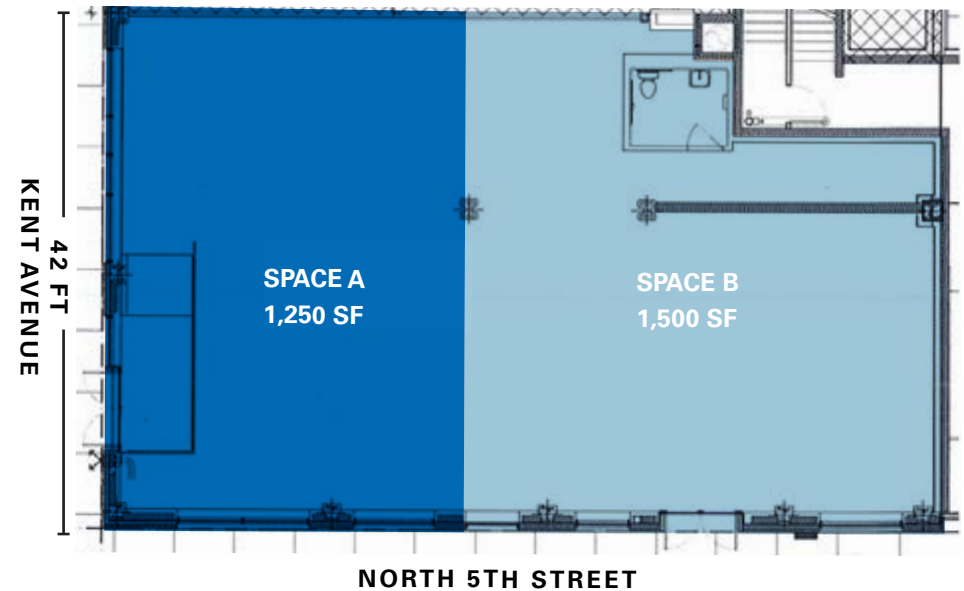
Neighbors

Apple, Whole Foods Market, Shake Shack, Trader Joe's, Supreme, Nike, J.Crew, Brooklyn Harvest Market, Levi's, Madewell, CVS Pharmacy, Duane Reade, Scotch & Soda, Blue Bottle Coffee, Urban Outfitters, Sweetgreen, Muji, Northwell Health and FedEx

Comments

Space is vented

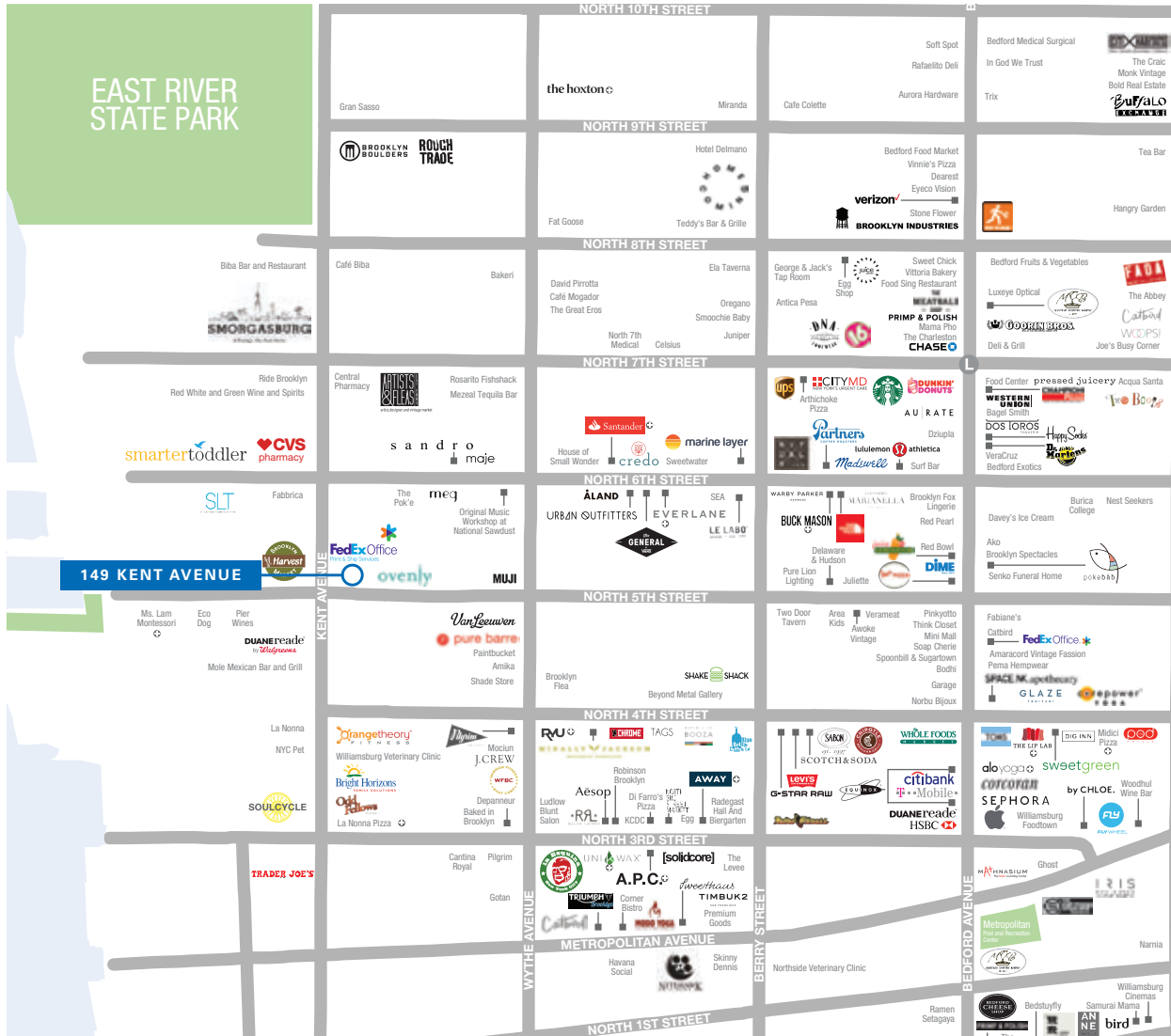
Proposed Division - Ground Floor



Area Neighbors



Area Retail



CONTACT

Barry Fishbach
 t 212-331-0115
 barry.fishbach@nmrk.com

Alex Hedaya
 t 212-351-9343
 alex.hedaya@nmrk.com
nmrk.com