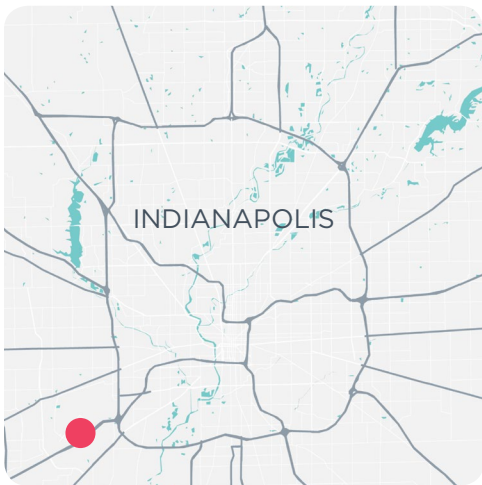


LEASE

RETAIL



### ▶ CAMBRIDGE WAY SHOPS // RETAIL SPACE & OUTLOT



#### AVAILABLE SPACE

1,200-1,600 SF  
\$15/SF NNN

#### AVAILABLE LAND

±0.75 AC Outlot  
\$200,000 or Build-to-Suit

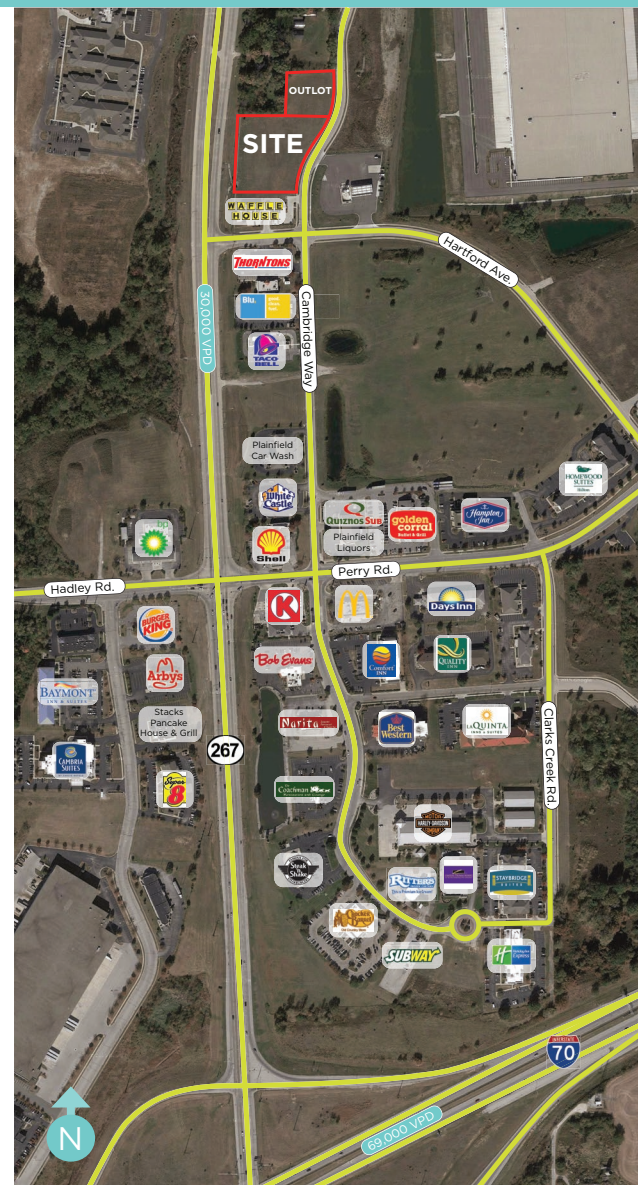
Join Pop-Up Nail Salon and Payless Liquors! Possible tenants include pizza, dry cleaner, dentist, vet and many more!

- + 14,000 SF retail center on 2.52 acres
- + Strong workforce located at Airwest Business Park
- + Zoned: general business
- + Great visibility
  - SR 267: 30,000 VPD
  - I-70: 69,000 VPD

9339 Priority Way West Drive  
Suite 120  
Indianapolis, IN 46240  
317.663.6000

**GREG SMITH**  
Vice President  
O 317.663.6081  
C 317.513.3544  
greg.smith@rcre.com

**TABATHA REID**  
Associate  
O 317.663.6077  
C 951.837.1092  
tabatha.reid@rcre.com



## DEMOGRAPHICS\*

	1 MILE	3 MILES	5 MILES
Population	2,978	23,852	66,643
Households	1,310	8,897	24,224
Average HH Income	\$78,600	\$73,108	\$78,036
Median Age	37.9	37.5	35.9

\*SitesUSA 2016 Estimated

Close to I-70/SR 267 interchange, Airwest Business Park, and Plainfield High School (1,500 students). Hendricks county is one of the top 5 fastest growing counties in Indiana.

**GREG SMITH**  
 Vice President  
 ☎ 317.663.6081  
 ☎ 317.513.3544  
 greg.smith@rcre.com

**TABATHA REID**  
 Associate  
 ☎ 317.663.6077  
 ☎ 951.837.1092  
 tabatha.reid@rcre.com



in #growIndy

The information contained herein was obtained from sources we consider reliable. We cannot be responsible for errors, omissions, prior sale or lease, withdrawal from the market or change in price. Seller and broker make no representation as to the environmental condition of the property and recommend the lessee's/purchaser's independent investigation.

9339 Priority Way West Drive  
 Suite 120  
 Indianapolis, IN 46240  
 317.663.6000