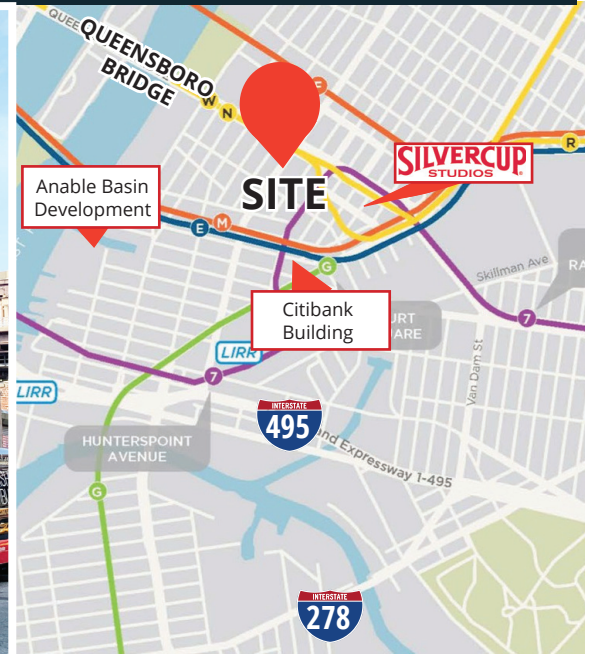


LONG ISLAND CITY WAREHOUSE AVAILABLE

42-20 12TH STREET | LONG ISLAND CITY, NY 11101



VAULTED-CEILING WAREHOUSE FACILITY LOCATED AT QUEENSBORO PLAZA!

AVAILABLE SPACE:

7,600 SF GROUND FLOOR
WAREHOUSE AND OFFICE

3,000 SF MEZZ. SPACE

10,600 SF TOTAL

PLOT: 8,500 SF

ZONING: M1-4

ALLOWABLE FAR:

2.0 COMMERCIAL

6.5 COMMUNITY USE

TAXES: \$40,038

TRANSPORTATION

F M N W 7 SUBWAY LINES

NEARBY

QUEENSBORO PLAZA

QUEENSBORO BRIDGE

MIDTOWN TUNNEL

BROOKLYN QUEENS EXPWY.

FEATURES:

- 1 DRIVE-IN DOOR:
14.9(w)X14.2(h)
- 900 SF PRIVATE PARKING
- FLOOR DRAINS
- HEAVY POWER - 600 AMPS
- OVERSIZED GAS MAIN
- CEILING HEIGHT: 14.2'-
24.2' FEET.
- MINIMAL COLUMNS

For More Information Exclusive Agent:

MATTHEW MCMULLEN
(718) 786-5050 x246
mmcmullen@greiner-maltz.com

GREINER-MALTZ

REAL ESTATE

Creating Opportunities Together

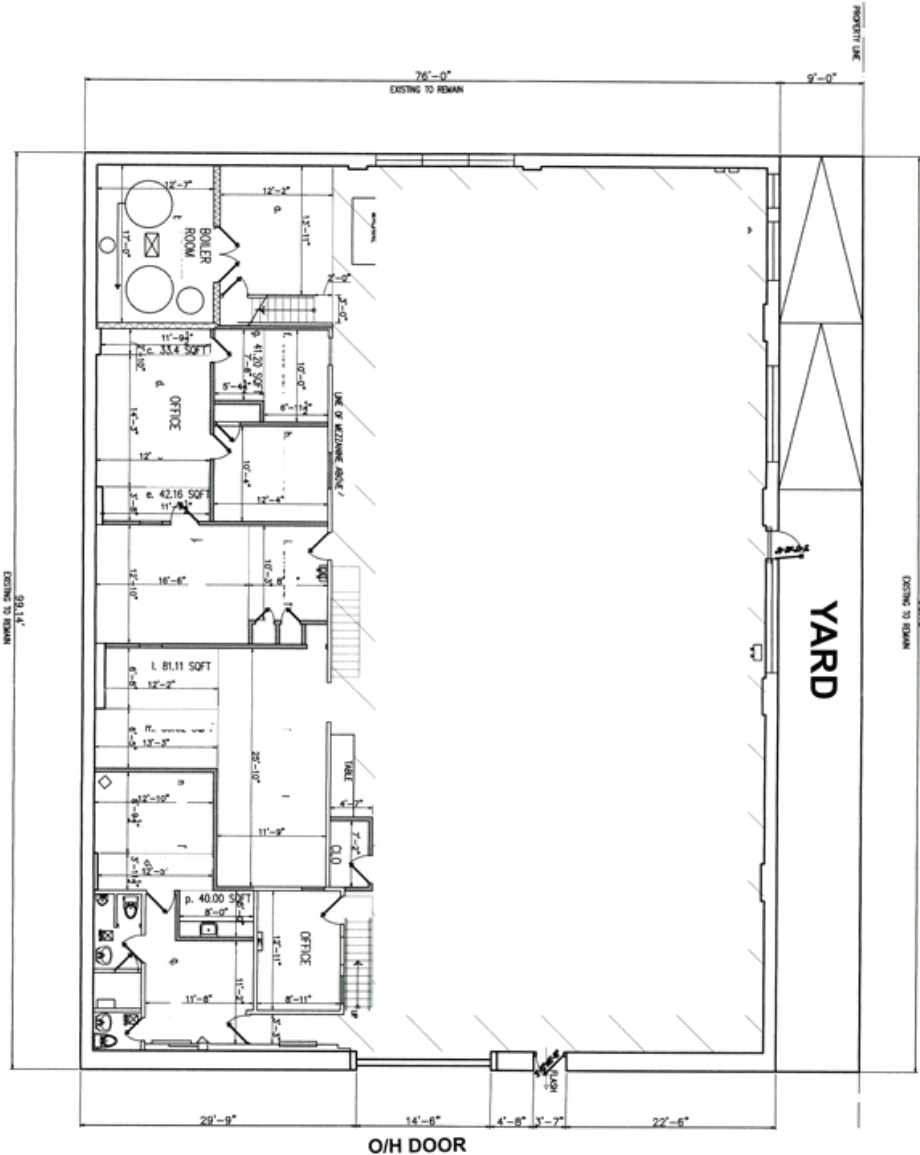
WWW.GREINER-MALTZ.COM

Any information set-forth herein has been obtained from sources deemed reliable, however, we have not verified it, and make no representation or warranty of any kind, including without limitation: condition: either latent or patent, size or manner of construction of the property, compliance with local law, and environmental conditions. All information submitted herein is subject to errors and omissions, and the right of our principal(s), to withdraw, modify, or condition the listing with-out prior notice. Broker cooperation encouraged.

LONG ISLAND CITY WAREHOUSE AVAILABLE

42-20 12TH STREET | LONG ISLAND CITY, NY 11101

FLOOR PLAN



12TH STREET

For More Information Exclusive Agent:

MATTHEW MCMULLEN
(718) 786-5050 x246
mmcmullen@greiner-maltz.com

GREINER-MALTZ

REAL ESTATE

Creating Opportunities Together

WWW.GREINER-MALTZ.COM

Any information set-forth herein has been obtained from sources deemed reliable, however, we have not verified it, and make no representation or warranty of any kind, including without limitation: condition: either latent or patent, size or manner of construction of the property, compliance with local law, and environmental conditions. All information submitted herein is subject to errors and omissions, and the right of our principal(s), to withdraw, modify, or condition the listing with-out prior notice. Broker cooperation encouraged.