



**FOR LEASE: 10820 W 64th St.
Shawnee, KS 66203**



PROPERTY INFO

- 2,000 +/- SF available on upper level
- 1,300 +/- SF available on lower level (includes overhead door access)
- Private entrance with opportunity for exterior signage
- Natural light, entire wall of windows facing north
- Excellent access to Shawnee Mission Parkway and I-35

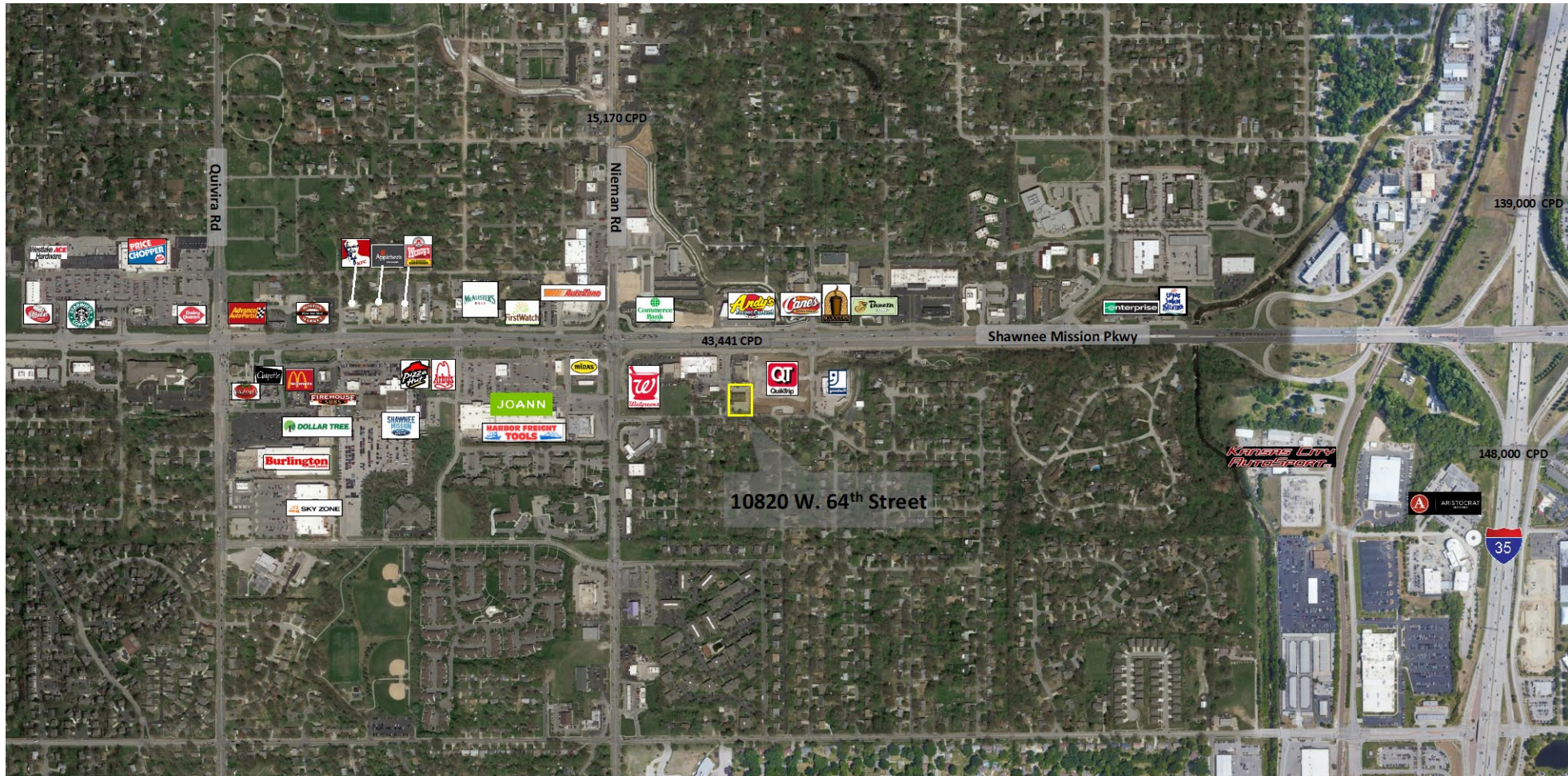
Lynette Russ
Lynette@cadencekc.com
913.747.3309

Adam Lyngar
adam@cadencekc.com
916.747.3326

CADENCE
COMMERCIAL REAL ESTATE



FOR LEASE: 10820 W 64th St. Shawnee, KS 66203



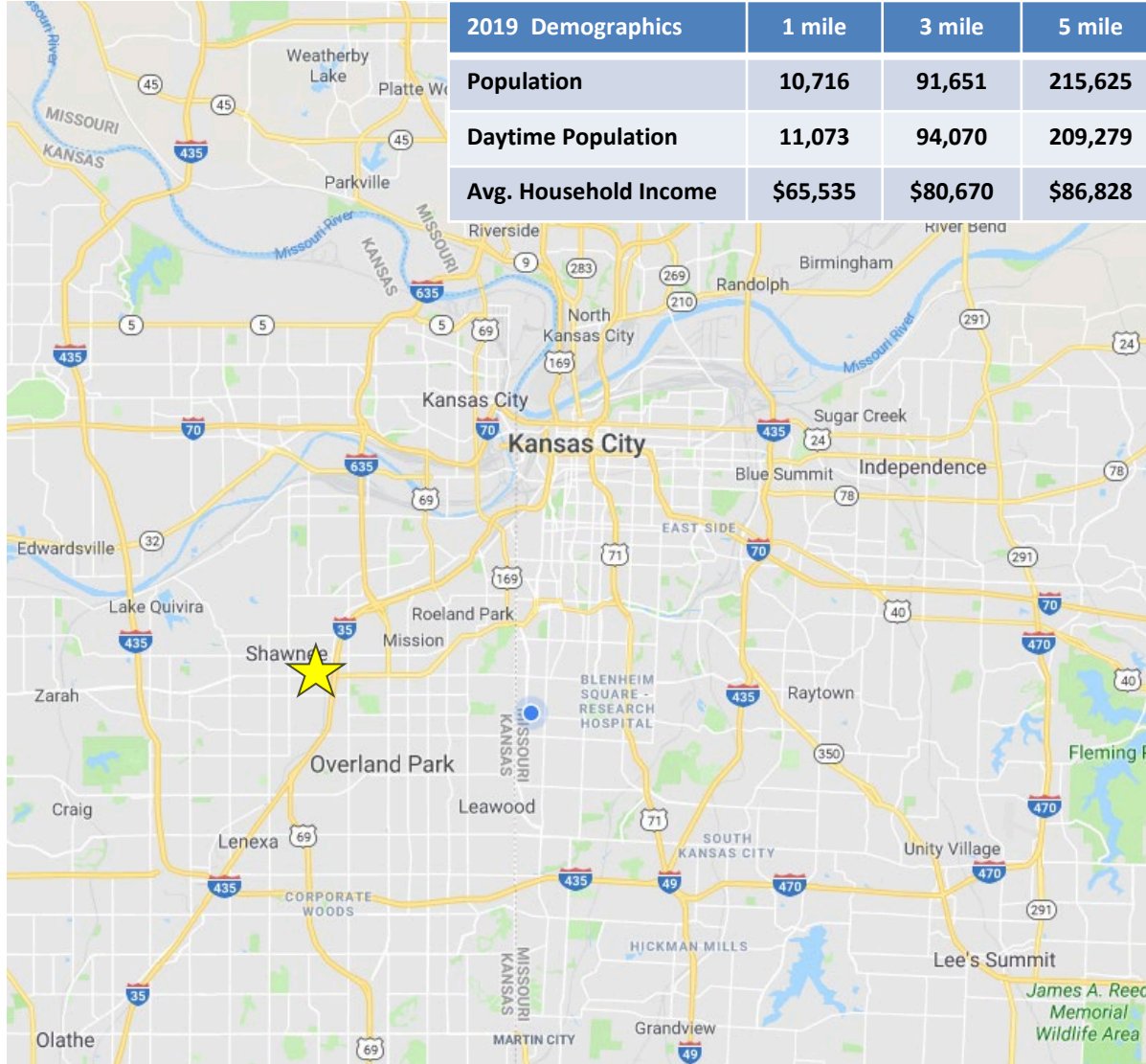
Lynette Russ
Lynette@cadencekc.com
913.747.3309

Adam Lyngar
adam@cadencekc.com
916.747.3326

CADENCE
COMMERCIAL REAL ESTATE



FOR LEASE: 10820 W 64th St. Shawnee, KS 66203



Lynette Russ
Lynette@cadencekc.com
913.747.3309

Adam Lyngar
adam@cadencekc.com
916.747.3326

CADENCE
COMMERCIAL REAL ESTATE