

# Palmetto Plaza

City of Palmetto, GA



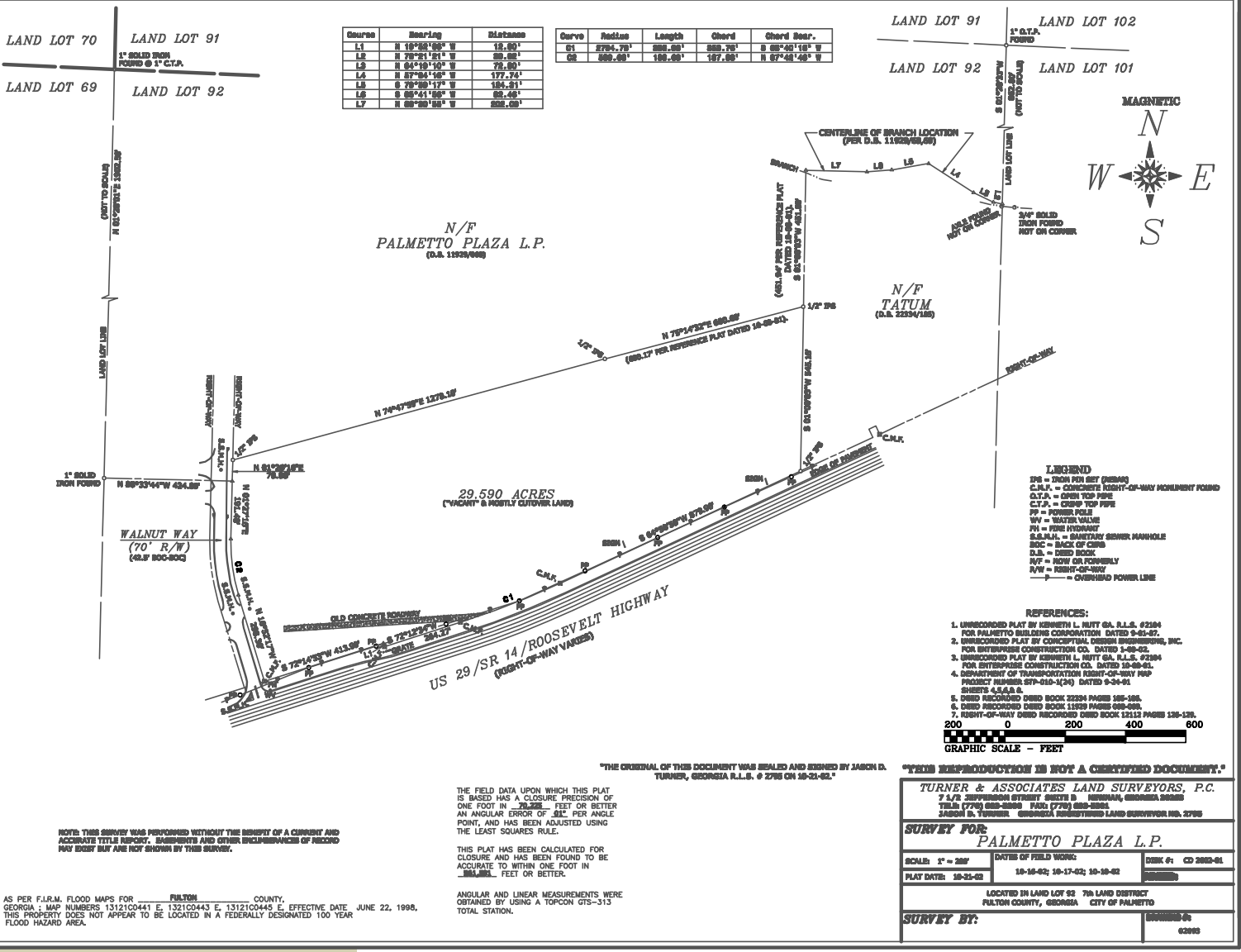
## PROPERTY DETAILS:

- 29.59 acres on US Hwy. 29
- Zoned Commercial
- All Utilities
- Great Visibility

RICK SEWELL  
BROKER  
770.463.4667 office  
404.583.2436 cell  
rsewell@creelproperties.com



105 W BROAD STREET  
FAIRBURN, GA 30213  
www.creelproperties.com



NOTE: THIS SURVEY WAS PERFORMED WITHOUT THE BENEFIT OF A CURRENT AND ACCURATE TITLE REPORT, SURVEYMENTS AND OTHER RECORDS OF RECORD MAP BOOK MAY AND NOT SHOWN BY THIS SURVEY.

AS PER F.I.R.M. FLOOD MAPS FOR FULTON COUNTY, GEORGIA; MAP NUMBERS 13121C0441 E, 13121C0443 E, 13121C0445 E, EFFECTIVE DATE, JUNE 22, 1998. THIS PROPERTY DOES NOT APPEAR TO BE LOCATED IN A FEDERALLY DESIGNATED 100 YEAR FLOOD HAZARD AREA.

THE FIELD DATA UPON WHICH THIS PLAT IS BASED HAS A CLOSURE PRECISION OF ONE FOOT IN 29,598 FEET OR BETTER AN ANGULAR ERROR OF .30C PER ANGLE POINT, AND HAS BEEN ADJUSTED USING THE LEAST SQUARES RULE.

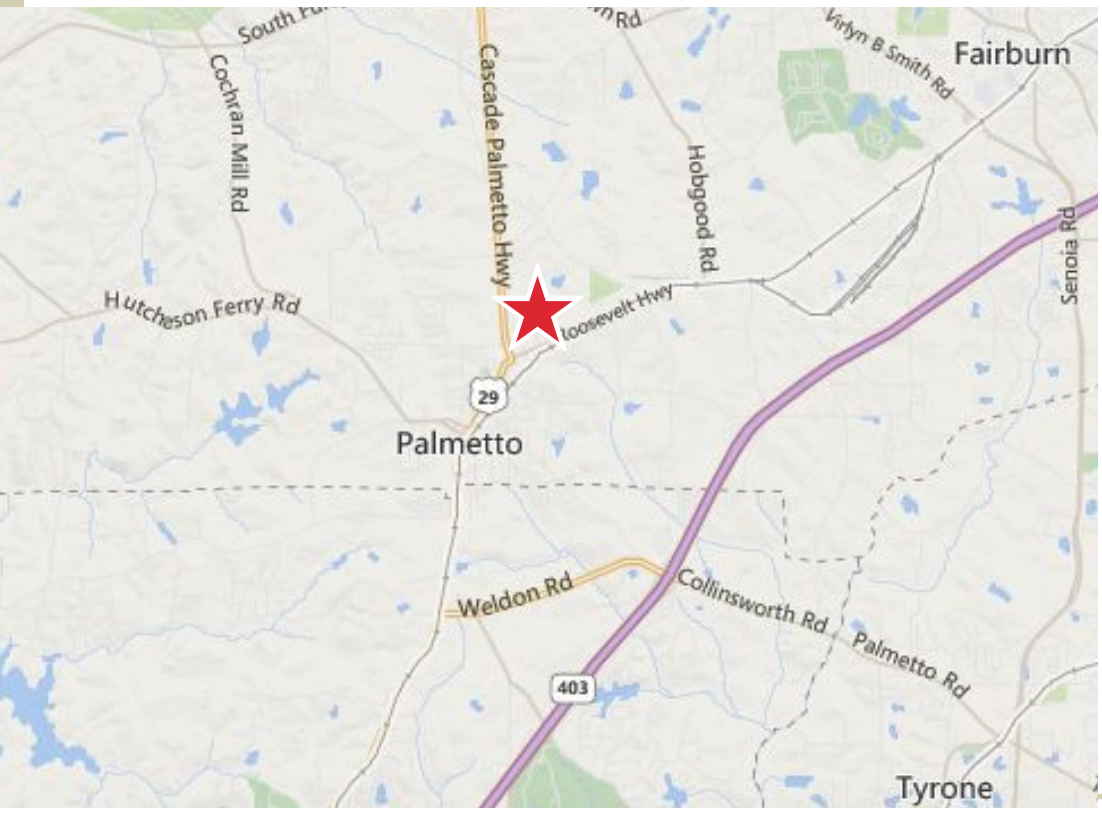
THIS PLAT HAS BEEN CALCULATED FOR CLOSURE AND HAS BEEN FOUND TO BE ACCURATE TO WITHIN ONE FOOT IN 29,598 FEET OR BETTER.

ANGULAR AND LINEAR MEASUREMENTS WERE OBTAINED BY USING A TOPCON GTS-313 TOTAL STATION.

"THE ORIGINAL OF THIS DOCUMENT WAS SEALED AND SIGNED BY JASON D. TURNER, GEORGIA R.L.S. # 2785 ON 10-21-02."

"THIS REPRODUCTION IS NOT A CERTIFIED DOCUMENT."

TURNER & ASSOCIATES LAND SURVEYORS, P.C.  
 7 1/2 SUTTONS LANE, SUITE 200  
 TALLASSEE, GEORGIA 31505  
 JASON D. TURNER, GEORGIA REGISTERED LAND SURVEYOR NO. 2785



RICK SEWELL  
 BROKER  
 770.463.4667 office  
 404.583.2436 cell  
 rsewell@creelproperties.com



105 W BROAD STREET  
 FAIRBURN, GA 30213  
 www.creelproperties.com