

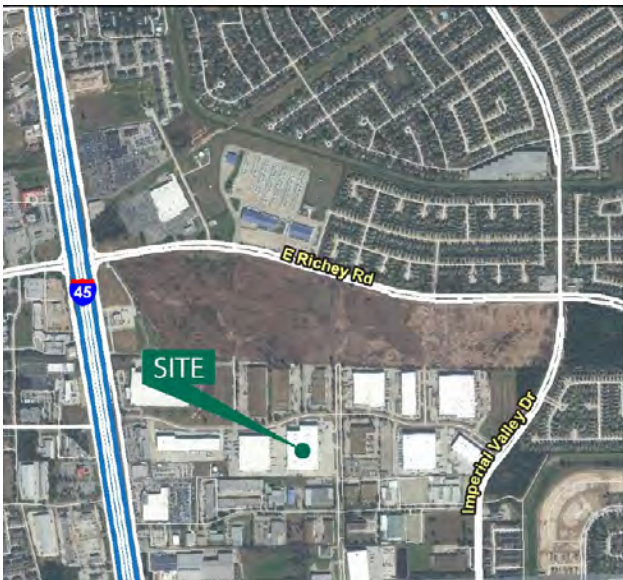
Prologis Park Northpark

500 Northpark Central Drive, Suite 400

Houston, Texas 77073 USA



41,600 Square Feet Industrial Space For Lease



location

- Conveniently located along I-45 North between Airtex Drive and Richey Road
- Easy access to I-45, Beltway 8 and the Hardy Toll Road
- Part of the master planned Prologis Park Northpark
- Unincorporated Harris County
- Double Freeport tax exemption

facility

- 174,200 SF cross dock facility with 41,600 SF available
- 2,445 SF office
- 30' clear height
- 7 dock high doors / 1 drive in ramp
- ESFR Sprinkler System
- Trailer parking available

Cushman & Wakefield

Jason Dillee

jason.dillee@cushwake.com

ph +1 713.345.1432

1330 Post Oak Blvd., Suite 2700

Houston, Texas 77056-3054 USA

Cushman & Wakefield

Nathan Wynne

nathan.wynne@cushwake.com

ph +1 713.345.1811

1330 Post Oak Blvd., Suite 2700

Houston, Texas 77056-3054 USA

Prologis

Kevin Wittler

kwittler@prologis.com

ph +1 713.613.6927

1296 North Post Oak Road

Houston, Texas 77055 USA

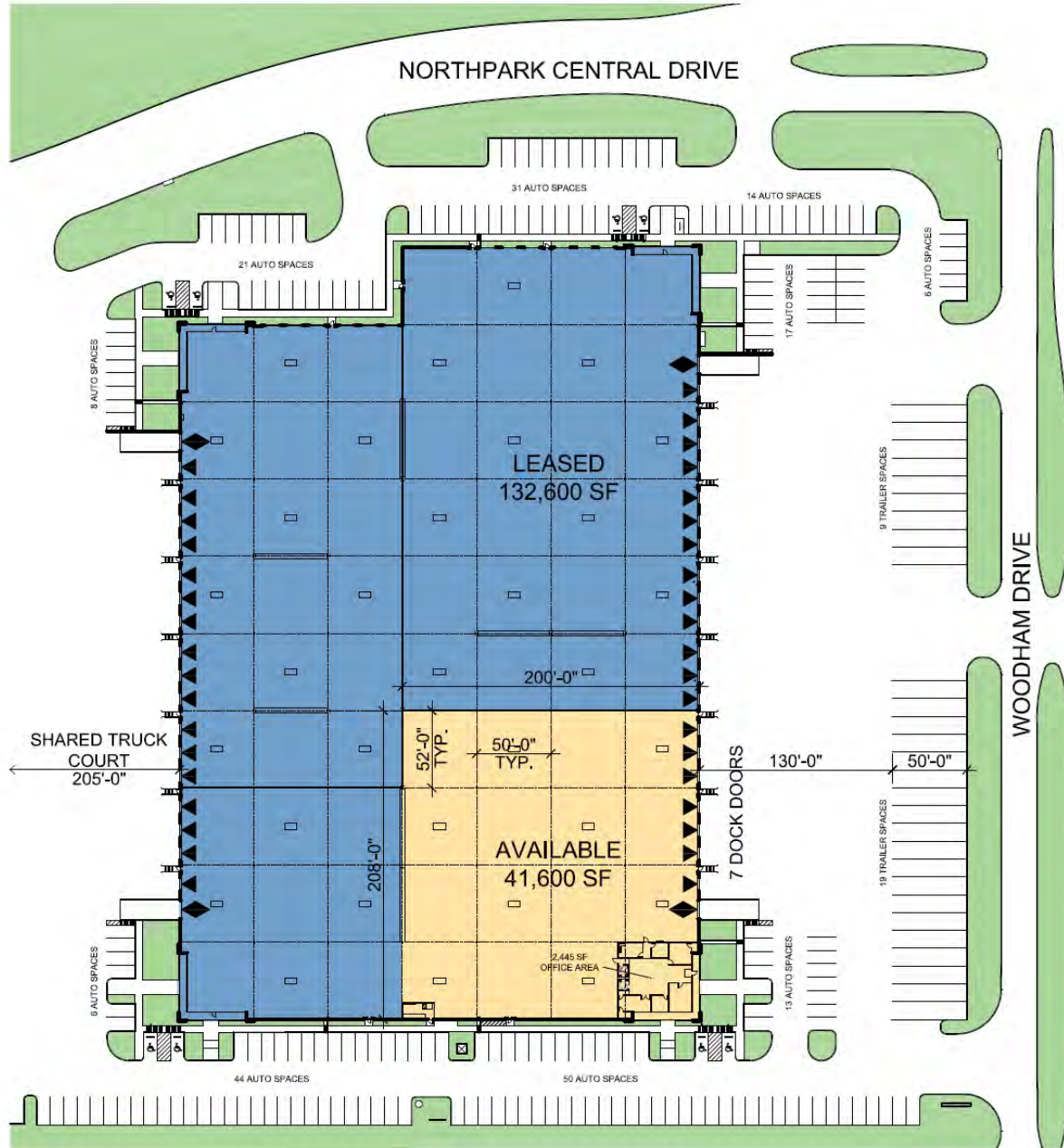
Prologis Park Northpark

500 Northpark Central Drive, Suite 400

Houston, Texas USA



41,600 Square Feet Industrial Space For Lease



Cushman & Wakefield
Jason Dillee
jason.dillee@cushwake.com
ph +1 713.345.1432
1330 Post Oak Blvd., Suite 2700
Houston, Texas 77056-3054 USA

Cushman & Wakefield
Nathan Wynne
nathan.wynne@cushwake.com
ph +1 713.345.1811
1330 Post Oak Blvd., Suite 2700
Houston, Texas 77056-3054 USA

Prologis
Kevin Wittler
kwittler@prologis.com
ph +1 713.613.6927
1296 North Post Oak Road
Houston, Texas 77055 USA

No warranty or representation, expressed or implied, is made as to the accuracy of the information contained herein, and same is submitted subject to error and omissions.