

228E45THSTREET

SUBLEASE



5,200
RENTABLE SQUARE FEET

RENT TYPE: Call for Pricing

POSSESSION: April 1st, 2019

TERM: Through January 31st, 2022

8 offices, large conference room, small meeting room, large enclosed bullpen or media center, reception, furniture available.



For more information, please contact:

BRANDON DEGRAFF
212 841 7699
brandon.degraff@cushwake.com

JIMMY GIATTINO
212 841 7684
jimmy.giattino@cushwake.com

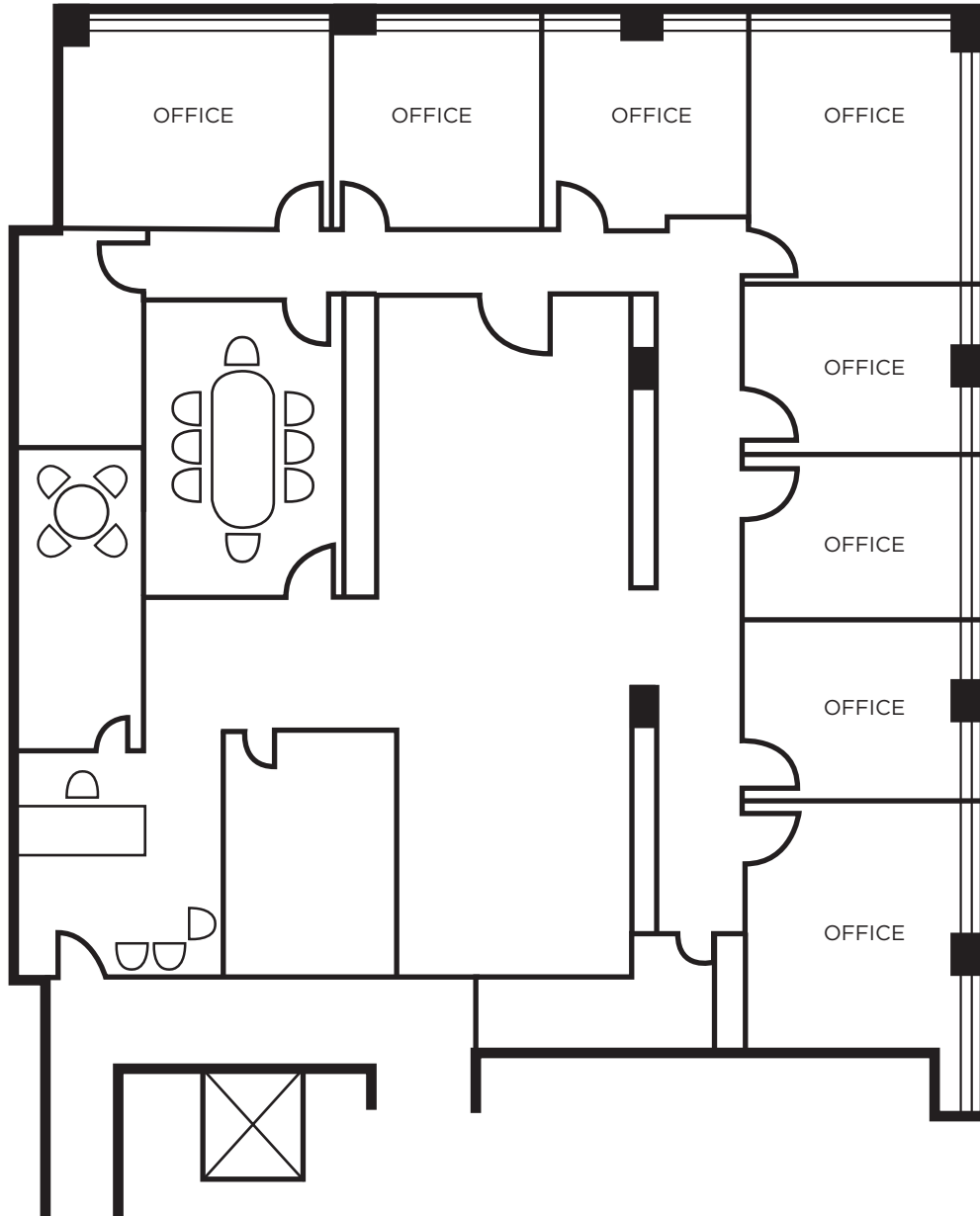
A full commission computed and earned in accordance with the rates and conditions of our agency agreement with our principal, when received from our principal, will be paid to a cooperating broker who consummates a sublease which is unconditionally executed and delivered by and between sublandlord and subtenant. (A copy of the rates and conditions referred to above are available upon request.)

FLOOR PLAN

228 EAST 45TH STREET



5,200 RSF



For more information, please contact:

BRANDON DEGRAFF
212 841 7699
brandon.degraff@cushwake.com

JIMMY GIATTINO
212 841 7684
jimmy.giattino@cushwake.com

A full commission computed and earned in accordance with the rates and conditions of our agency agreement with our principal, when received from our principal, will be paid to a cooperating broker who consummates a sublease which is unconditionally executed and delivered by and between sublandlord and subtenant. (A copy of the rates and conditions referred to above are available upon request.)

SPACE IMAGES

228 EAST 45TH STREET



For more information, please contact:

BRANDON DEGRAFF
212 841 7699
brandon.degraff@cushwake.com

JIMMY GIATTINO
212 841 7684
jimmy.giattino@cushwake.com

A full commission computed and earned in accordance with the rates and conditions of our agency agreement with our principal, when received from our principal, will be paid to a cooperating broker who consummates a sublease which is unconditionally executed and delivered by and between sublandlord and subtenant. (A copy of the rates and conditions referred to above are available upon request.)