



**COLDWELL
BANKER
COMMERCIAL**

CAINE

SALE / LEASE

CBCCAINE.COM

**OFFICE CONDOMINIUM
REGENCY COMMONS BUSINESS PARK**

103-A Regency Commons Drive
Greer, SC 29650

AVAILABLE SPACE
+/-7,616 RSF

REDUCED SALE PRICE: \$1,220,000
REDUCED LEASE RATE: \$16.75/RSF NNN



CONTACT

Pete Brett, CCIM
Commercial Sales Associate
864 250 6815
pbrett@cbccaine.com

T. Cox
Commercial Sales Associate
864 250 4043
tcox@cbccaine.com

©2021 Coldwell Banker. All Rights Reserved. Coldwell Banker and the Coldwell Banker Commercial logos are trademarks of Coldwell Banker Real Estate LLC. The Coldwell Banker® System is comprised of company owned offices which are owned by a subsidiary of Realty Brokerage Group LLC and franchised offices which are independently owned and operated. The Coldwell Banker System fully supports the principles of the Equal Opportunity Act.

**COLDWELL BANKER COMMERCIAL
CAINE**
117 Williams Street, Greenville, SC 29601
864.250.2800



SALE / LEASE

REGENCY COMMONS BUSINESS PARK

103-A Regency Commons Drive, Greer, SC 29650



REDUCED SALE PRICE **\$1,220,000**

OFFERING SUMMARY

Reduced Lease Rate: **\$16.75/RSF (NNN)**
NNN = \$2.93/RSF

Available SF: +/-7,616 RSF

Lot Size: +/-0.09 Acres

Year Built: 2006

Renovated: 2016

Zoning: PD - Greenville County

Price / SF: \$160.19

PROPERTY HIGHLIGHTS

- 2 Story first class space with elevator
- Corner unit in Regency Commons, a high end office building
- Originally built as a salon. Other uses include dental practice, spa, and specialty medical
- Renovated in 2016
- Plumbing available to most rooms
- Washer/Dryer hookup
- (2) Showers
- LED Lighting
- Abundant on-site parking
-

CBCCAINE.COM

Pete Brett, CCIM
Commercial Sales Associate
864 250 6815
pbrett@cbccaine.com

T. Cox
Commercial Sales Associate
864 250 4043
tcox@cbccaine.com

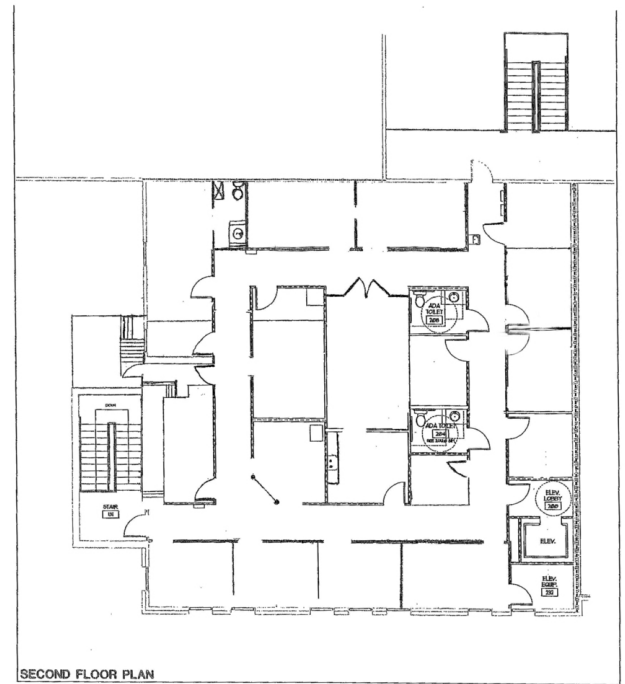
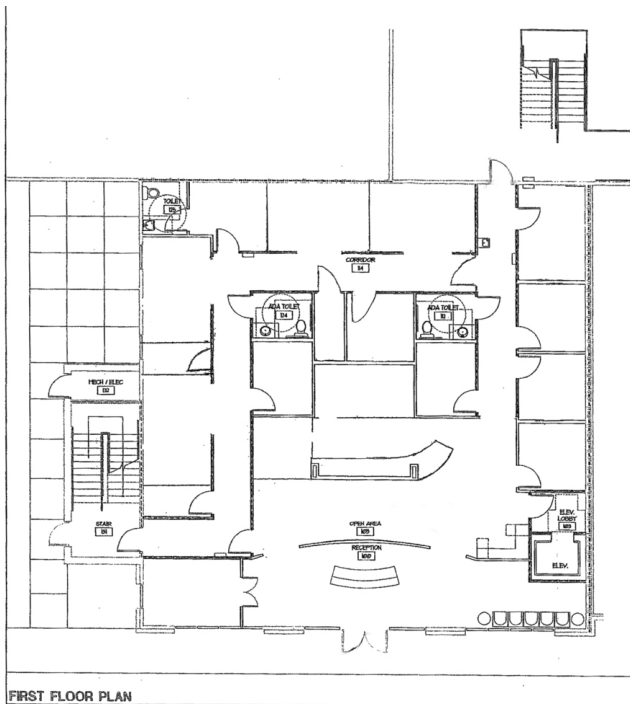




REGENCY COMMONS BUSINESS PARK

103-A Regency Commons Drive, Greer, SC 29650

SALE /
LEASE



CBCCAIN.COM

Pete Brett, CCIM
Commercial Sales Associate
864 250 6815
pbrett@cbccaine.com

T. Cox
Commercial Sales Associate
864 250 4043
tcox@cbccaine.com

 **COLDWELL
BANKER
COMMERCIAL**
CAINE



REGENCY COMMONS BUSINESS PARK

103-A Regency Commons Drive, Greer, SC 29650

SALE /
LEASE



CBCCAINE.COM

Pete Brett, CCIM
Commercial Sales Associate
864 250 6815
pbrett@cbccaine.com

T. Cox
Commercial Sales Associate
864 250 4043
tcox@cbccaine.com

 **COLDWELL
BANKER
COMMERCIAL
CAINE**



REGENCY COMMONS BUSINESS PARK

103-A Regency Commons Drive, Greer, SC 29650

SALE /
LEASE



CBCCAINE.COM

Pete Brett, CCIM
Commercial Sales Associate
864 250 6815
pbrett@cbccaine.com

T. Cox
Commercial Sales Associate
864 250 4043
tcx@cbccaine.com

 **COLDWELL
BANKER
COMMERCIAL
CAINE**



REGENCY COMMONS BUSINESS PARK

103-A Regency Commons Drive, Greer, SC 29650

SALE /
LEASE



CBCCAINE.COM

Pete Brett, CCIM
 Commercial Sales Associate
 864 250 6815
 pbrett@cbccaine.com

T. Cox
 Commercial Sales Associate
 864 250 4043
 tcox@cbccaine.com

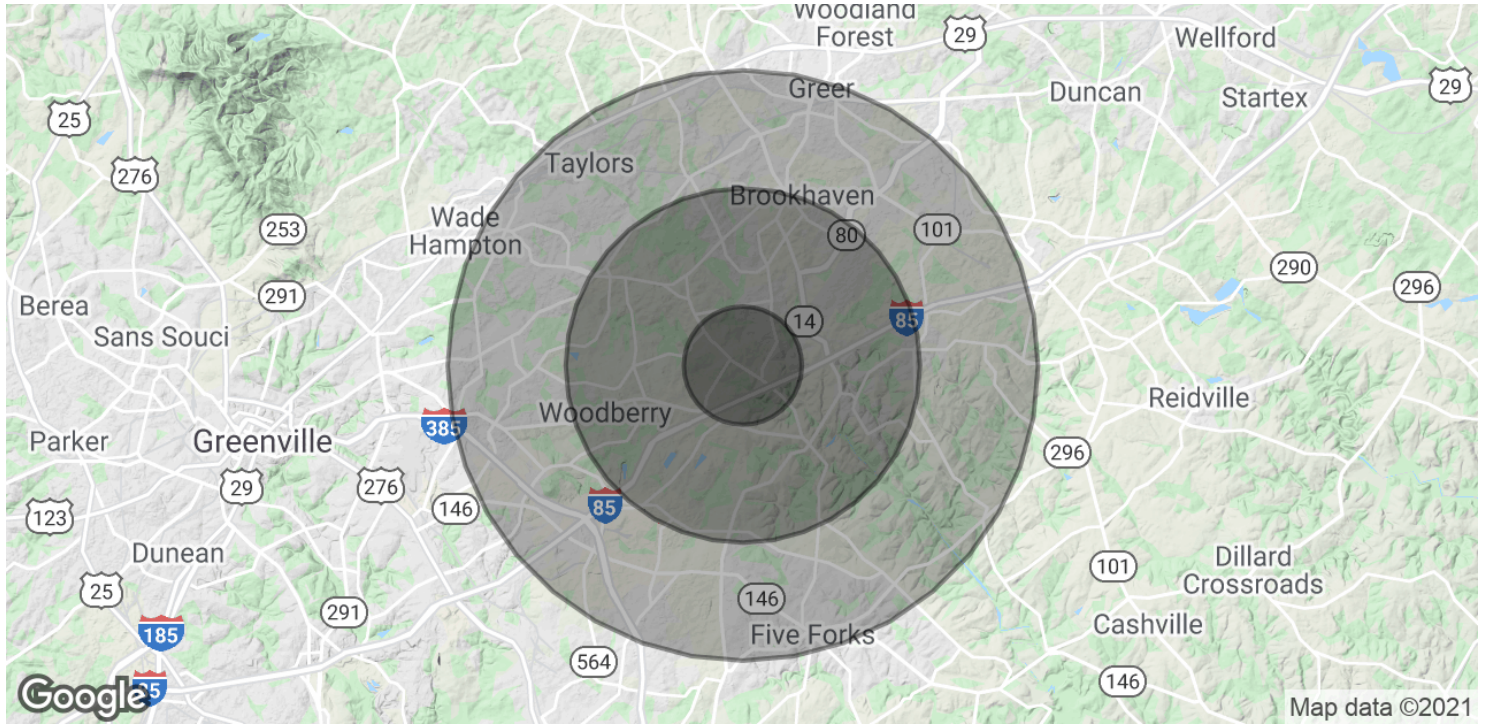
 **COLDWELL
 BANKER
 COMMERCIAL**
 CAINE



REGENCY COMMONS BUSINESS PARK

103-A Regency Commons Drive, Greer, SC 29650

SALE / LEASE



| POPULATION | 1 MILE | 3 MILES | 5 MILES |
|----------------------|-----------|-----------|-----------|
| Total Population | 6,044 | 38,944 | 101,366 |
| Average age | 38.7 | 39.1 | 39.1 |
| Average age (Male) | 36.9 | 37.3 | 37.7 |
| Average age (Female) | 39.4 | 40.0 | 40.0 |
| HOUSEHOLDS & INCOME | 1 MILE | 3 MILES | 5 MILES |
| Total households | 2,314 | 15,153 | 40,250 |
| # of persons per HH | 2.6 | 2.6 | 2.5 |
| Average HH income | \$93,430 | \$93,101 | \$82,379 |
| Average house value | \$264,929 | \$288,001 | \$252,908 |

* Demographic data derived from 2010 US Census

CBCCAINE.COM

Pete Brett, CCIM
 Commercial Sales Associate
 864 250 6815
 pbrett@cbccaine.com

T. Cox
 Commercial Sales Associate
 864 250 4043
 tcx@cbccaine.com

