

89 CROSBY STREET

BETWEEN SPRING & PRINCE STREETS | SOHO

ksr
KASSIN SABBAGH REALTY

**RETAIL
FOR
LEASE**

ksr
KASSIN SABBAGH REALTY



89 CROSBY STREET

BETWEEN SPRING & PRINCE STREETS | SOHO

SIZE

Ground Floor
+ Full Basement

1,500 SF

FRONTAGE

15'

CEILING HEIGHT

14'

POSSESSION

Immediate

ASKING RENT

Upon Request

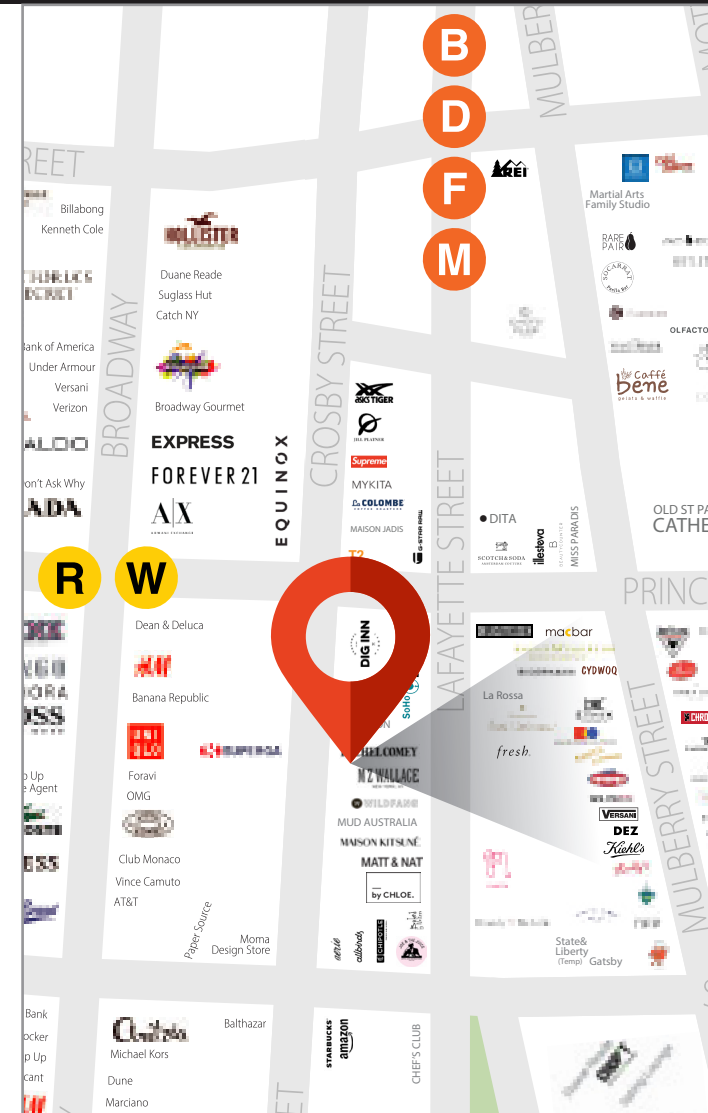
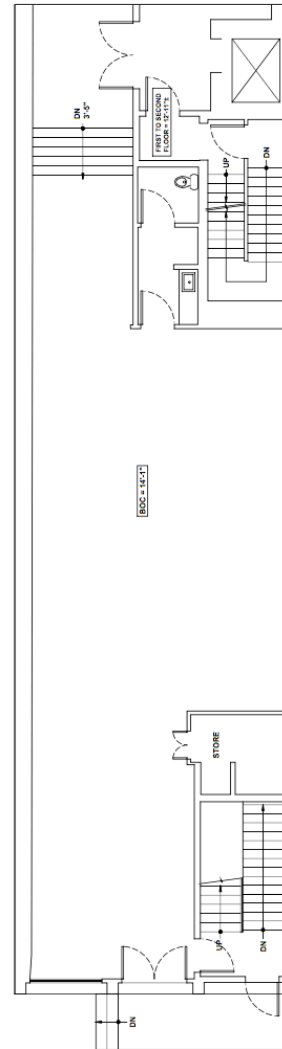
TRANSPORTATION

6 N R Q B D F M C E J Z

COMMENTS

- Newly renovated space with hardwood flooring, HVAC, bathroom
- Enormous windows flooding the space with natural light
- High ceilings give the space a majestic feel
- Steps away from the Crosby Street Hotel
- Loading dock and elevator are utilized for receiving inventory

FLOOR PLAN



CONTACT OUR BROKER(S) FOR MORE INFORMATION

MARC SITT

MSitt@ksrny.com

917.757.8863

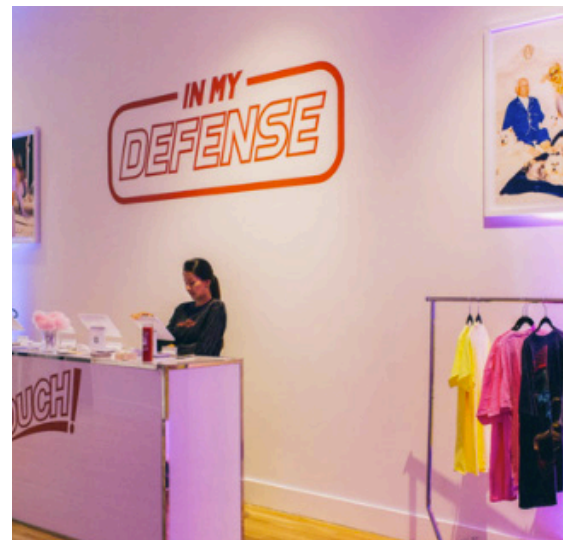
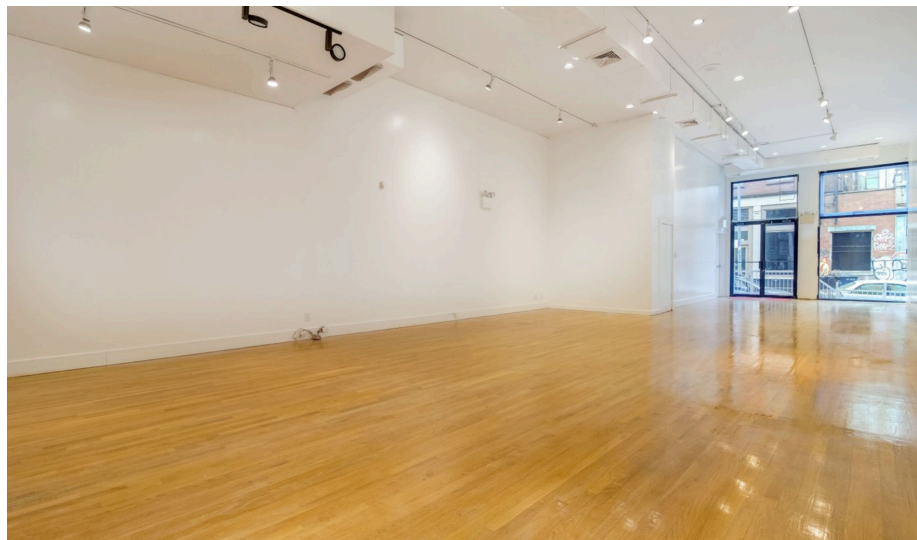
DOREL MELLOUL

DMelloul@ksrny.com

347.922.4563

89 CROSBY STREET

BETWEEN SPRING & PRINCE STREETS | SOHO



CONTACT OUR BROKER(S) FOR MORE INFORMATION

MARC SITT

MSitt@ksrny.com

917.757.8863

DOREL MELLOUL

DMelloul@ksrny.com

347.922.4563

All information supplied in this marketing presentation and/or flyer is from sources deemed reliable and is furnished subject to errors, omissions, modifications, removal of listings from sale/lease and to any listing condition. Any square footage, dimensions, floor plans and/or technical data set forth are approximations and are subject to further elaboration/confirmation.