

# 61 SIXTH AVENUE

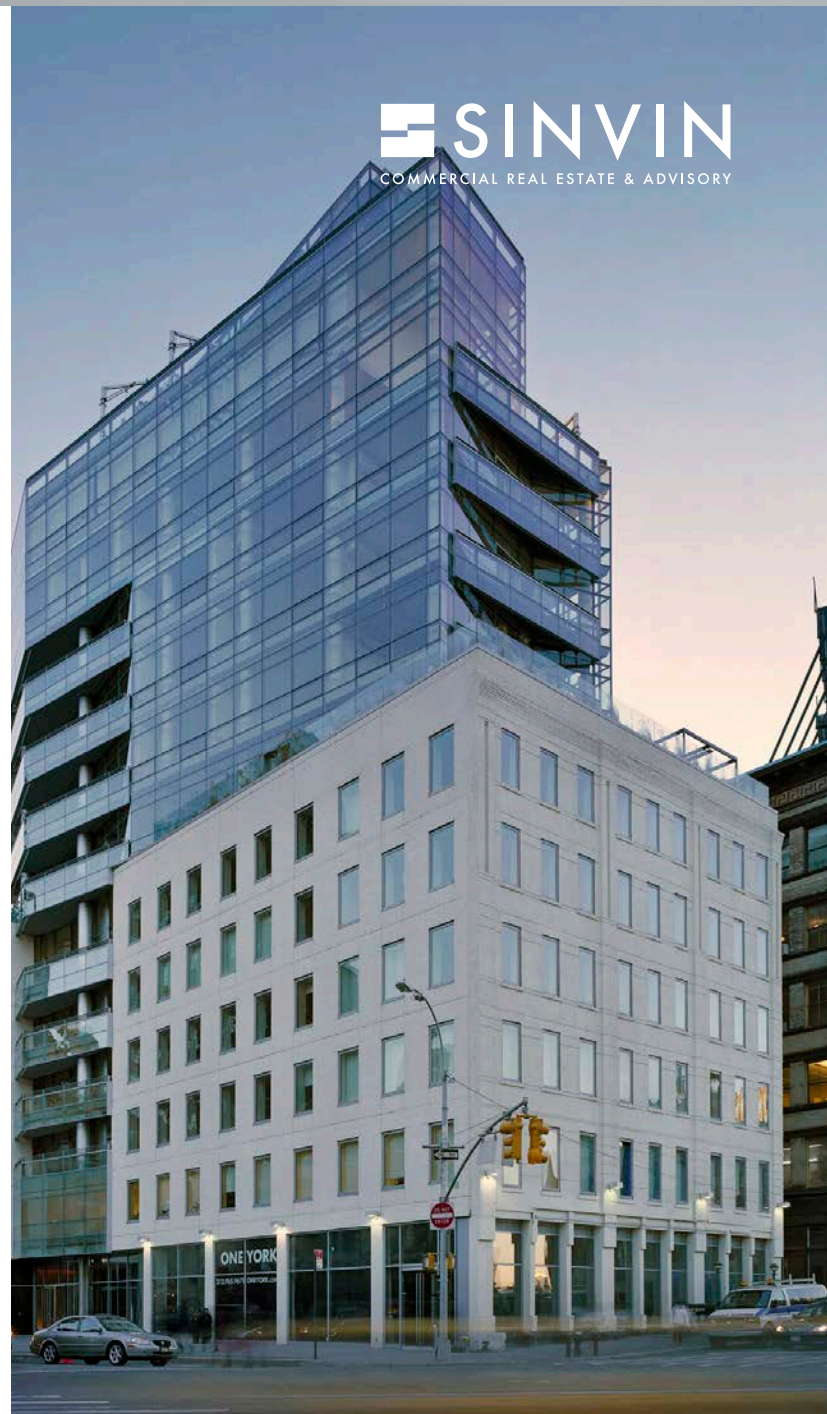
AT THE CORNER OF SIXTH AVE. & LAIGHT ST. | AKA 1 YORK

## DETAILS:

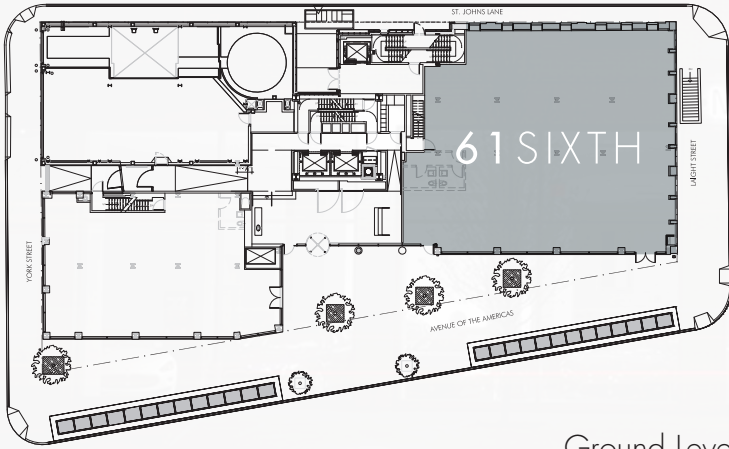
|                     |  |
|---------------------|--|
| Ground Level.....   | <b>4,870 Square Feet</b>                       |
| Lower Level.....    | <b>709 Square Feet</b>                         |
| Frontage.....       | <b>77' on 6th Ave. &amp; 63' on Laight St.</b> |
| Ceiling Height..... | <b>18'</b>                                     |
| Term.....           | <b>Long Term</b>                               |
| Possession.....     | <b>Immediate</b>                               |
| Asking Rent.....    | <b>Please Inquire</b>                          |

## FEATURES:

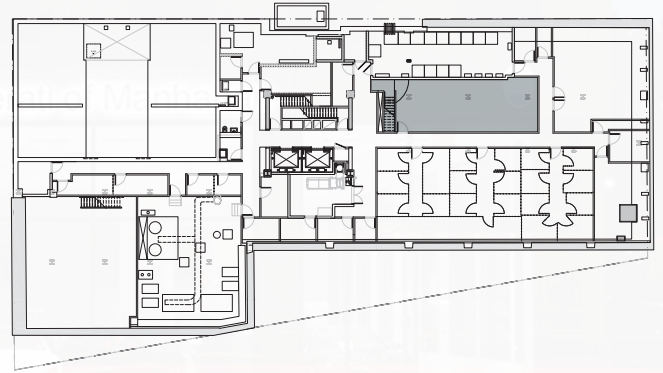
- Prominent presence at the intersection of Tribeca & Soho
- Immaculate white-box condition - Former Maserati showroom
- Expansive floor-to-ceiling corner frontage
- Potential for outdoor space
- Centrally located and adjacent to a subway entrance
- All uses considered
- Located in an iconic residential building designed by Enrique Norten



**SINVIN**  
COMMERCIAL REAL ESTATE & ADVISORY



Ground Level



Lower Level



## NEIGHBORS:

- Barry's Bootcamp
- Spring Studios
- The Roxy Hotel
- Frenchette
- The James Hotel
- Gandaisy Bakery
- The Soho Grand
- Canal Street Oysters

## PLEASE CONTACT:

**Christopher Owles**

212.604.9002 | [chris@sinvin.com](mailto:chris@sinvin.com)

**Elliott Mishan**

646.673.8786 | [elliott@sinvin.com](mailto:elliott@sinvin.com)

**SINVIN**  
COMMERCIAL REAL ESTATE & ADVISORY