

## West Valley @ 216

6411 South 216th Street  
Kent, WA



24,790 SF total

4,081 SF office

Corporate image business park  
in the heart of the Kent Valley

21' - 22' clear height

2 dock-high doors  
2 grade-level doors

Corner unit with abundant  
parking

Call for pricing

### Location



### Contact

**Matt Wood, SIOR**

206.248.7306

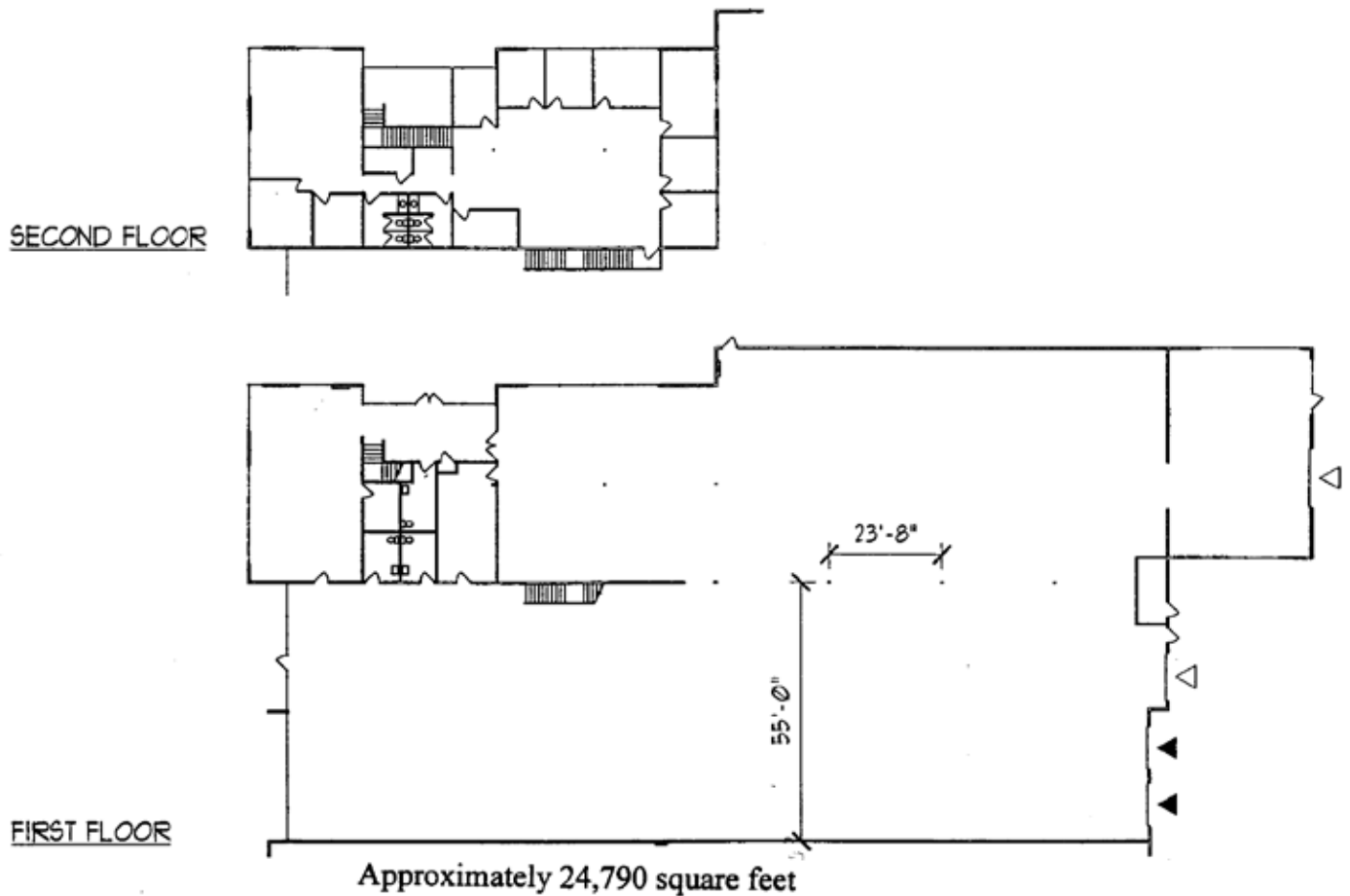
mwood@kiddermathews.com

**Mike Newton**

206.248.7311

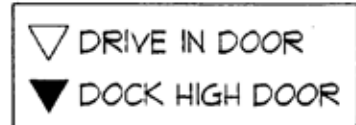
mnewton@kiddermathews.com

## West Valley @ 216



NORTH

**KENT PARK 216**  
6411 S. 216TH STREET  
BUILDING F  
KENT, WASHINGTON



### Contact

**Matt Wood, SIOR**

206.248.7306

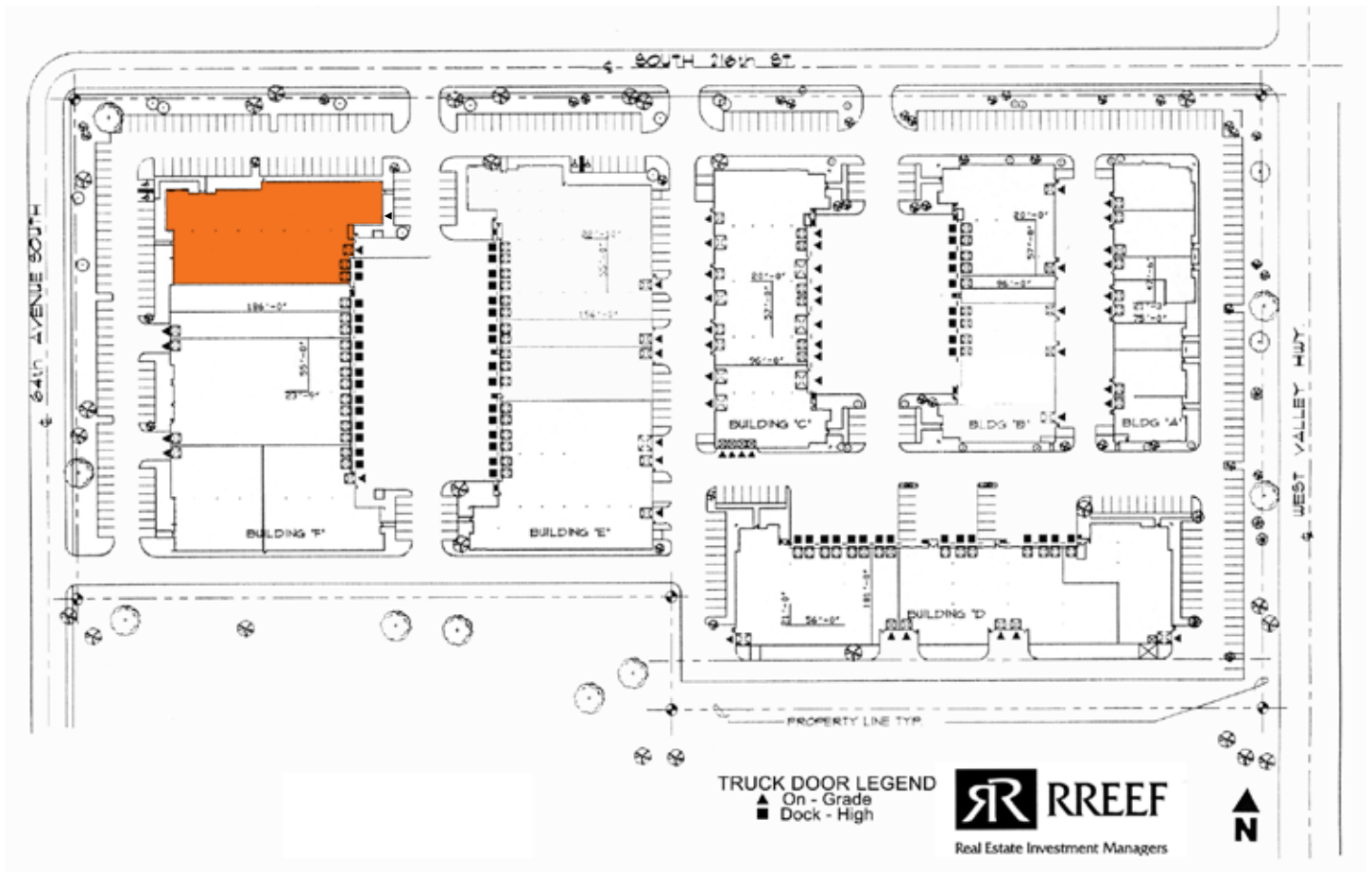
mwood@kiddermathews.com

**Mike Newton**

206.248.7311

mnewton@kiddermathews.com

## West Valley @ 216



### Contact

**Matt Wood, SIOR**

206.248.7306

mwood@kiddermathews.com

**Mike Newton**

206.248.7311

mnewton@kiddermathews.com