

FOR LEASE

KSP Tacoma Buildings

1110-16 Martin Luther King Jr. Way, Tacoma, WA



CONTACT

Will Frame
253.722.1412 | wframe@kiddermathews.com

Benjamin A. Norbe
253.722.1410 | bnorbe@kiddermathews.com



KSP Tacoma Buildings

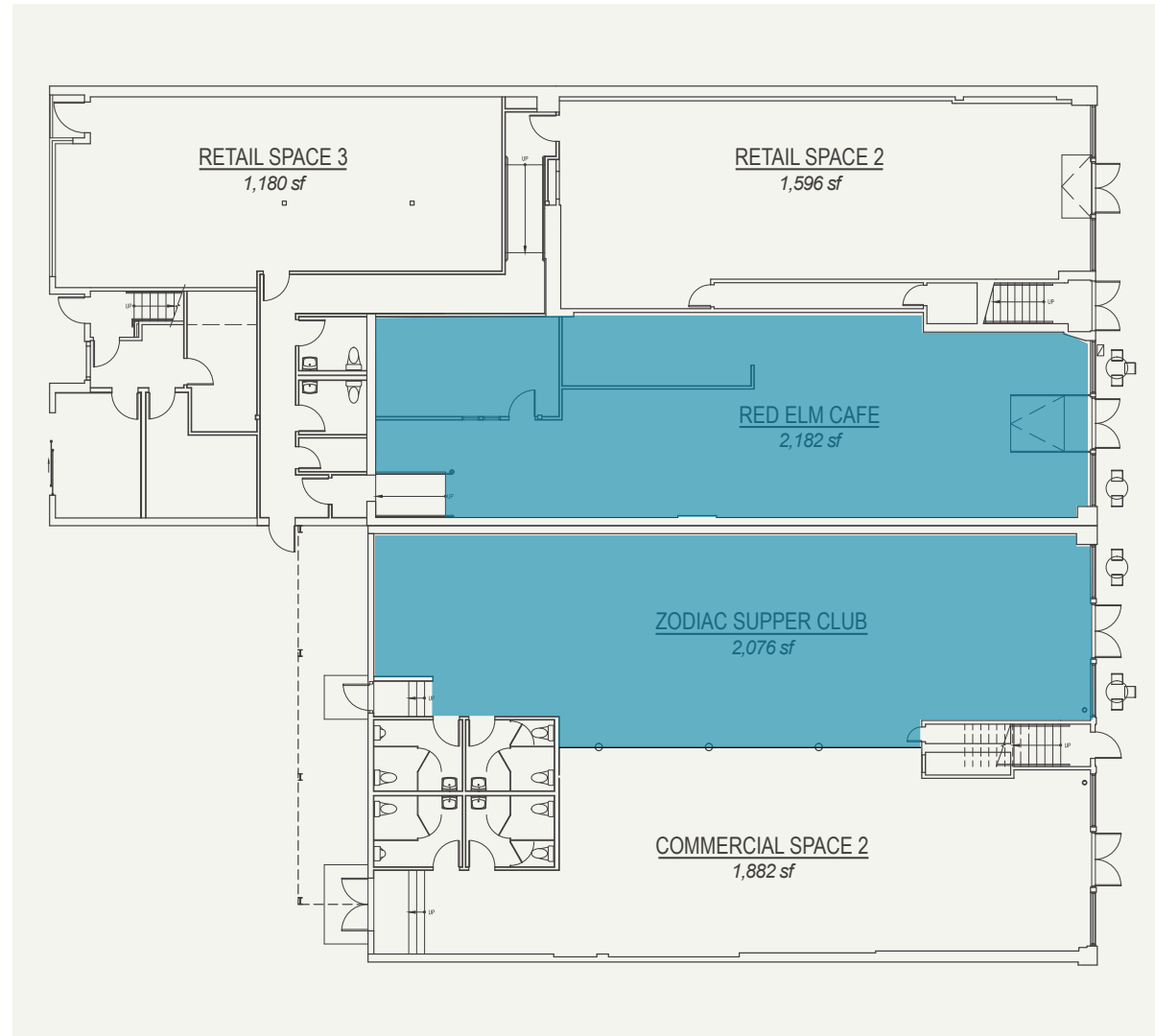
1110-16 Martin Luther King Jr. Way
Tacoma, WA

Features

AVAILABLE	Commercial Space 1 - 1,882 SF Retail Space 2 - 1,596 SF Retail Space 3 - 1,180 SF Retail Space 2 & 3 - 2,776 SF
RATE	\$14.00 PSF, NNN
VISIBILITY	High visibility at main intersection Earnest S Brazill Street & M.L.K. Jr. Way
ZONING	NCX - Neighborhood Commercial Mixed - Use District
RENOVATION	Complete exterior and interior renovation completed in 2017

Demographics

	3 miles	5 miles
Population	184,850	427,337
Average HH	\$71,031	\$75,833



Will Frame
253.722.1412
wframe@kiddermathews.com

Benjamin A. Norbe
253.722.14210
bnorbe@kiddermathews.com

kiddermathews.com



KSP Tacoma Buildings

1110-16 Martin Luther King Jr. Way
Tacoma, WA



Will Frame
253.722.1412
wframe@kiddermathews.com

Benjamin A. Norbe
253.722.14210
bnorbe@kiddermathews.com

kiddermathews.com



This information supplied herein is from sources we deem reliable. It is provided without any representation, warranty or guarantee, expressed or implied as to its accuracy. Prospective Buyer or Tenant should conduct an independent investigation and verification of all matters deemed to be material, including, but not limited to, statements of income and expenses. Consult your attorney, accountant, or other professional advisor.