

# FOR LEASE

# LIFE SCIENCES / BIOTECH SPACE



## 9924 MESA RIM ROAD, SUITE B

SAN DIEGO, CALIFORNIA 92121

### PROPERTY FEATURES

- » ±2,000 SF
- » Brand new improvements
- » Corporate image with 15% office and balance lab
- » Biotech, microbiology and chemistry space
- » Venting in place for fume hood
- » Dedicated tissue culture or lab support room
- » 1 grade level door
- » Gas service available
- » Prime location within minutes of I-805, I-5 and I-15
- » Pride of Ownership property
- » Shipping, receiving and equipment area

**LEASE RATE: \$2.25 PSF NNN**

**YEAR 1 PROMOTIONAL RATE: \$1.99 PSF NNN**

**\*MINIMUM 3 YEAR LEASE TERM**



**CHRIS DUNCAN**, Vice President

**WESTON YAHN**, Senior Associate

4180 La Jolla Village Drive, Suite 100, La Jolla, CA 92037 | 858.453.0505 | 858.408.3976 Fax | Lic #01991785 | [www.voitco.com](http://www.voitco.com)

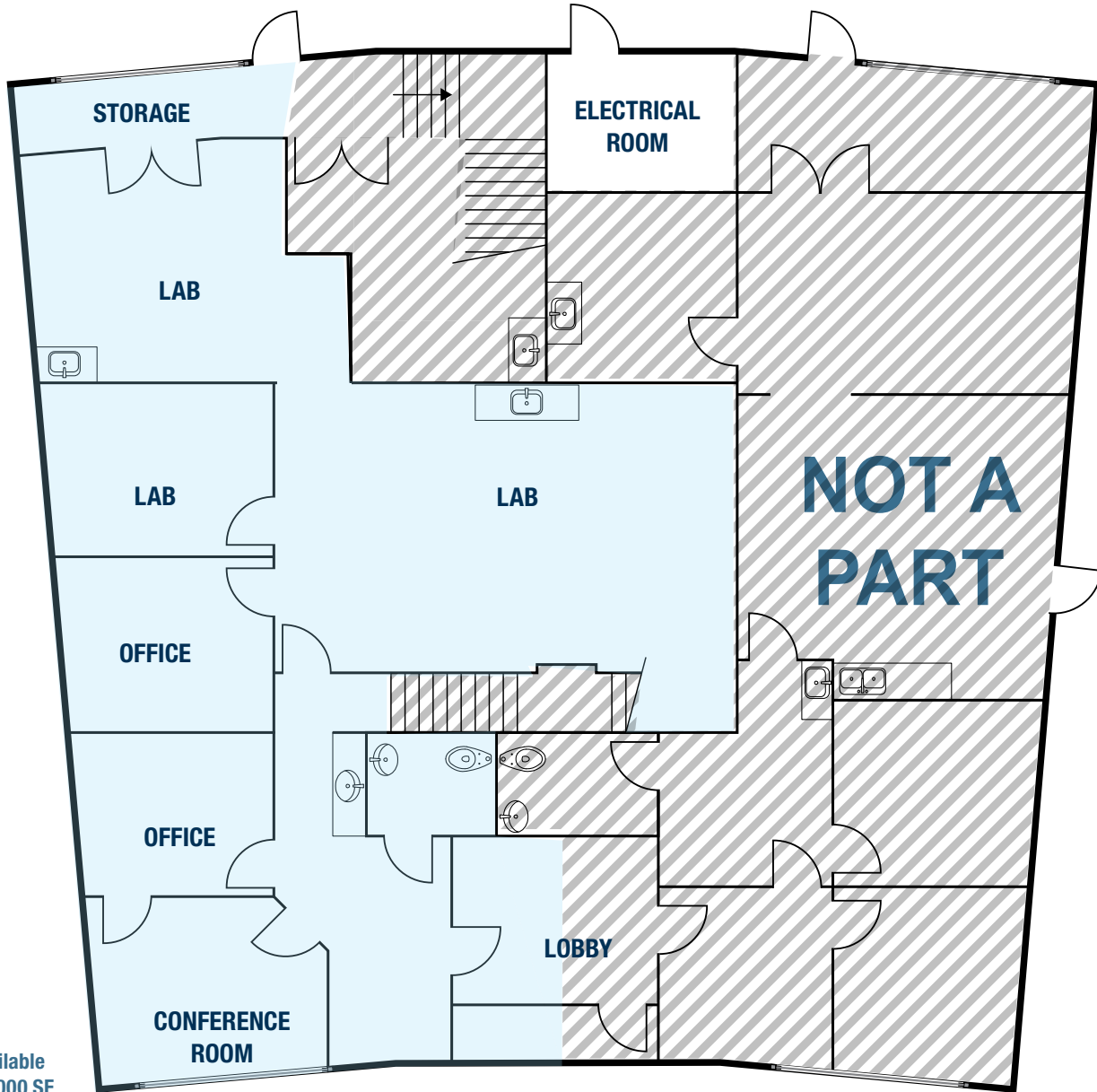
**Voit**  
REAL ESTATE SERVICES

# FOR LEASE

# 9924 MESA RIM ROAD, SUITE B

SAN DIEGO, CALIFORNIA 92121

## FLOOR PLAN



Available  
±2,000 SF



**CHRIS DUNCAN**  
Vice President | 858.458.3307  
cduncan@voitco.com | Lic. #01324067

**WESTON YAHN**  
Senior Associate | 858.458.3321  
wyahn@voitco.com | Lic. #01975469

**Voit**  
REAL ESTATE SERVICES