

FOR LEASE
11,278 SF

9520 FRONT ST S
LAKEWOOD, WA 98499



FEATURES

- 11,278 total SF
- 1,387 SF of office
- 4 dock high doors
- 1 grade-level door
- 28' clear height
- ESRF sprinklers
- Excellent access to I-5 and SR-512
- Available November 15, 2020
- **Shell Rate: \$0.85 SF/Mo**
- **Office Rate: \$1.10 SF/Mo, plus NNN**



EXCLUSIVELY OFFERED BY:

George Rockwell, SIOR
(206) 679-7625
grockwell@andoverco.com

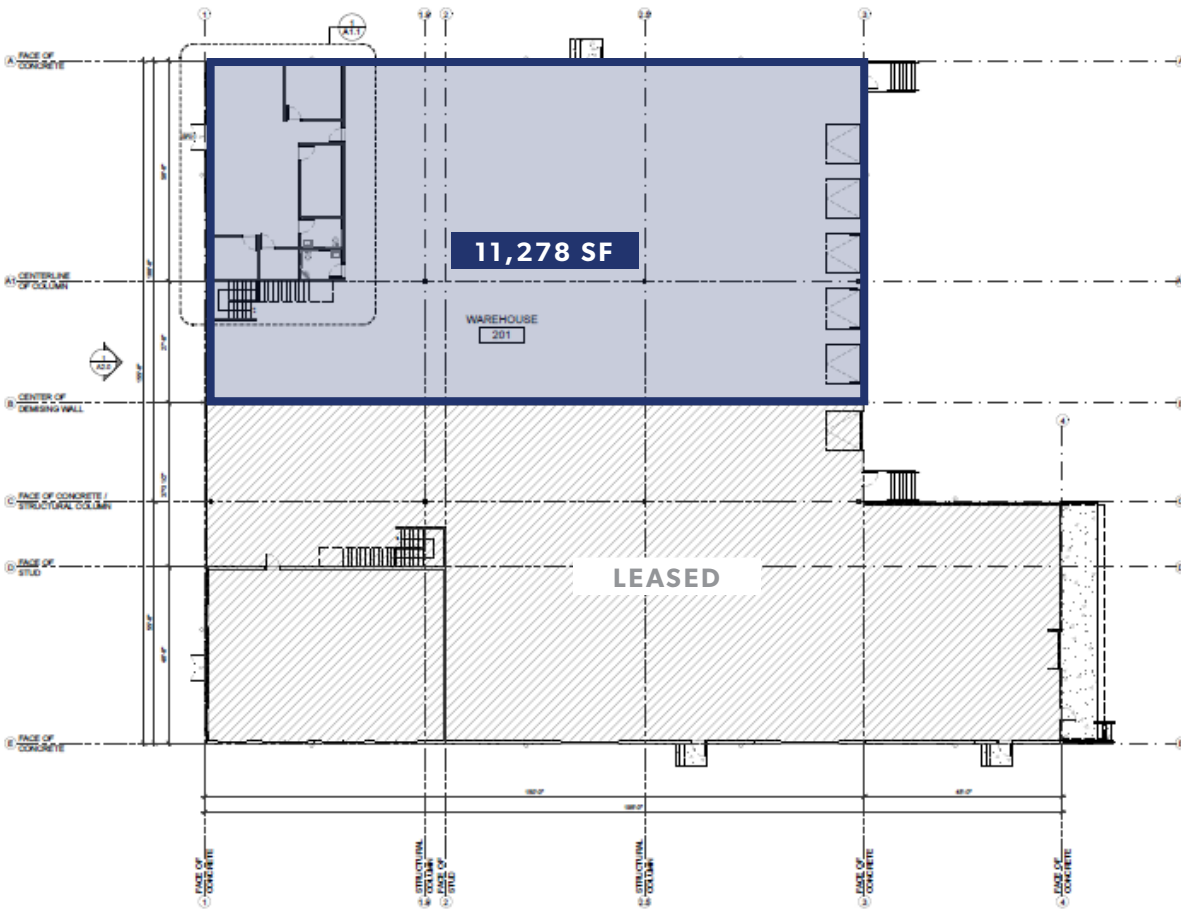


THE ANDOVER COMPANY, INC./CORFAC INTERNATIONAL
900 SW 16th St, Ste 100 | Renton, WA 98057 | (206) 244-0770 | www.andoverco.com

The information contained herein has been obtained from reliable sources, but is not guaranteed. A prospective buyer/tenant should verify each item relating to this property and all information contained herein.

FOR LEASE
11,278 SF

9520 FRONT ST S
LAKEWOOD, WA 98499



1 OVERALL FLOOR PLAN
SCALE: 3/8"=1'-0"



EXCLUSIVELY OFFERED BY:

George Rockwell, SIOR
(206) 679-7625
grockwell@andoverco.com



THE ANDOVER COMPANY, INC./CORFAC INTERNATIONAL
900 SW 16th St, Ste 100 | Renton, WA 98057 | (206) 244-0770 | www.andoverco.com

The information contained herein has been obtained from reliable sources, but is not guaranteed. A prospective buyer/tenant should verify each item relating to this property and all information contained herein.