

FOR LEASE

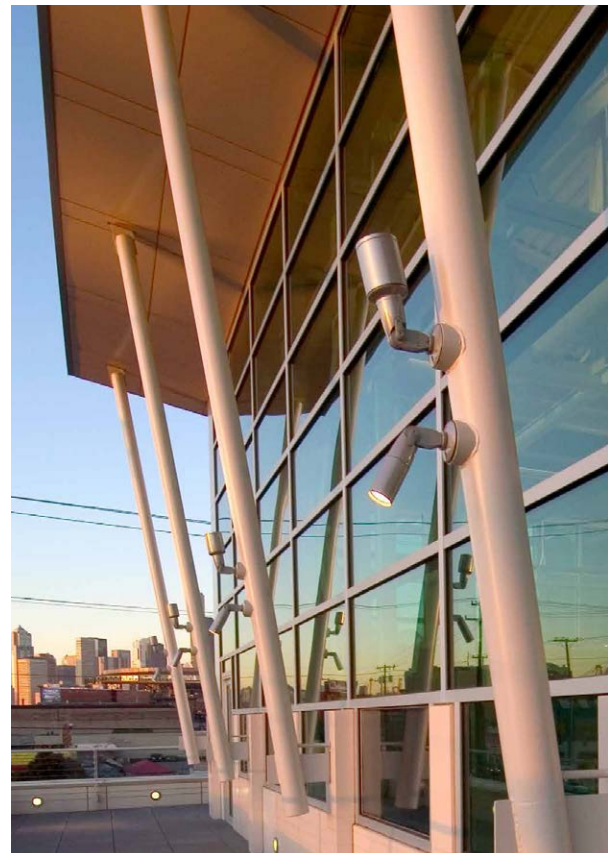
# SODO OFFICE SPACE

1910  
1ST AVENUE SOUTH  
Seattle, WA 98134



## PROPERTY INFORMATION

- + 4,520 RSF available
- + Entire 2nd floor available July 1, 2018
- + High ceilings; flooded with natural light, air conditioned and operable windows
- + Hardwood and terrazzo tile floors
- + Outside deck/patio with natural gas connection for outdoor grill
- + Views to the city looking north
- + Just south of Pioneer Square and the stadiums (CenturyLink and Safeco fields)
- + Available parking (up to 13 surface stalls @ \$125/month)
- + Move-in condition
- + Outstanding freeway access
- + \$40.00/PRSF-FS (excluding janitorial)
- + Exterior building signage available



[www.cbre.us/seattle](http://www.cbre.us/seattle)

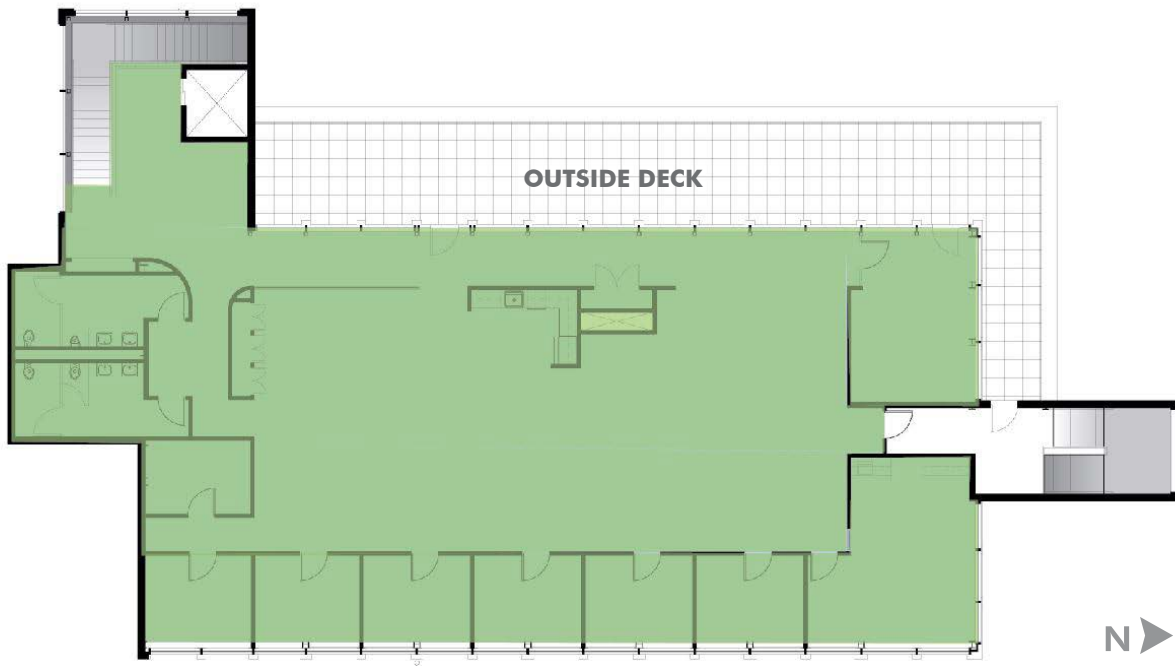
**CBRE**

# FOR LEASE SODO OFFICE SPACE



## FLOOR PLAN

FLOOR 2-4,520 RSF



1910  
**1ST AVENUE SOUTH**  
Seattle, WA 98134

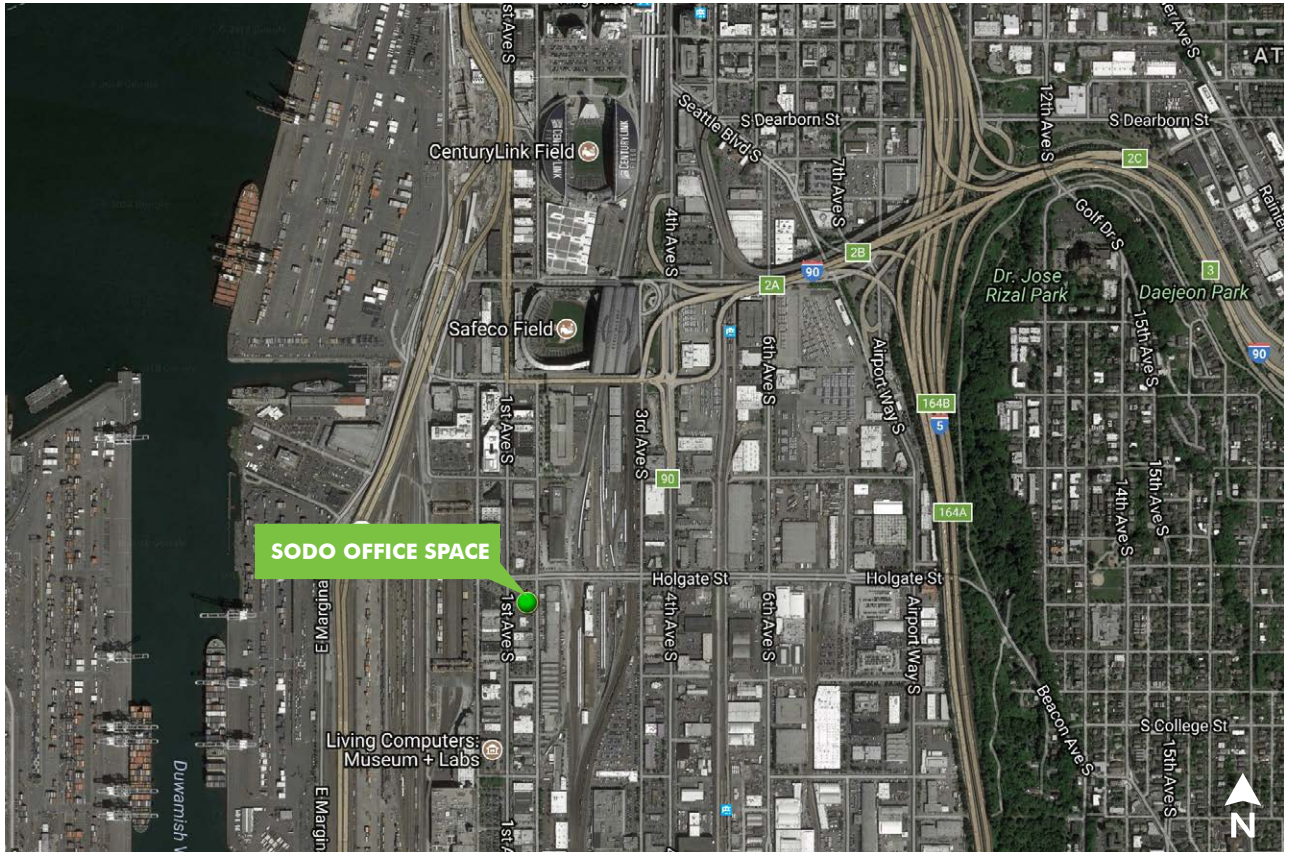


# FOR LEASE SODO OFFICE SPACE

1910  
1ST AVENUE SOUTH  
Seattle, WA 98134



## LOCATION MAP



## CONTACT US

**DAN STUTZ**  
+1 206 292 6097  
dan.stutz@cbre.com

**EVAN STEINRUCK**  
+1 206 292 6022  
evan.steinruck@cbre.com

CBRE, Inc.  
1420 5th Ave, Suite 1700  
Seattle, WA 98101

© 2018 CBRE, Inc. All rights reserved. This information has been obtained from sources believed reliable, but has not been verified for accuracy or completeness. You should conduct a careful, independent investigation of the property and verify all information. Any reliance on this information is solely at your own risk. CBRE and the CBRE logo are service marks of CBRE, Inc. All other marks displayed on this document are the property of their respective owners. Photos herein are the property of their respective owners. Use of these images without the express written consent of the owner is prohibited. Amf 082118

[www.cbre.us/seattle](http://www.cbre.us/seattle)

**CBRE**