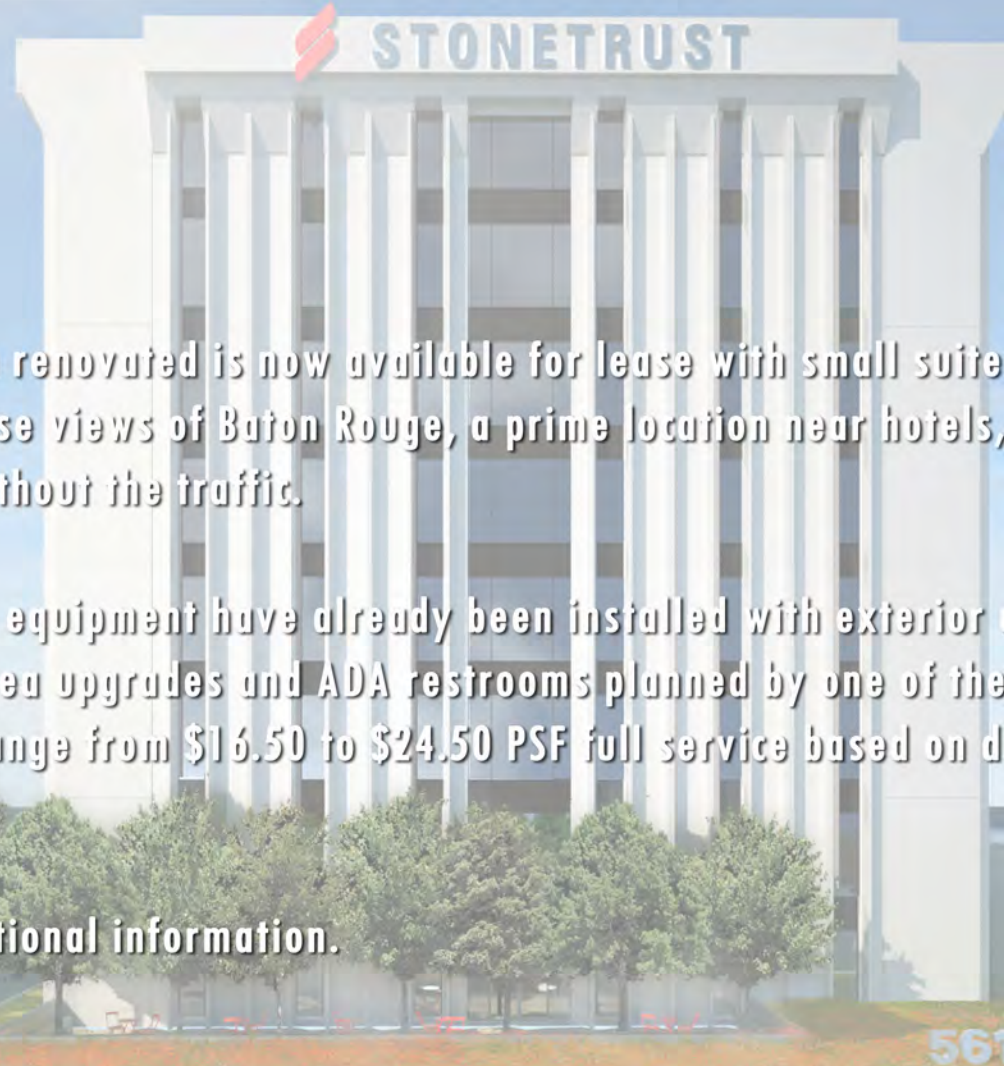


# FOR LEASE

5615 CORPORATE BLVD  
BATON ROUGE, LA 70808

## STONETRUST CENTER



Stonetrust Center, soon to be renovated is now available for lease with small suites to full floors available. Fantastic penthouse views of Baton Rouge, a prime location near hotels, restaurants, LSU and convenient to the CBD without the traffic.

New elevators and operating equipment have already been installed with exterior upgrades, total lobby renovation, common area upgrades and ADA restrooms planned by one of the area's leading architectural firms. Rates range from \$16.50 to \$24.50 PSF full service based on delivery condition.

Contact George Kurz for additional information.



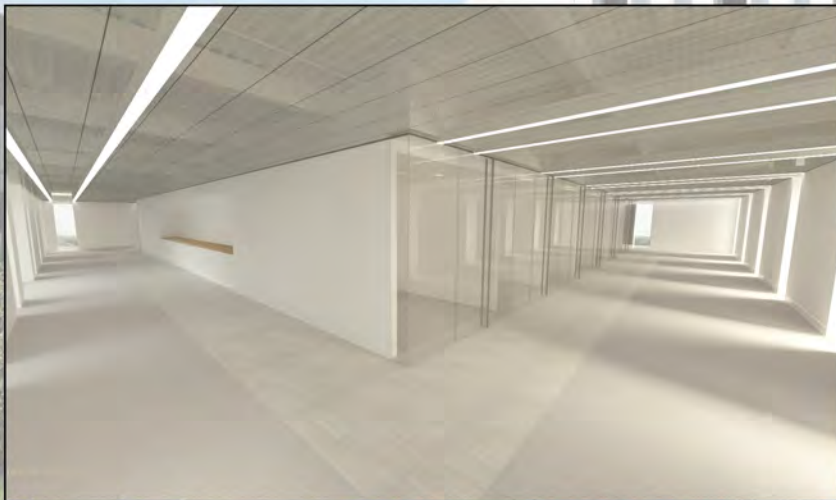
P.O. Box 80301 | Baton Rouge, LA | 225.925.0600 | [george@kurzhebert.com](mailto:george@kurzhebert.com) | [www.kurzhebert.com](http://www.kurzhebert.com)

All information herein is believed to be accurate, but is not warranted and no liability of errors or omissions is assumed by either the property owner or Kurz & Hebert Commercial Real Estate, Inc. and/or its agents and employees. Prices as stated herein and property availability are subject to change and/or sale or lease without prior notice, and all sizes and dimensions are subject to corrections.

# FOR LEASE

5615 CORPORATE BLVD  
BATON ROUGE, LA 70808

RENOVATIONS UNDERWAY



P.O. Box 80301 | Baton Rouge, LA | 225.925.0600 | [george@kurzhebert.com](mailto:george@kurzhebert.com) | [www.kurzhebert.com](http://www.kurzhebert.com)

All information herein is believed to be accurate, but is not warranted and no liability of errors or omissions is assumed by either the property owner or Kurz & Hebert Commercial Real Estate, Inc. and/or its agents and employees. Prices as stated herein and property availability are subject to change and/or sale or lease without prior notice, and all sizes and dimensions are subject to corrections.

# FOR LEASE

5615 CORPORATE BLVD  
BATON ROUGE, LA 70808

RENOVATIONS UNDERWAY

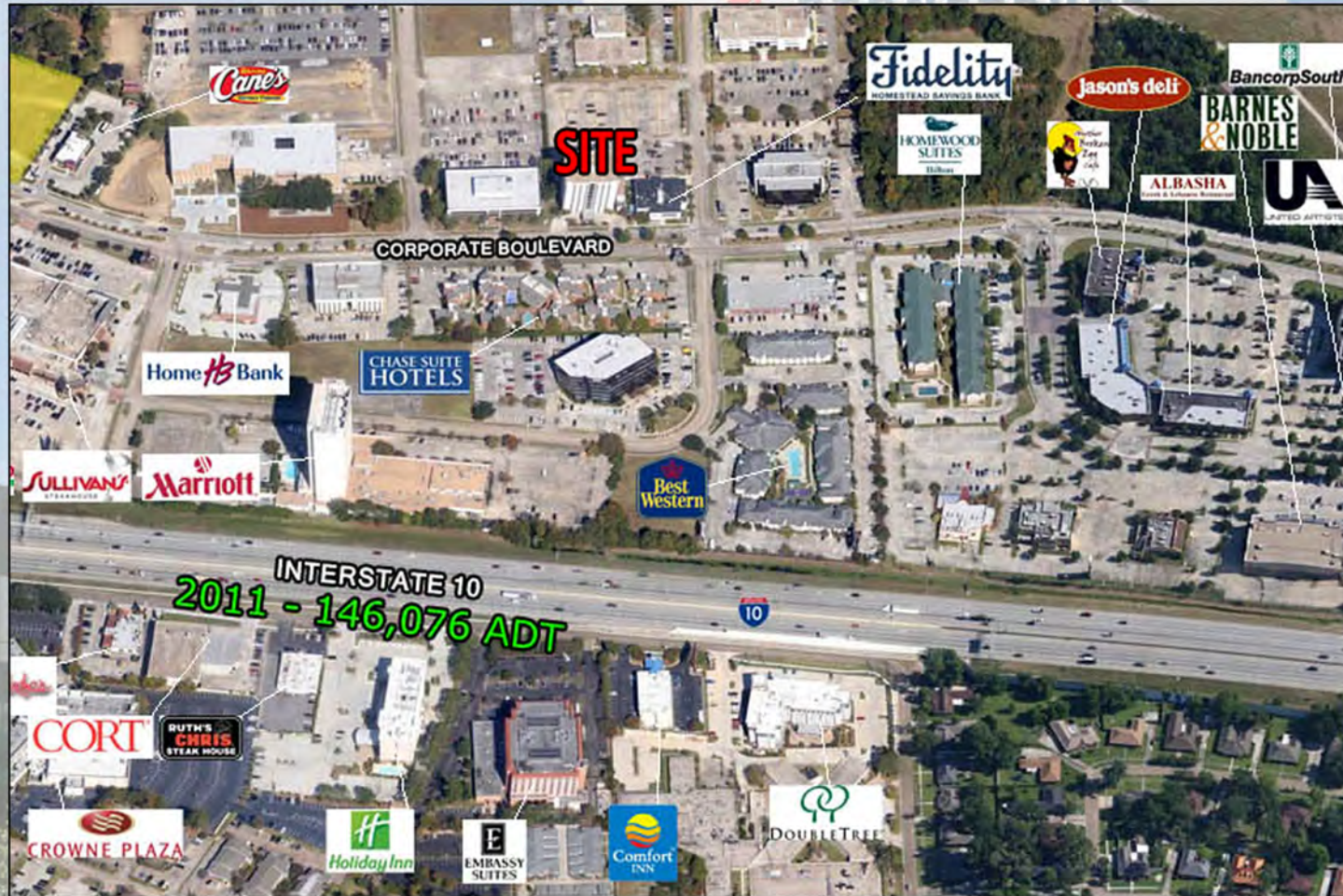


P.O. Box 80301 | Baton Rouge, LA | 225.925.0600 | [george@kurzhebert.com](mailto:george@kurzhebert.com) | [www.kurzhebert.com](http://www.kurzhebert.com)

All information herein is believed to be accurate, but is not warranted and no liability of errors or omissions is assumed by either the property owner or Kurz & Hebert Commercial Real Estate, Inc. and/or its agents and employees. Prices as stated herein and property availability are subject to change and/or sale or lease without prior notice, and all sizes and dimensions are subject to corrections.

# FOR LEASE

5615 CORPORATE BLVD  
BATON ROUGE, LA 70808



Kurz & Hebert  
COMMERCIAL  
REAL ESTATE, INC.  
225-925-0600

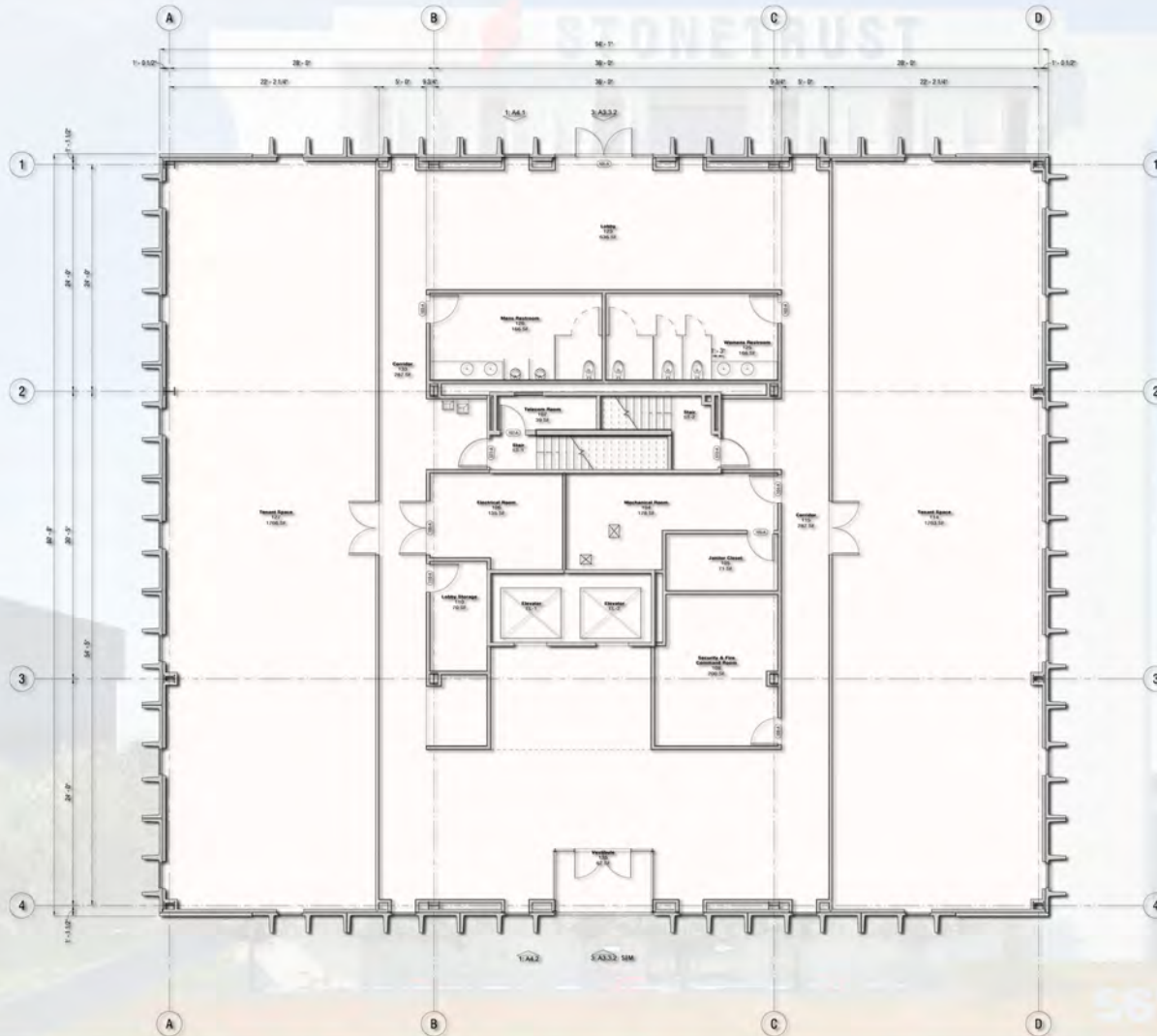
P.O. Box 80301 | Baton Rouge, LA | 225.925.0600 | [george@kurzhebert.com](mailto:george@kurzhebert.com) | [www.kurzhebert.com](http://www.kurzhebert.com)

All information herein is believed to be accurate, but is not warranted and no liability of errors or omissions is assumed by either the property owner or Kurz & Hebert Commercial Real Estate, Inc. and/or its agents and employees. Prices as stated herein and property availability are subject to change and/or sale or lease without prior notice, and all sizes and dimensions are subject to corrections.

# FOR LEASE

5615 CORPORATE BLVD  
BATON ROUGE, LA 70808

FLOOR 1



P.O. Box 80301 | Baton Rouge, LA | 225.925.0600 | [george@kurzhebert.com](mailto:george@kurzhebert.com) | [www.kurzhebert.com](http://www.kurzhebert.com)

All information herein is believed to be accurate, but is not warranted and no liability of errors or omissions is assumed by either the property owner or Kurz & Hebert Commercial Real Estate, Inc. and/or its agents and employees. Prices as stated herein and property availability are subject to change and/or sale or lease without prior notice, and all sizes and dimensions are subject to corrections.

# FOR LEASE

5615 CORPORATE BLVD  
BATON ROUGE, LA 70808

FLOOR 2



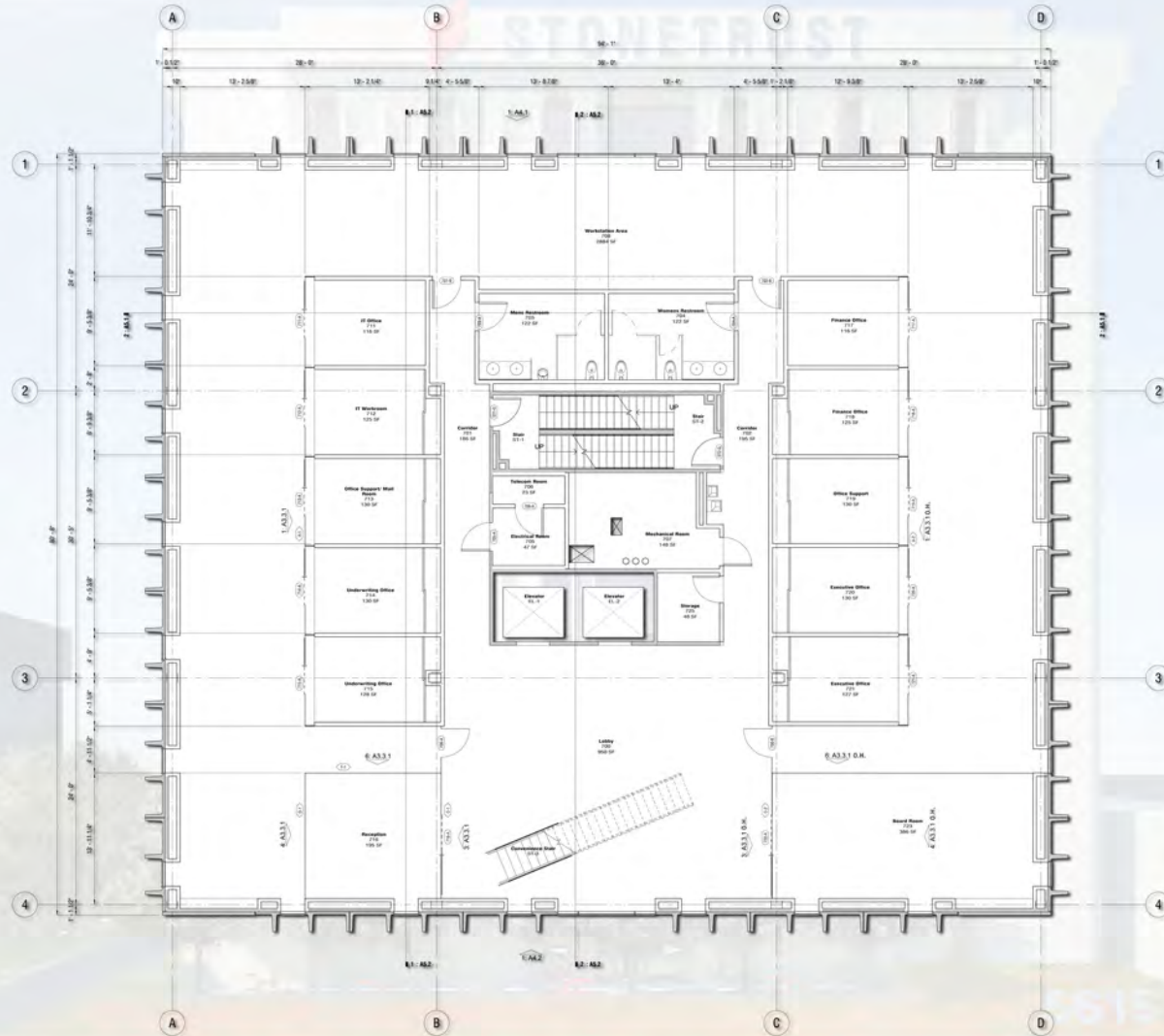
P.O. Box 80301 | Baton Rouge, LA | 225.925.0600 | [george@kurzhebert.com](mailto:george@kurzhebert.com) | [www.kurzhebert.com](http://www.kurzhebert.com)

All information herein is believed to be accurate, but is not warranted and no liability of errors or omissions is assumed by either the property owner or Kurz & Hebert Commercial Real Estate, Inc. and/or its agents and employees. Prices as stated herein and property availability are subject to change and/or sale or lease without prior notice, and all sizes and dimensions are subject to corrections.

# FOR LEASE

5615 CORPORATE BLVD  
BATON ROUGE, LA 70808

FLOOR 3



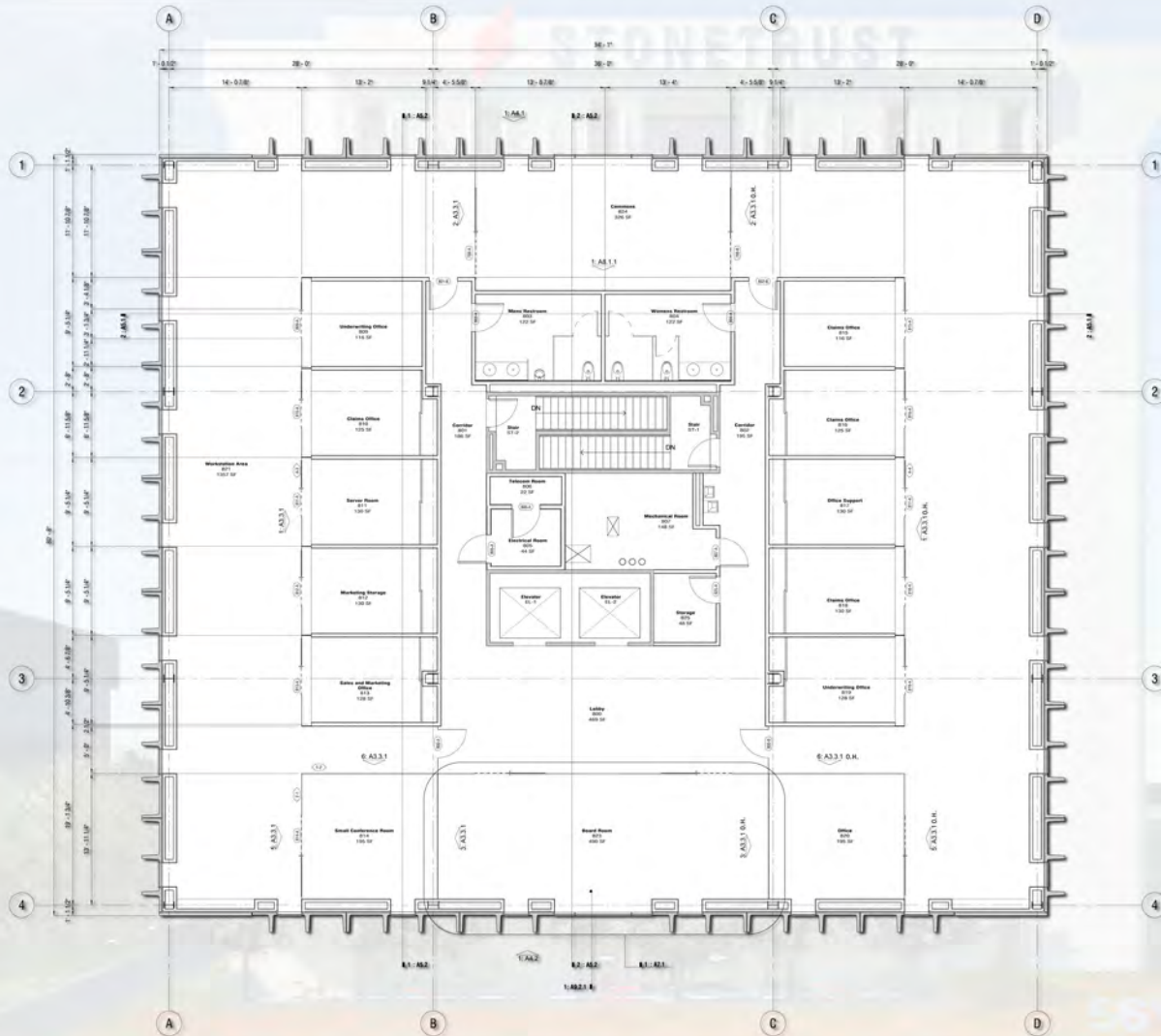
P.O. Box 80301 | Baton Rouge, LA | 225.925.0600 | [george@kurzhebert.com](mailto:george@kurzhebert.com) | [www.kurzhebert.com](http://www.kurzhebert.com)

All information herein is believed to be accurate, but is not warranted and no liability of errors or omissions is assumed by either the property owner or Kurz & Hebert Commercial Real Estate, Inc. and/or its agents and employees. Prices as stated herein and property availability are subject to change and/or sale or lease without prior notice, and all sizes and dimensions are subject to corrections.

# FOR LEASE

5615 CORPORATE BLVD  
BATON ROUGE, LA 70808

FLOOR 4



P.O. Box 80301 | Baton Rouge, LA | 225.925.0600 | [george@kurzhebert.com](mailto:george@kurzhebert.com) | [www.kurzhebert.com](http://www.kurzhebert.com)

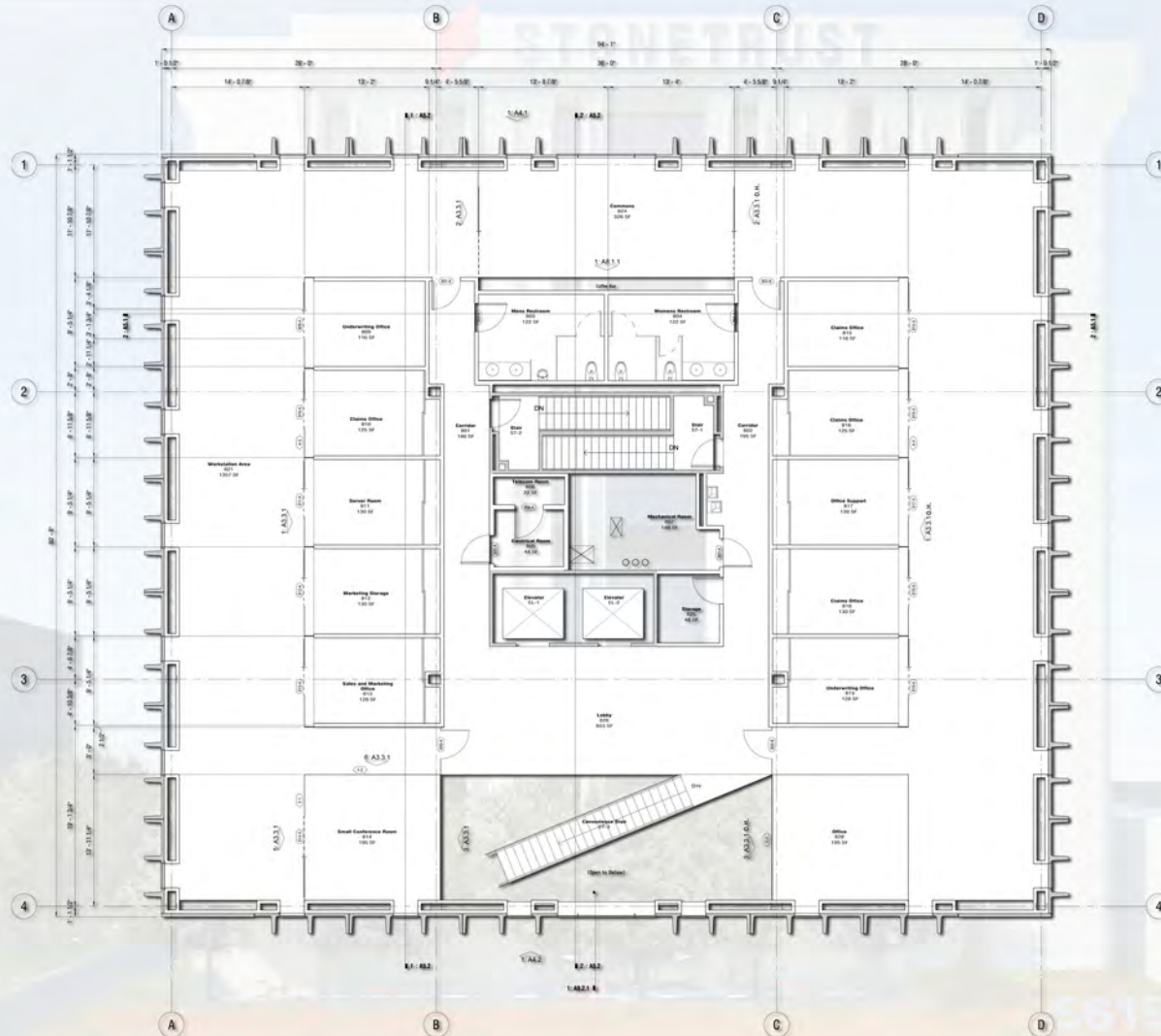
All information herein is believed to be accurate, but is not warranted and no liability of errors or omissions is assumed by either the property owner or Kurz & Hebert Commercial Real Estate, Inc. and/or its agents and employees. Prices as stated herein and property availability are subject to change and/or sale or lease without prior notice, and all sizes and dimensions are subject to corrections.



# FOR LEASE

5615 CORPORATE BLVD  
BATON ROUGE, LA 70808

FLOOR 5



P.O. Box 80301 | Baton Rouge, LA | 225.925.0600 | [george@kurzhebert.com](mailto:george@kurzhebert.com) | [www.kurzhebert.com](http://www.kurzhebert.com)

All information herein is believed to be accurate, but is not warranted and no liability of errors or omissions is assumed by either the property owner or Kurz & Hebert Commercial Real Estate, Inc. and/or its agents and employees. Prices as stated herein and property availability are subject to change and/or sale or lease without prior notice, and all sizes and dimensions are subject to corrections.