

~ Commercial Property for Lease ~

## Northrock Business Park

8200 E. 34th St. N.

Building #1800, Suite 1807

Wichita, Kansas



### features

- 2,025 sq. ft.
- Recept. area
- 2 offices
- Large open cubicle area
- Optional rear dbl. doors or o/h door
- \$2,500 per month (includes utilities)



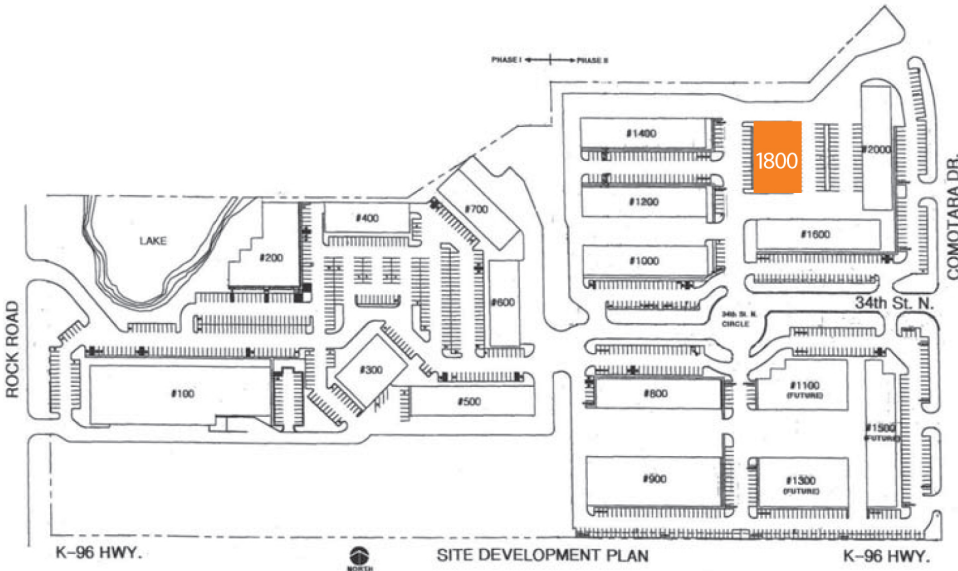
For information,  
please contact Ross Way  
**(316) 681-1711**  
or visit [www.amcwichita.com](http://www.amcwichita.com)



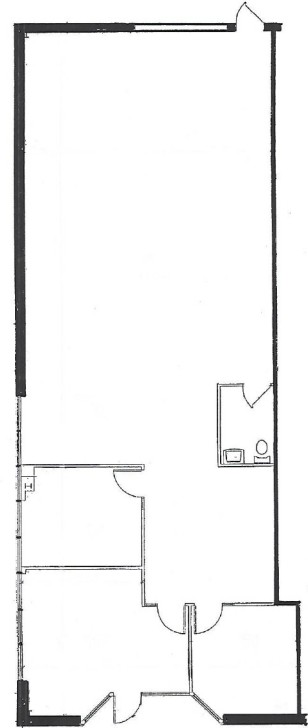
# ANDERSON MANAGEMENT CO.

3450 N. Rock Road #201  
Wichita, KS 67226  
Phone: (316) 681-1711  
Fax: (316) 681-3127  
www.amcwichita.com

## site plan



Northrock Business Park  
Master Site Plan



Suite 1807  
Floor Plan

## location

Northrock Business Park  
8200 E. 34th St. N.  
Building #1800, Suite 1807  
Wichita, Kansas 67226



## contact

Ross Way  
ross@amcwichita.com  
(316) 681-1711  
or visit www.amcwichita.com