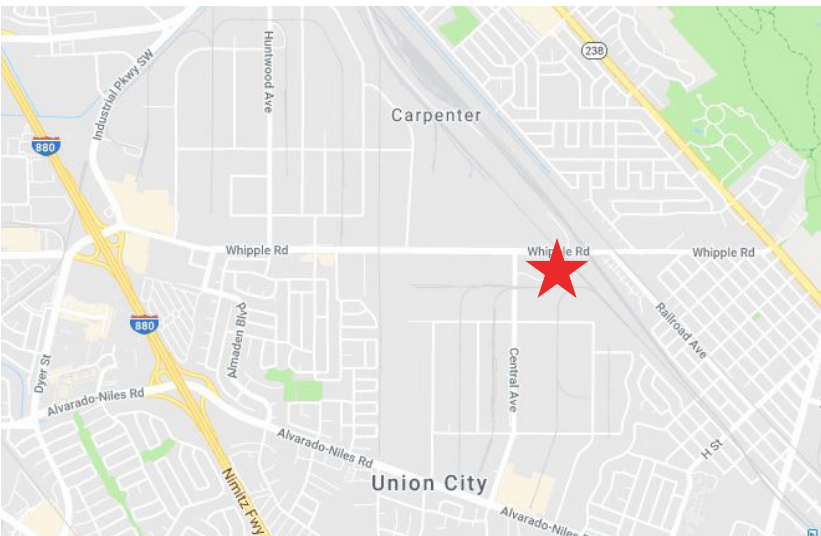


# FOR SALE: 32420 Central Avenue – Union City



**Property Size: ±27,450 SF on ±1.48 Acres**

As exclusive agents, we are pleased to offer the following space:



## LOCATION HIGHLIGHTS:

- ±27,450 SF on ±1.48 Acres
- ±2,438 SF of Office
- Clear Span Building (±60' x ±400')
- ±22' Clear Height
- ±800 Amps, 480 Volts (please verify)
- 3 Grade-Level Doors
- Light Industrial (ML) Zoning
- Ample Natural Light
- Yard Space!

## COMMENTS:

- Please Do Not Disturb Occupant!  
Must Have Appointment to Tour
- 32430 Central Avenue also Available for Sale

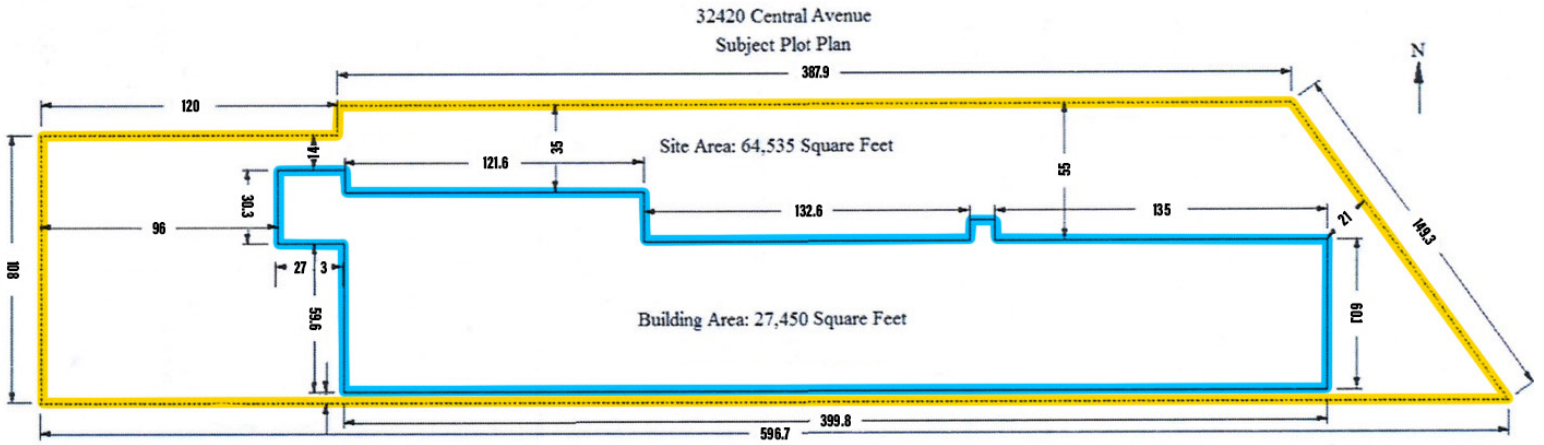
**Paul Mueller** 510.300.0216 [pmueller@ngkf.com](mailto:pmueller@ngkf.com) CA RE Lic. #00896726  
**Dan Dowd, SIOR** 510.300.0223 [ddowd@ngkf.com](mailto:ddowd@ngkf.com) CA RE Lic. #01432679  
**Spencer Jenkins** 510.300.0350 [sjenkins@ngkf.com](mailto:sjenkins@ngkf.com) CA RE Lic. #02029699



1111 Broadway, Suite 100, Oakland, CA 94607

[www.ngkf.com](http://www.ngkf.com)

# FOR SALE: 32420 Central Avenue – Union City



**Paul Mueller** 510.300.0216 [pmueller@ngkf.com](mailto:pmueller@ngkf.com) CA RE Lic. #00896726

**Dan Dowd, SIOR** 510.300.0223 [ddowd@ngkf.com](mailto:ddowd@ngkf.com) CA RE Lic. #01432679

**Spencer Jenkins** 510.300.0350 [sjenkins@ngkf.com](mailto:sjenkins@ngkf.com) CA RE Lic. #02029699



1111 Broadway, Suite 100, Oakland, CA 94607

[www.ngkf.com](http://www.ngkf.com)