

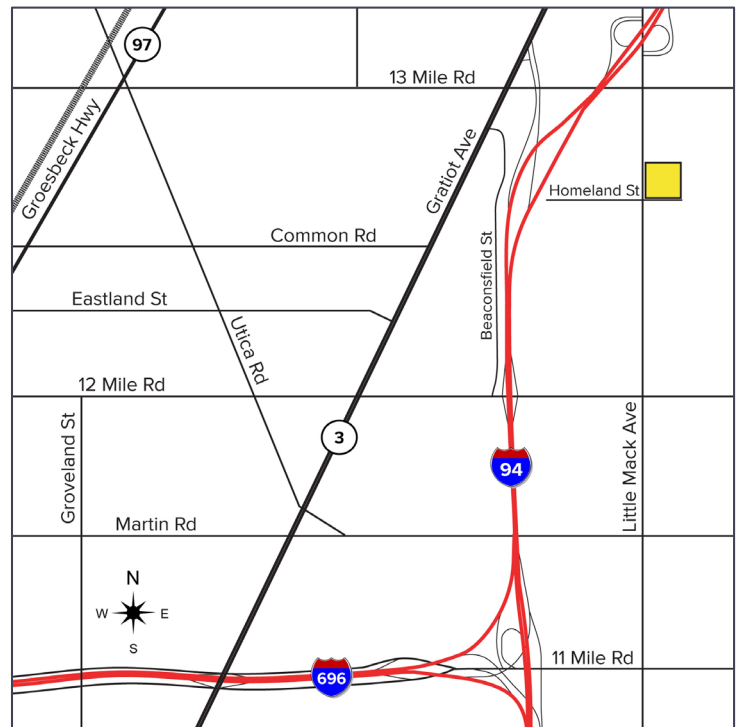
# FORMER ART VAN WAREHOUSE – FOR SALE / LEASE



**30450-30500 LITTLE MACK AVE. | ROSEVILLE, MI**

## PROPERTY FEATURES

- 129,021 available square feet for sale or lease
- 3,773 square feet of office
- 16' – 20' clear height
- (3) 12x14 grade level doors, (15) truckwells
- Situated on 6.12 acres
- Zoned Industrial Improved
- 800 amps, 240 volts power
- 130 parking spaces
- Very clean distribution building!
- Lease Rate: \$4.25/sq.ft. NNN
- Sale Price: \$5,950,000 (\$46.12/sq.ft.)



For more information, please contact:

**JOE HAMWAY**  
(248) 948 0113

[jhamway@signatureassociates.com](mailto:jhamway@signatureassociates.com)

**GREG HUDAS**  
(248) 799 3162

[ghudas@signatureassociates.com](mailto:ghudas@signatureassociates.com)



**SIGNATURE  
ASSOCIATES**  
KNOW SIGNATURE | KNOW RESULTS



30450-30500 Little Mack Ave. – Roseville, MI  
Former Art Van Warehouse - For Sale or Lease

129,021  
Square Feet  
AVAILABLE



For more information, please contact:

**JOE HAMWAY**  
(248) 948 0113

[jhamway@signatureassociates.com](mailto:jhamway@signatureassociates.com)

**GREG HUDAS**  
(248) 799 3162

[ghudas@signatureassociates.com](mailto:ghudas@signatureassociates.com)

**SIGNATURE ASSOCIATES**  
One Towne Square, Suite 1200  
Southfield, MI 48076  
[www.signatureassociates.com](http://www.signatureassociates.com)



# 30450-30500 Little Mack Ave. – Roseville, MI

Former Art Van Warehouse - For Sale or Lease

129,021  
Square Feet  
AVAILABLE



For more information, please contact:

**JOE HAMWAY**  
(248) 948 0113

[jhamway@signatureassociates.com](mailto:jhamway@signatureassociates.com)

**GREG HUDAS**  
(248) 799 3162

[ghudas@signatureassociates.com](mailto:ghudas@signatureassociates.com)

**SIGNATURE ASSOCIATES**

One Towne Square, Suite 1200  
Southfield, MI 48076

[www.signatureassociates.com](http://www.signatureassociates.com)

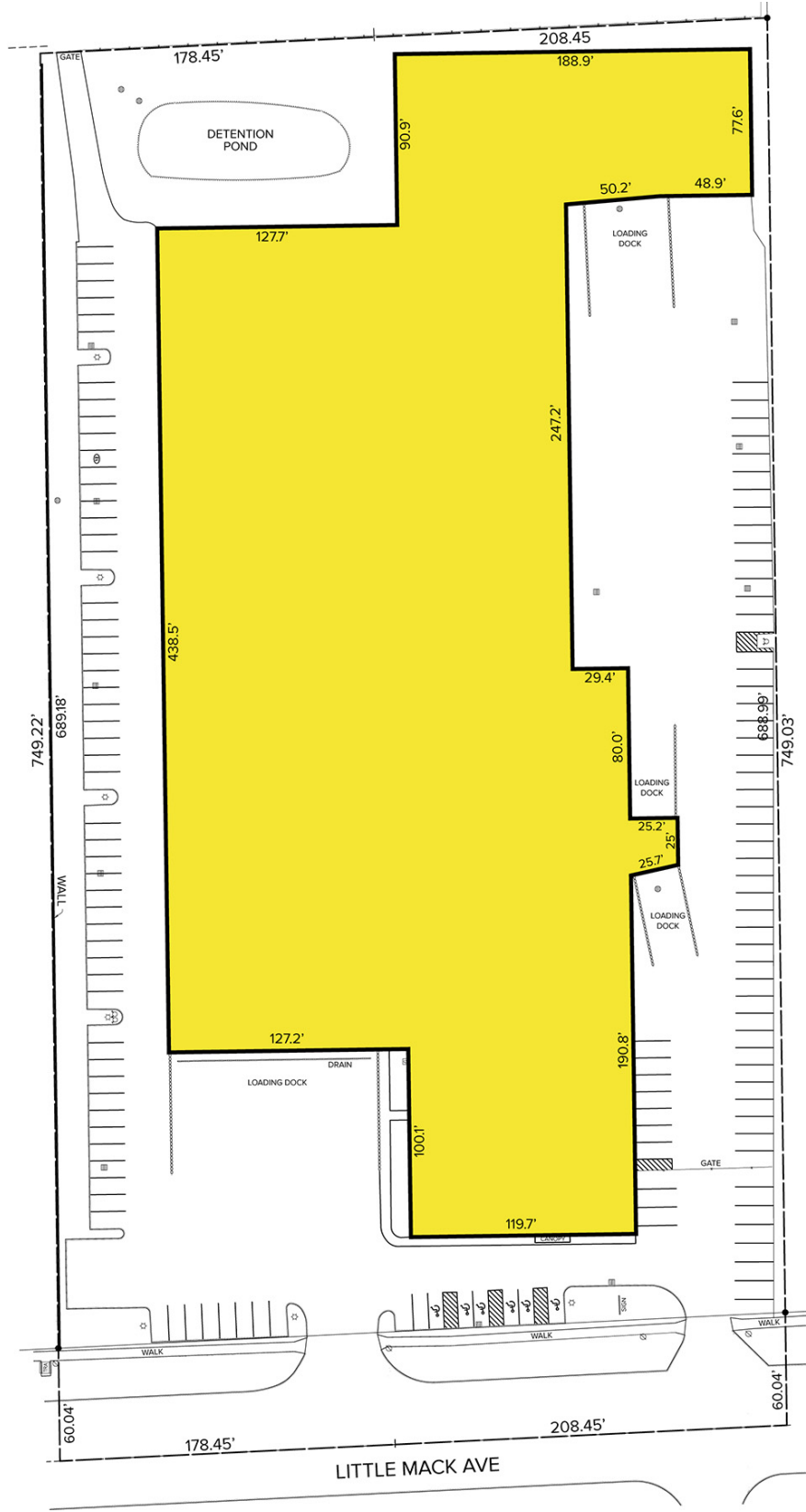


# 30450-30500 Little Mack Ave. – Roseville, MI

Former Art Van Warehouse - For Sale or Lease

129,021  
Square Feet  
AVAILABLE

## Site Plan



For more information, please contact:

**JOE HAMWAY**  
(248) 948 0113

[jhamway@signatureassociates.com](mailto:jhamway@signatureassociates.com)

**GREG HUDAS**  
(248) 799 3162

[ghudas@signatureassociates.com](mailto:ghudas@signatureassociates.com)

**SIGNATURE ASSOCIATES**  
One Towne Square, Suite 1200  
Southfield, MI 48076  
[www.signatureassociates.com](http://www.signatureassociates.com)