

# HARLEM & ARCHER - SUMMIT, IL



**2000**  
Square feet  
Available



Signalized  
intersection



**550+'**  
Total  
frontage



**\$55K**  
Household income in a  
three-mile radius



**48.9K**  
Daytime population in a  
three-mile radius



**74K**  
Vehicles per day at  
intersection

## New Construction Drive-Thru Available at Harlem & Archer



Conceptual Rendering

### PROPERTY DESCRIPTION

- Corner property with great frontage to Harlem and Archer;
- Huge traffic counts minutes from Midway.

### AVAILABLE RETAIL SPACE

- 2,000 sf Drive-Thru or 3,012 sf Building

### TRAFFIC COUNTS

45,000 VPD on Harlem Avenue  
29,000 VPD on Archer Avenue

### AREA RETAILERS



### DEMOGRAPHICS

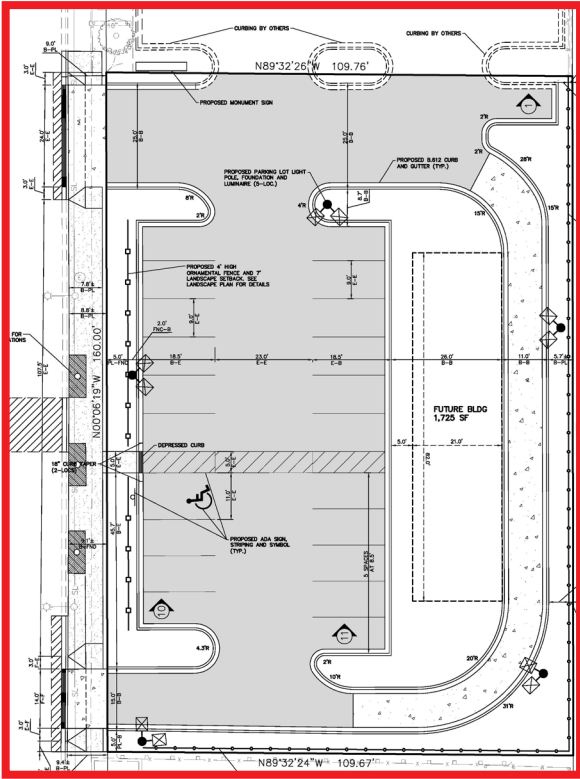
	1 MILE	2 MILE	3 MILE
POPULATION	19,895	59,613	121,521
MEDIAN HH INCOME	\$55,117	\$55,086	\$55,006
DAYTIME POPULATION	7,369	22,115	48,965

EXCLUSIVE AGENT

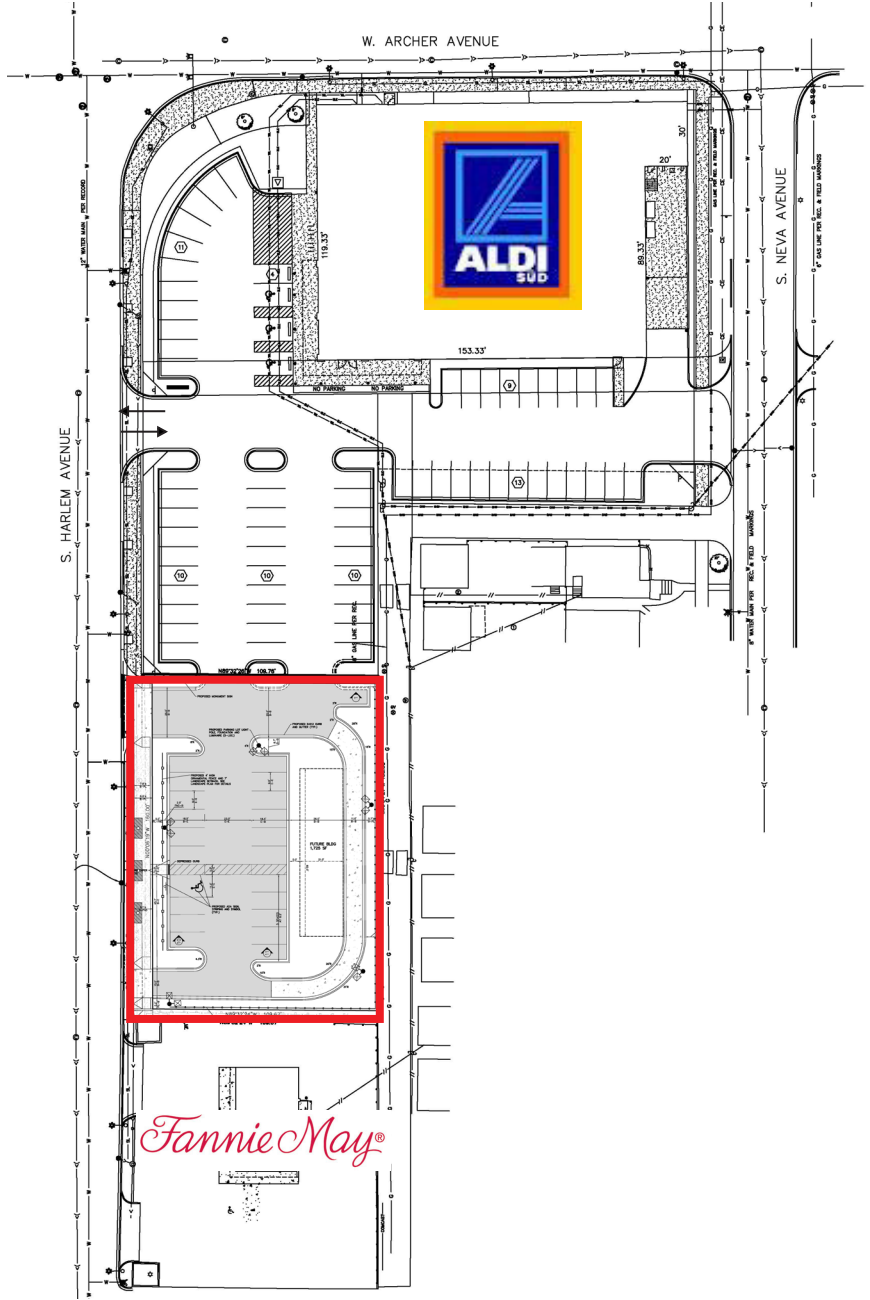
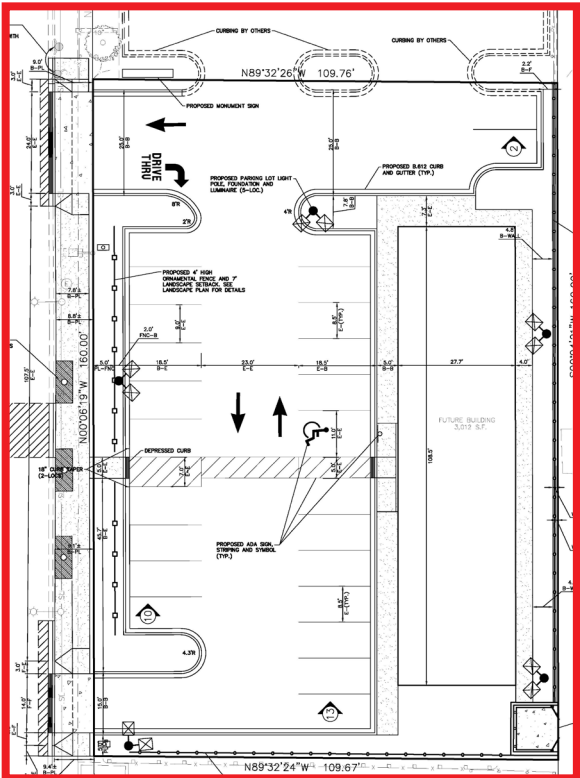
Jason Gustaveson 312/372-2688  
jason@stonerealestate.com

# HARLEM & ARCHER - SUMMIT, IL

## OPTION A



## OPTION B



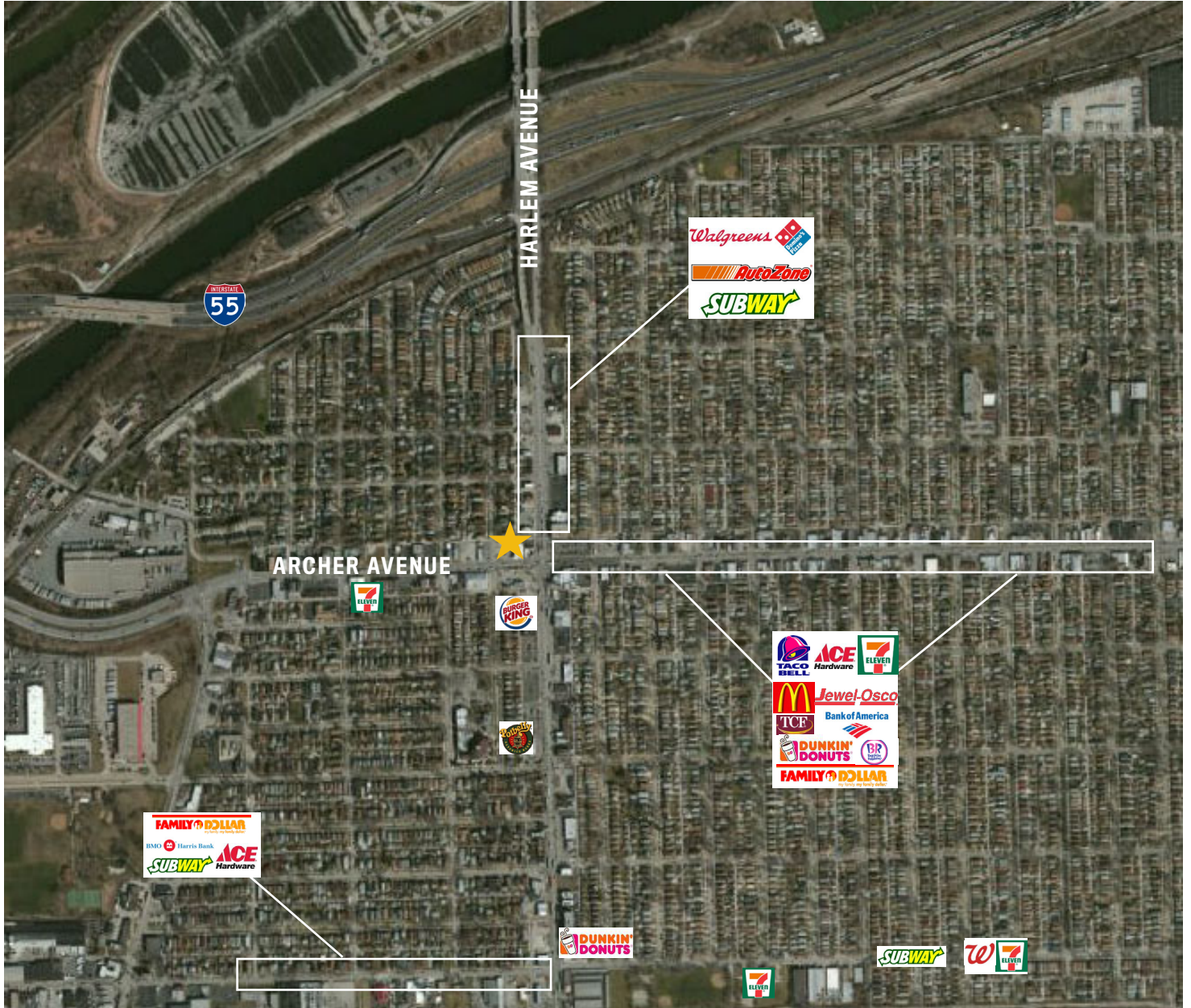
EXCLUSIVE AGENT

Jason Gustavson 312/372-2688  
jason@stonerealestate.com



STONE REAL ESTATE

# HARLEM & ARCHER - SUMMIT, IL



EXCLUSIVE AGENT

Jason Gustaveson 312/372-2688  
jason@stonerealestate.com

STONE | 20  
REAL ESTATE YEARS