



1440 RENAISSANCE DR | PARK RIDGE, IL 60078



## PROPERTY FEATURES

- Complete Renovation in 2013
- Waterfront Offices Available
- 150' Highway Frontage (1-294)
- Tenant Conference Center
- Redesigned Break Area
- Lounge
- Build to Suite Available
- Balconies & Patios Available
- Security Cameras Onsite
- Cathedral-like Reflective Windows
- Manicured Landscaping
- On-Campus Deli

☎ 847-329-7600

✉ [leasing@weissproperties.com](mailto:leasing@weissproperties.com)



The Pinnacle at Park Ridge is owned and leased by Weiss Properties, Inc. Located less than 2 miles west of the Lutheran General Hospital and adjacent to the medical center of Park Ridge and Des Plaines, this building presents an ideal opportunity for healthcare professionals looking to connect with their patients. This stately office building has waterfront views and ample parking for patients and guests. Newly renovated in Fall 2013, the Pinnacle offers modern amenities such as a conference center and lounge area with free wireless internet. These areas present a perfect option for patients and their peers to take a break or conduct business while waiting for their appointment.

### *Multiple Suites Still Available.*

Contact us today to learn more about the property, amenities, and available suites. Inquire about our special rates.



**WEISS**  
PROPERTIES  
INCORPORATED

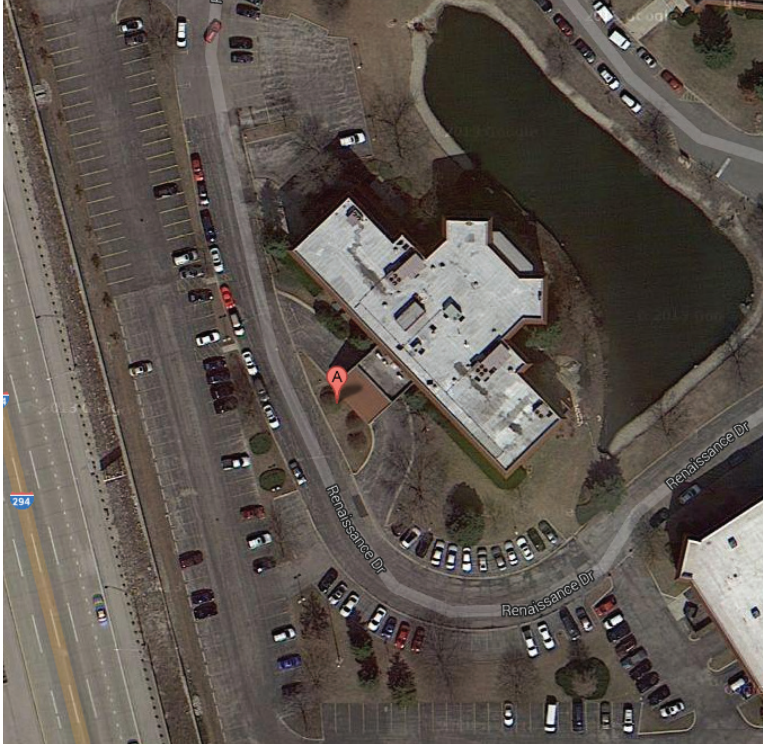
[www.weissproperties.com](http://www.weissproperties.com)  
8170 McCormick Blvd • Suite 100 • Skokie, IL 60076

Tel: **847-329-7600**  
Fax: **847-329-7676**

PROFESSIONAL OFFICES • WATERFRONT

FOR LEASE

////////// Completely rehabilitated and renovated in 2013 //////////



**IDEAL SPACE**

**14,892 ft<sup>2</sup> FULL FLOOR OPPORTUNITY**

FOR MORE INFORMATION PLEASE CONTACT:

847-329-7600

leasing@weissproperties.com



**THE PINNACLE AT PARK RIDGE**  
1440 RENAISSANCE DR. | PARK RIDGE, IL 60078

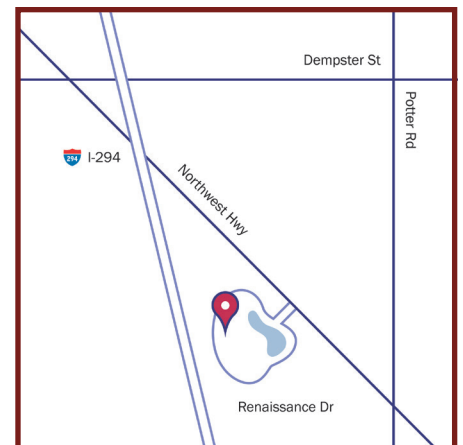


Serviceable to any area of Metropolitan Chicago!

- 1.5 miles west of Lutheran General Hospital
- 7.5 miles from O'Hare International Airport
- 20 miles to Downtown Chicago
- Walking Distance from Public Transportation

This multiple tenant property uses a modified gross office lease with first year rate that includes taxes, operating expenses, electric, and utilities. **RATES NEGOTIABLE.**

The information contained herein was obtained from sources believed reliable; however, Weiss Properties, Inc. makes no guarantees, warranties, or representations as to the completeness or accuracy thereof. The presentation of this property is submitted subject to errors, omissions, change of price or conditions prior to sale or lease, or withdrawal without notice.



www.weissproperties.com  
8170 McCormick Blvd • Suite 100 • Skokie, IL 60076

Tel: **847-329-7600**  
Fax: **847-329-7676**