

# Parker Road Professional Offices

1640 FM 544, Lewisville Texas 75056 – Bld 3



FOR MORE INFORMATION:

T 817-416-3981

F 817-416-8372

[WWW.OFFICEEQUITYSOLUTIONS.COM](http://WWW.OFFICEEQUITYSOLUTIONS.COM)



#### Property Overview

- 6,600 SF Available
- Rate: Call for Pricing
- Property Type: General Office
- Property Sub-Type: Medical
- Building Class: A

Location :Castle Hills

#### Property Highlights

- First class medical office space is available as well as specialty and retail space
- Above market finish out allowance
- Growing community and location are great medical traffic generators



# Parker Road Professional Offices

1640 FM 544, Lewisville Texas 75056 – Bld 3



FOR MORE INFORMATION:

T 817-416-3981

F 817-416-8372

[WWW.OFFICEEQUITYSOLUTIONS.COM](http://WWW.OFFICEEQUITYSOLUTIONS.COM)

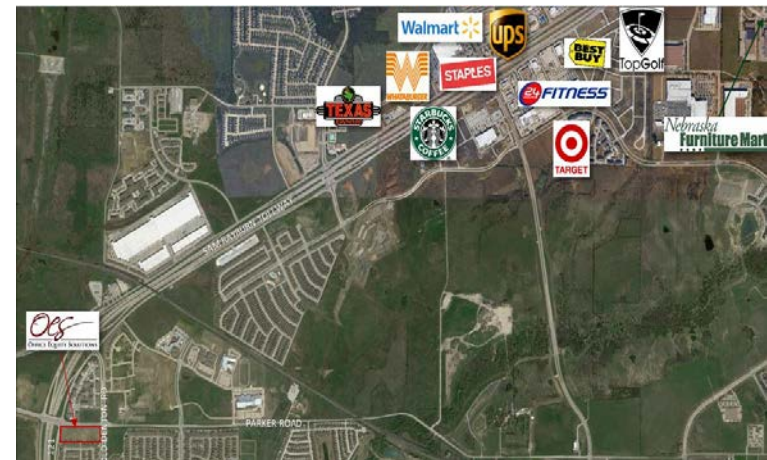


# Parker Road Professional Offices

## 1640 FM 544, Lewisville Texas 75056 – Bld 3



Population	2015			2016 Projection		
	< 1 Mile	< 3 Miles	< 5 Miles	< 1 Mile	< 3 Miles	< 5 Miles
Total Estimated Population	N/A	47,611	198,521	N/A	56,881	232,452
Total Census 2010 Population	N/A	32,510	142,441	N/A	32,510	142,441
Population Change %	N/A	33.7%	30.5%	N/A	56.1%	48.6%
Population Density (People/SQ Mile)	N/A	4,962	5,934	N/A	5,657	6,706
Median Age	N/A	42	41	N/A	43	42
Total Males	N/A	23,651	99,163	N/A	28,335	116,282
Total Females	N/A	23,960	99,358	N/A	28,546	116,170



FOR MORE INFORMATION:

T 817-416-3981

F 817-416-8372

WWW.OFFICEEQUITYSOLUTIONS.COM

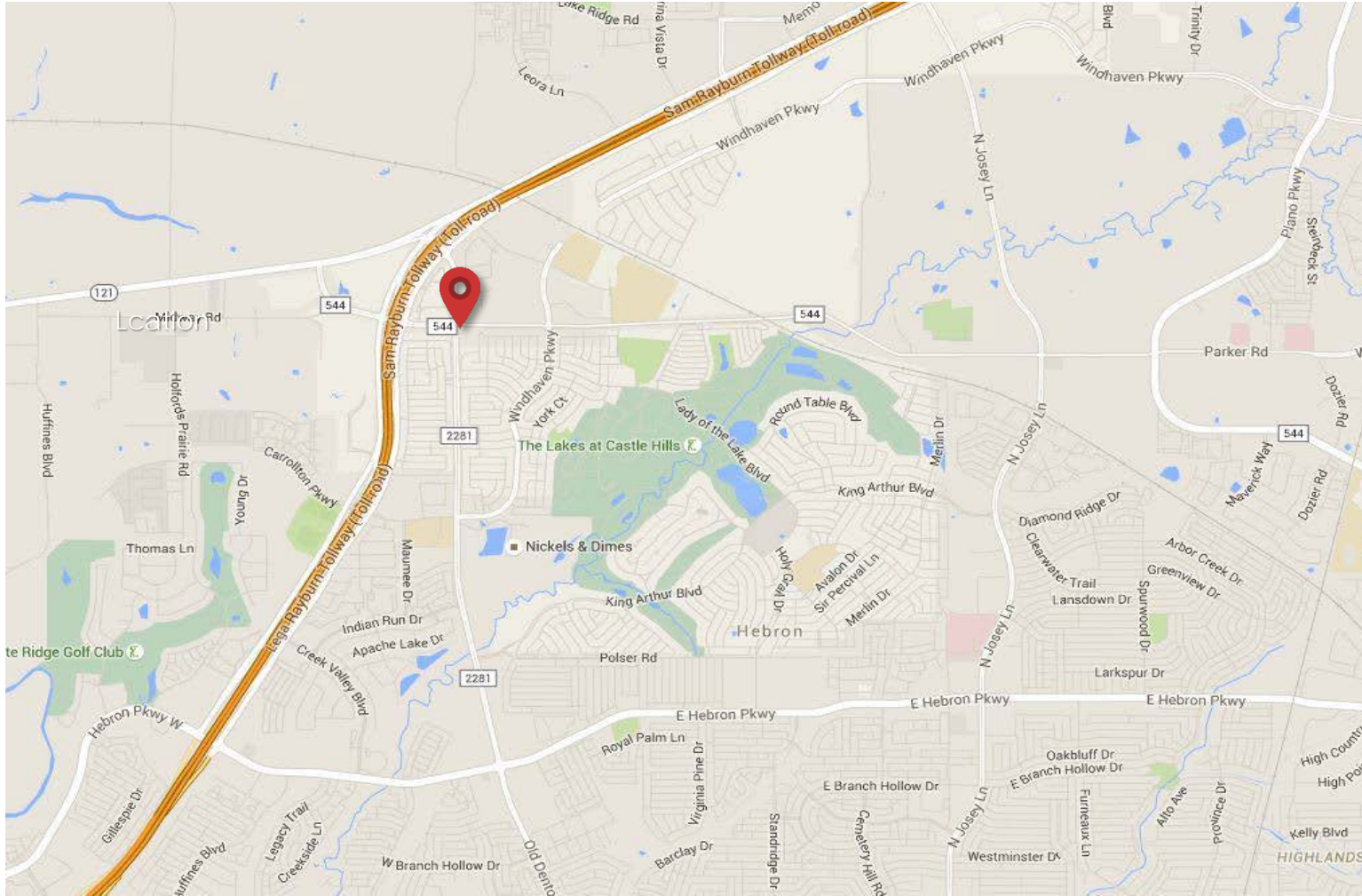






# Parker Road Professional Offices

## 1640 FM 544, Lewisville Texas 75056 – Bld 3



FOR MORE INFORMATION:

T 817-416-3981

F 817-416-8372

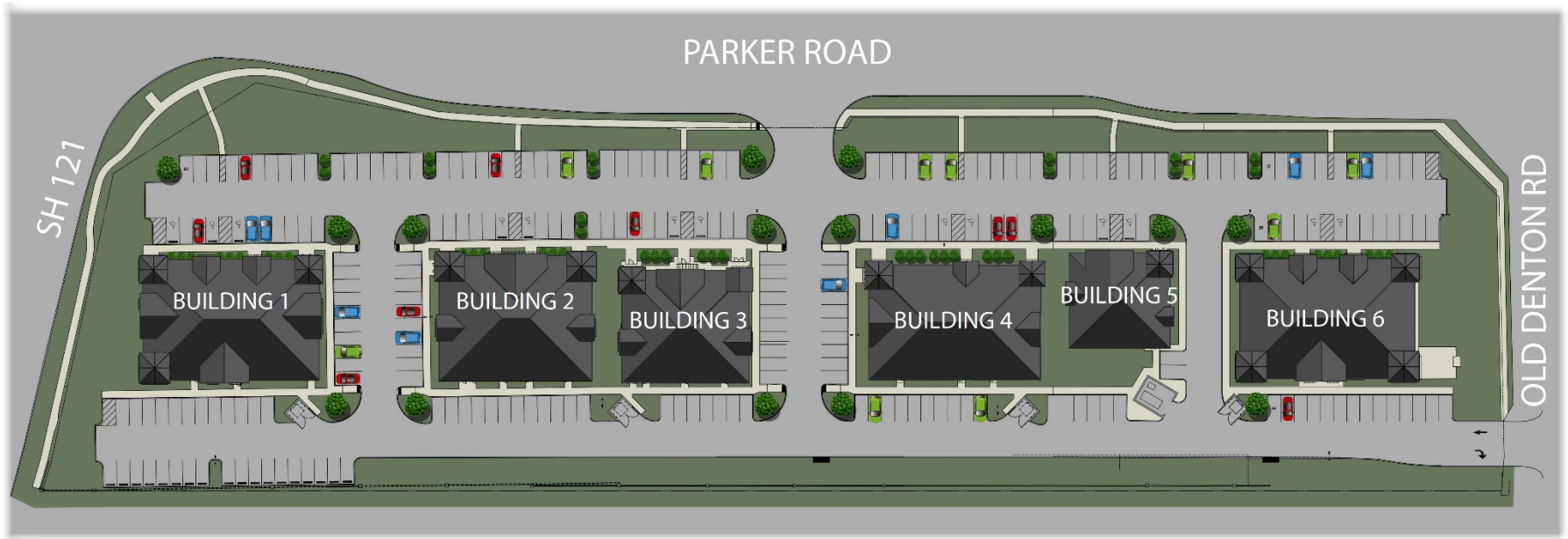
[WWW.OFFICEEQUITYSOLUTIONS.COM](http://WWW.OFFICEEQUITYSOLUTIONS.COM)





# Parker Road Professional Offices

1640 FM 544, Lewisville Texas 75056 – Bld 3



## Parker Road Overall Site

*Parker Road at SH 121 & FM 2281, Lewisville, Texas*



FOR MORE INFORMATION:

T 817-416-3981  
F 817-416-8372  
WWW.OFFICEEQUITYSOLUTIONS.COM

