

RETAIL FOR LEASE

530 EAST 4TH STREET | LONG BEACH, CA 90802



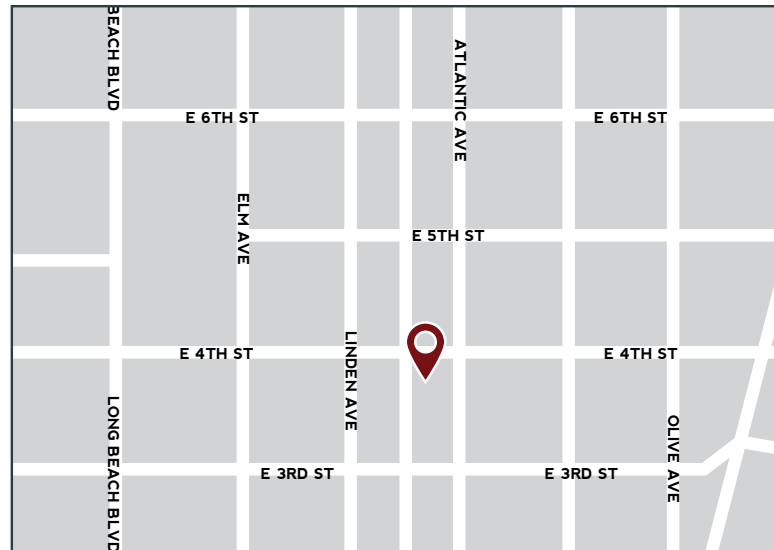
PROPERTY FEATURES

AVAILABLE: 3,000 SF - 8,000 SF

RATE: Negotiable

ZONING: PD30

- Two-Story Brick Building Currently Under Redevelopment
- Restaurant / Retail / Office Use
- Located in Long Beach's East Village
- Exposed Ceiling on 2nd Floor
- Easily Divisible into Smaller Spaces
- Building Signage Available



**CLICK TO VIEW 3D MATTERPORT
VIRTUAL TOUR!**

FOR MORE INFORMATION, PLEASE CONTACT:

YOUR LOCAL MARKET EXPERTS

Sean Lieppman, CCIM

Senior Associate | License ID 01905266

PH: 562.354.2528

E: slieppman@leelalb.com

Graham Gill

Associate | License ID 01903867

PH: 562.354.2518

E: grahamgill@leelalb.com

Noel Aguirre

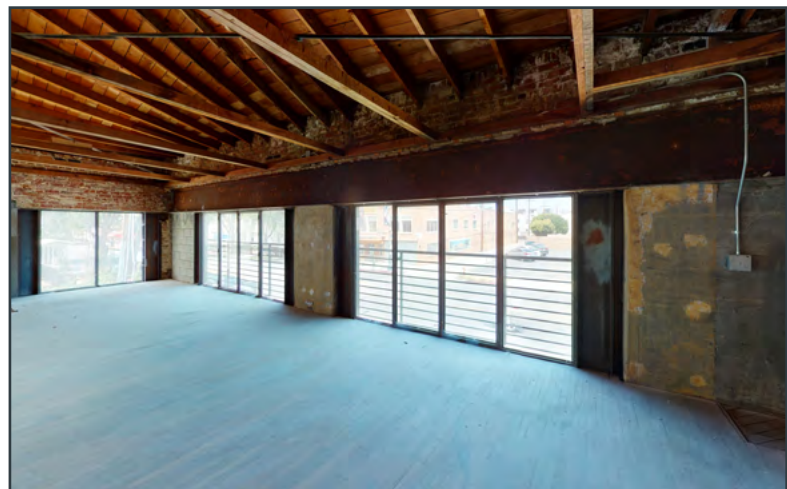
Principal | License ID 01263417

PH: 562.354.2526

E: naguirre@leelalb.com

RETAIL FOR LEASE

530 EAST 4TH STREET | LONG BEACH, CA 90802



Copyright © Lee & Associates. All rights reserved. No part of this work may be reproduced or distributed without written permission of the copyright owner. The information contained in this report was gathered by Lee & Associates from sources believed to be reliable. Lee & Associates, however, makes no representation concerning the accuracy or completeness of such information and expressly disclaims any responsibility for any inaccuracy contained herein 7.28.20

FOR MORE INFORMATION, PLEASE CONTACT:

YOUR LOCAL MARKET EXPERTS

Sean Lieppman, CCIM

Senior Associate | License ID 01905266

PH: 562.354.2528

E: slieppman@leelalb.com

Graham Gill

Associate | License ID 01903867

PH: 562.354.2518

E: grahamgill@leelalb.com

Noel Aguirre

Principal | License ID 01263417

PH: 562.354.2526

E: naguirre@leelalb.com