

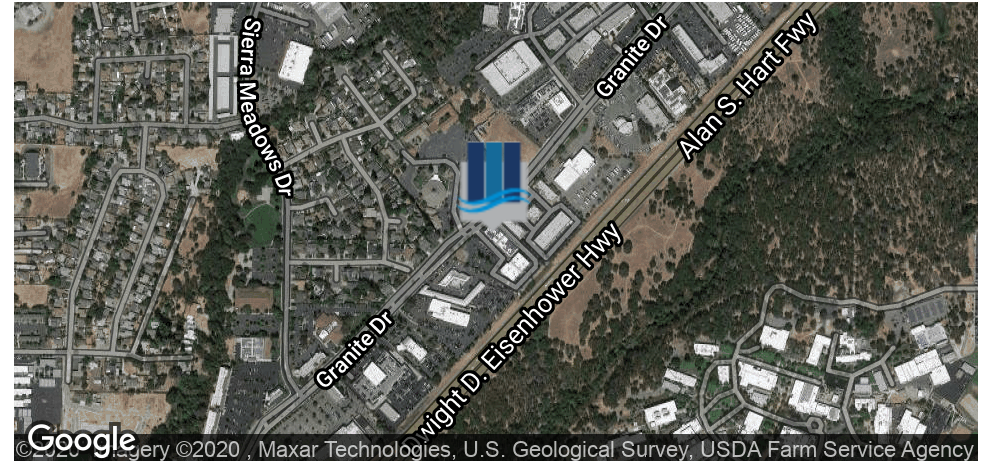
THE HUB - PRIVATE EXECUTIVE SUITES

4465 Granite Dr , Rocklin, CA 95677

OFFICE **FOR LEASE**



CAPITAL RIVERS
COMMERCIAL



OFFERING SUMMARY

Building Name: The Hub

Available Size: up to 285 SF

Property Type: Office

Property Subtype: Executive Suites

Lease Rate: Negotiable

PROPERTY OVERVIEW

Private executive offices centrally located in Rocklin, regularly cleaned and disinfected, 24/7 access to building, plenty of parking, easy access to freeway.



FREE WIFI



CONFERENCE ROOMS



COMMUNITY



EVENTS

RYAN ORN | DIRECTOR OF SALES & LEASING

916.514.5225 x105 | ryan@capitalrivers.com
CalDRE #02070096

JOE BLANTON | DIRECTOR OF SALES & LEASING

916.514.5225 x106 | joe@capitalrivers.com
CalDRE #02012303

EXECUTIVE SUMMARY

THE HUB - PRIVATE EXECUTIVE SUITES

4465 Granite Dr , Rocklin, CA 95677

OFFICE **FOR LEASE**



CAPITAL RIVERS
COMMERCIAL



RYAN ORN | DIRECTOR OF SALES & LEASING

916.514.5225 x105 | ryan@capitalrivers.com
CalDRE #02070096

JOE BLANTON | DIRECTOR OF SALES & LEASING

916.514.5225 x106 | joe@capitalrivers.com
CalDRE #02012303

ADDITIONAL PHOTOS

THE HUB - PRIVATE EXECUTIVE SUITES

4465 Granite Dr , Rocklin, CA 95677

OFFICE BUILDING **FOR LEASE**



CAPITAL RIVERS
COMMERCIAL



RYAN ORN | DIRECTOR OF SALES & LEASING

916.514.5225 x105 | ryan@capitalrivers.com
CalDRE #02070096

JOE BLANTON | DIRECTOR OF SALES & LEASING

916.514.5225 x106 | joe@capitalrivers.com
CalDRE #02012303

ADDITIONAL PHOTOS

THE HUB - PRIVATE EXECUTIVE SUITES

4465 Granite Dr , Rocklin, CA 95677

OFFICE BUILDING **FOR LEASE**



CAPITAL RIVERS
COMMERCIAL

THE HUB

POWERED BY HANEYBIZ



Suite #
1011
1012
1013
1014
1015
1016
1017
1018
1019
1021
1022
1023
1024
1025
1026
1027
1028
1029
1099

4465 GRANITE DRIVE, SUITE 700 ROCKLIN, CA

RYAN ORN | DIRECTOR OF SALES & LEASING

916.514.5225 x105 | ryan@capitalrivers.com
CalDRE #02070096

JOE BLANTON | DIRECTOR OF SALES & LEASING

916.514.5225 x106 | joe@capitalrivers.com
CalDRE #02012303

FLOOR PLANS

THE HUB - PRIVATE EXECUTIVE SUITES

4465 Granite Dr , Rocklin, CA 95677

OFFICE BUILDING **FOR LEASE**



CAPITAL RIVERS
COMMERCIAL

Testimonial:

"One of the hardest things about being a small business owner or solopreneur is the loneliness of working for yourself by yourself. If your company is just you, or if you are working in an office by yourself the lack of energy and creative collaboration gets old quick.

That's one of the reasons I love having an office in The Hub. I still have my private office, but I am surrounded by other entrepreneurs building their companies. Whenever I want to get work done, I shut my door and work. Whenever I want to talk, get feedback, or bounce ideas off of another business owner, I just open my door and I've got 8 entrepreneurs within 30 feet of me.

If you are starting up a company, or if you work solo, becoming a tenant at The Hub is one of the best things you can do for your financial, mental, and emotional health."

Jeremiah Miller
Forgoing Leaders



- HaneyBiz network membership that includes invites to exclusive programs & events
- Access to HaneyBiz support such as accounting and marketing services
- 24/7 access to building
- Regularly cleaned & disinfected per CDC guidelines
- Guest reception area
- Free parking
- Free WiFi, printing, and more!

RYAN ORN | DIRECTOR OF SALES & LEASING

916.514.5225 x105 | ryan@capitalrivers.com
CalDRE #02070096

JOE BLANTON | DIRECTOR OF SALES & LEASING

916.514.5225 x106 | joe@capitalrivers.com
CalDRE #02012303

PROPERTY DETAILS & HIGHLIGHTS