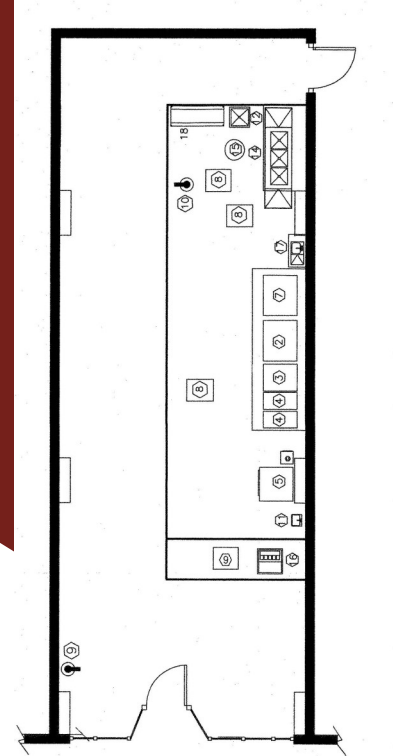


# AVAILABLE FOR LEASE

## Downtown Street Level Restaurant Space



**16 Park Place, Atlanta, GA 30303**

**RATE:** \$35.00/SF NNN

**OPEX:** \$4.00/SF

**SIZE:** 1,154 RSF

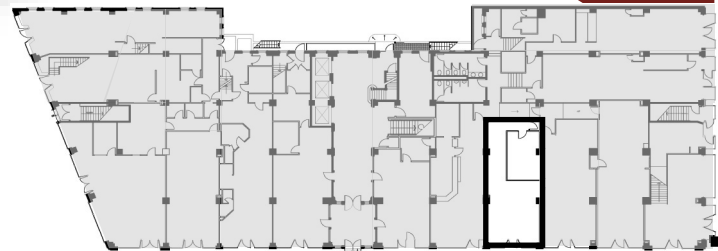
- Space is Currently Built Out as Restaurant with Grease Trap and Vent Hood
- Street Level Restaurant Access and Exposure
- Adjacent to GA State University / Woodruff Park / Five Points
- MARTA Rail & Street Car Access
- Located in the heart of the Opportunity Zone. For more information go to <https://www.investatlanta.com/business/bonds-incentives/opportunity-zones/>
- Building on the National Register of Historic Places

**Dave Smith**

404.869.2605

[dave@joelandgranot.com](mailto:dave@joelandgranot.com)

For complete details, please visit: [www.joelandgranot.com](http://www.joelandgranot.com)



**JOEL & GRANOT**  
COMMERCIAL REAL ESTATE

633 Antone St NW, Atlanta, GA 30318  
(ph) 404.869.2600 | (fax) 404.869.2601

The information was obtained from sources we assume are reliable. We do not doubt its accuracy, however we do not guarantee it. No liability is assumed for errors and omissions. Information is subject to changes and withdrawal without notice.