



UNION
SQUARE

ONE UNION SQUARE

COMBINED SUITE

1312 & 1400

RSF

28,367

CONTACT

Mark Barbieri

Executive Vice President
206-613-5316
mbarbieri@waholdings.com

Tim Holt

Executive Vice President
206-613-5330
tholt@waholdings.com

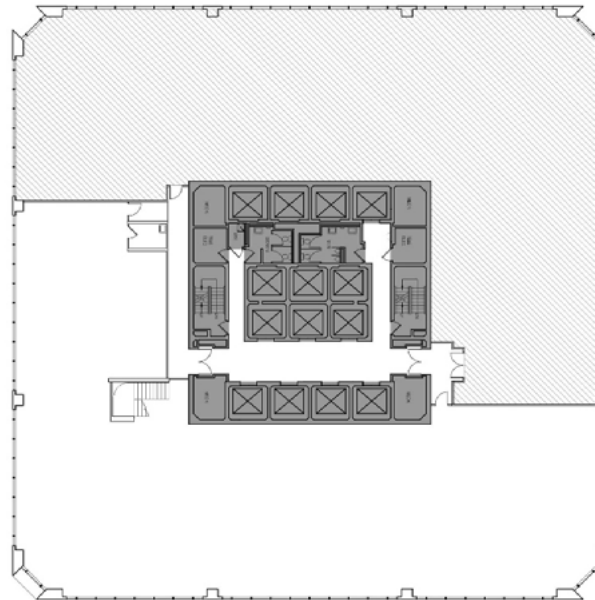
Mick Newell

Vice President of Leasing
206-613-5318
mnewell@waholdings.com

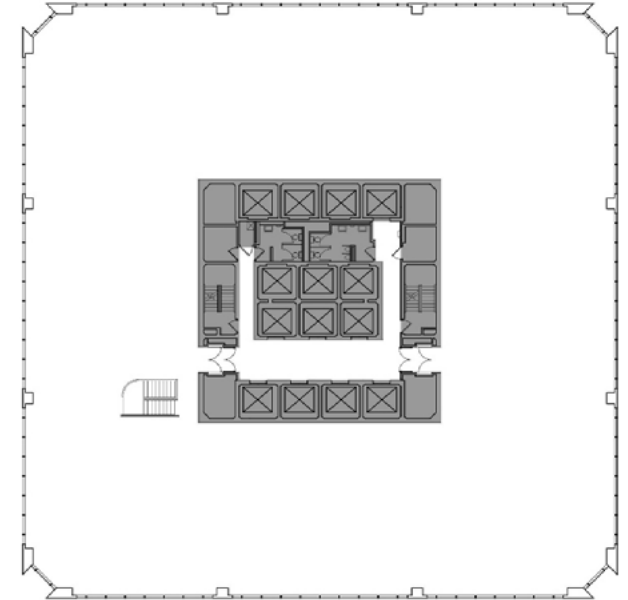
Proudly Managed by



SUITE 1312

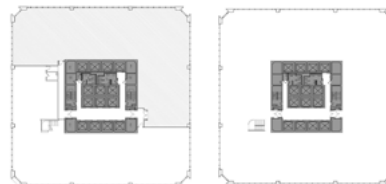


SUITE 1400



N

N



PROPERTY TOUR