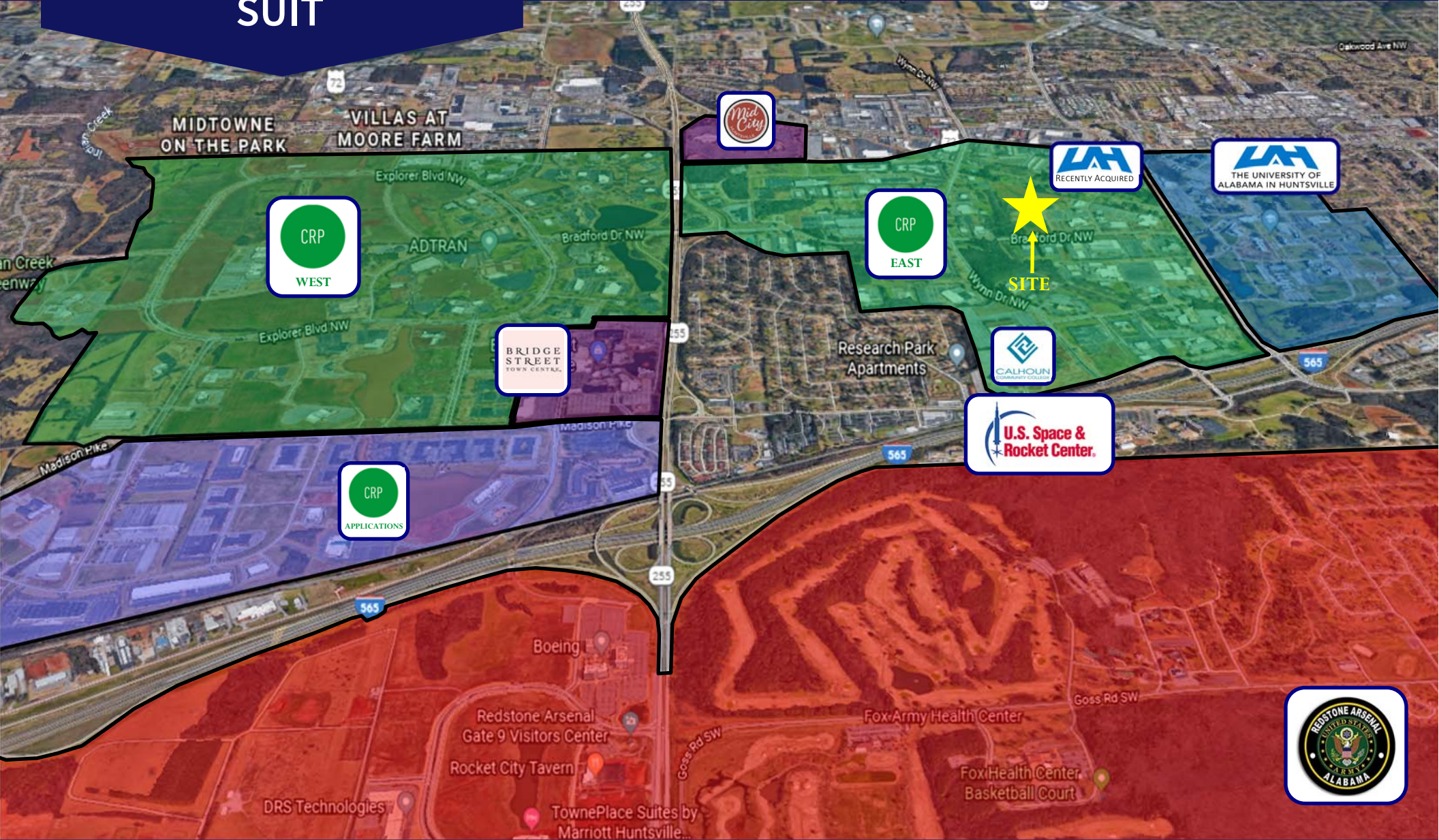


±7.7 ACRES - BUILD TO SUIT

# CUMMINGS RESEARCH PARK EAST DEVELOPMENT SITE



Contact Alex Samples at:

525 Madison Street, Suite 205, Huntsville, AL 35801  
alex@samplesproperties.com  
256.533.0003



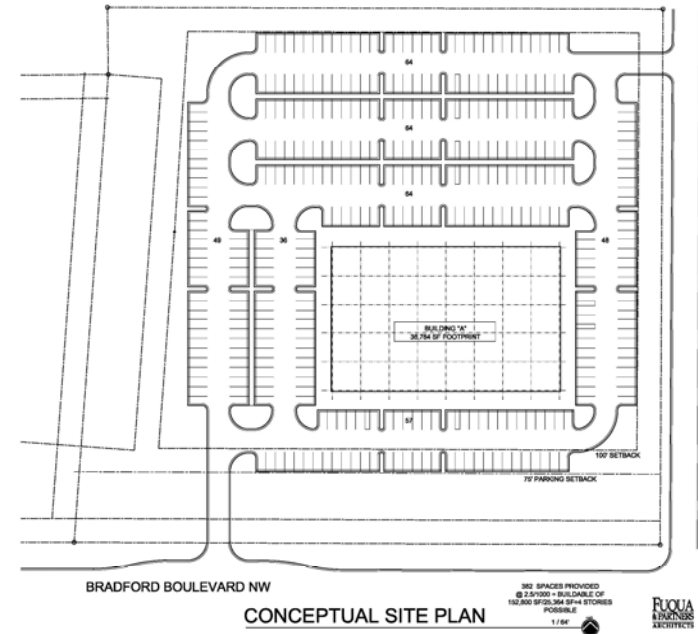
# SITE OVERVIEW

RP ZONING

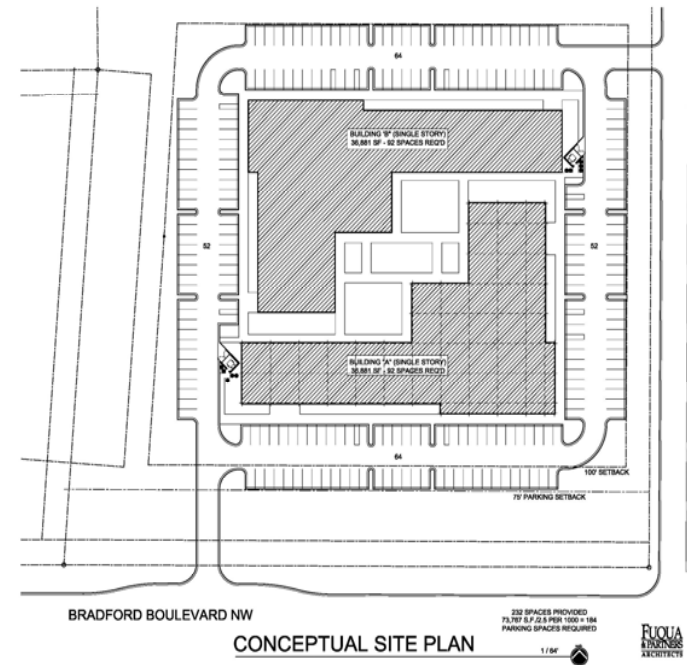
LOCATED IN THE CENTER OF CUMMINGS RESEARCH PARK EAST (2ND LARGEST RESEARCH PARK IN AMERICA)

MULTIPLE OFFICE / FLEX/ INDUSTRIAL OPTIONS

7.7 ACRES WITH APPROXIMATELY 608 FT OF FRONTAGE ON BRADFORD DRIVE A MAIN ARTERY CONNECTING CUMMINGS RESEARCH PARK TO DOWNTOWN HUNTSVILLE



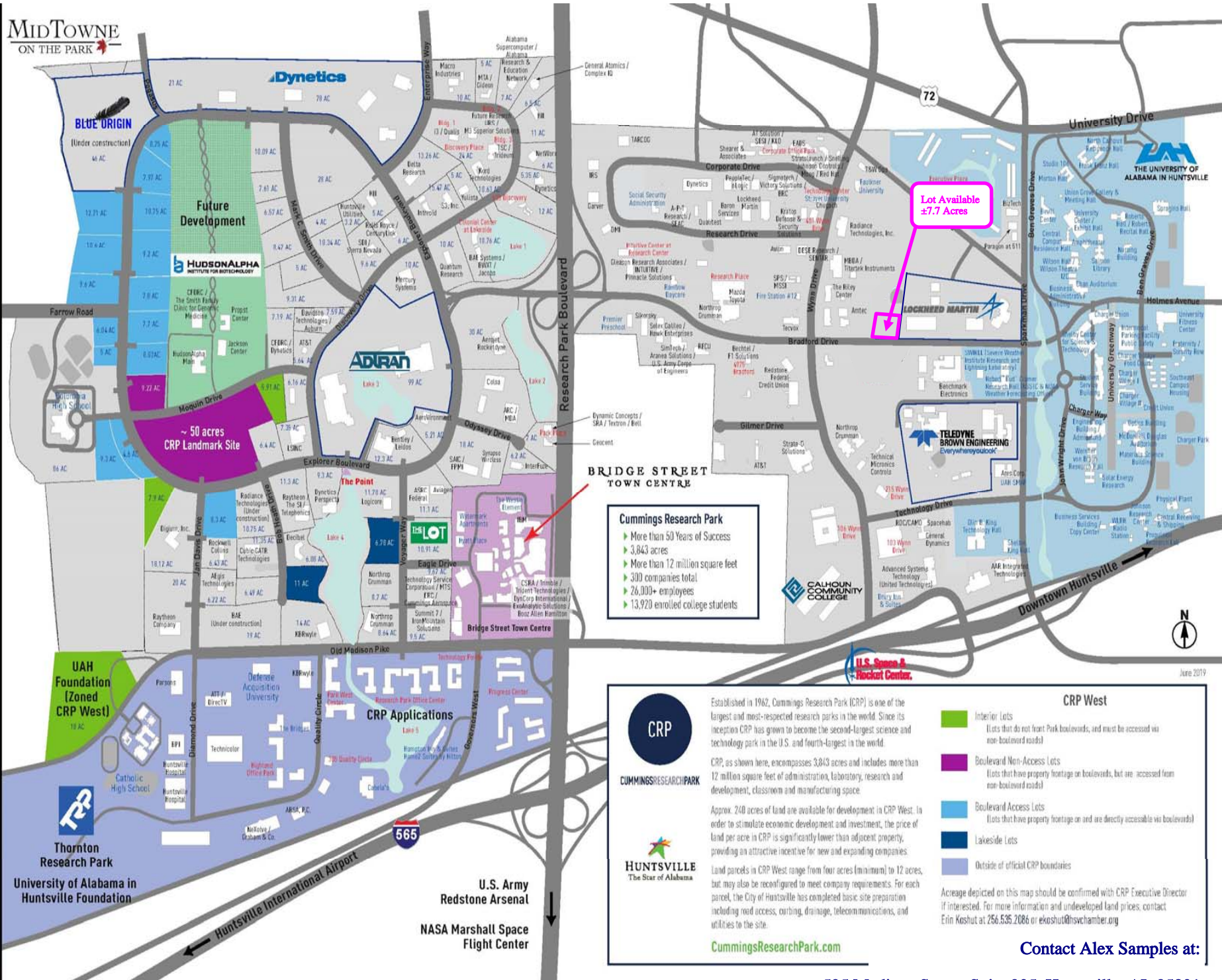
## CONCEPTUAL SITE PLANS



Contact Alex Samples at:

525 Madison Street, Suite 205, Huntsville, AL 35801  
alex@samplesproperties.com  
256.533.0003





**Cummings Research Park**

- ▶ More than 50 Years of Success
- ▶ 3,843 acres
- ▶ More than 12 million square feet
- ▶ 300 companies total
- ▶ 26,000+ employees
- ▶ 13,920 enrolled college students

**CRP**

**CUMMINGS RESEARCH PARK**

**HUNTSVILLE**  
The Star of Alabama

Established in 1962, Cummings Research Park (CRP) is one of the largest and most-respected research parks in the world. Since its inception CRP has grown to become the second-largest science and technology park in the U.S. and fourth-largest in the world.

CRP, as shown here, encompasses 3,843 acres and includes more than 12 million square feet of administration, laboratory, research and development, classroom and manufacturing space.

Approx. 248 acres of land are available for development in CRP West. In order to stimulate economic development and investment, the price of land per acre in CRP is significantly lower than adjacent property, providing an attractive incentive for new and expanding companies.

Land parcels in CRP West range from four acres (minimum) to 12 acres, but may also be reconfigured to meet company requirements. For each parcel, the City of Huntsville has completed basic site preparation including road access, curbing, drainage, telecommunications, and utilities to the site.

[CummingsResearchPark.com](http://CummingsResearchPark.com)

**CRP West**

- Interior Lots  
Lots that do not front Park boulevards, and must be accessed via non-boulevard roads
- Boulevard Non-Access Lots  
Lots that have property frontage on boulevards, but are accessed from non-boulevard roads
- Boulevard Access Lots  
Lots that have property frontage on and are directly accessible via boulevards
- Lakeside Lots
- Outside of official CRP boundaries

Acresage depicted on this map should be confirmed with CRP Executive Director if interested. For more information and undeveloped land prices, contact Erin Koshut at 256.535.2086 or ekoshut@hsvchamber.org

**Contact Alex Samples at:**

525 Madison Street, Suite 205, Huntsville, AL 35801  
 alex@samplesproperties.com  
 256.533.0003