

# 587 FIFTH



5TH FLOOR

▶ TAKE A VIRTUAL TOUR

3RD FLOOR

▶ TAKE A VIRTUAL TOUR

NEWMARK



## TEST-FIT



FLOOR / AREA	TERM	RENT	AVAILABILITY
Entire 3rd Floor: 4,425 RSF	1 - 3 years	\$49.00	Immediate
Entire 5th Floor: 4,425 RSF	5 - 10 years	\$54.00	Immediate

## COMMENTS

- Newly renovated lobby and passenger elevators
- Column free floor plate; maximum efficiency
- Built floors; move-in condition ready for occupancy
- Low density building; full floor tenants
- Walking distance to Grand Central and Penn Station

NICK BERGER  
212-372-2411  
nick.berger@nmrk.com

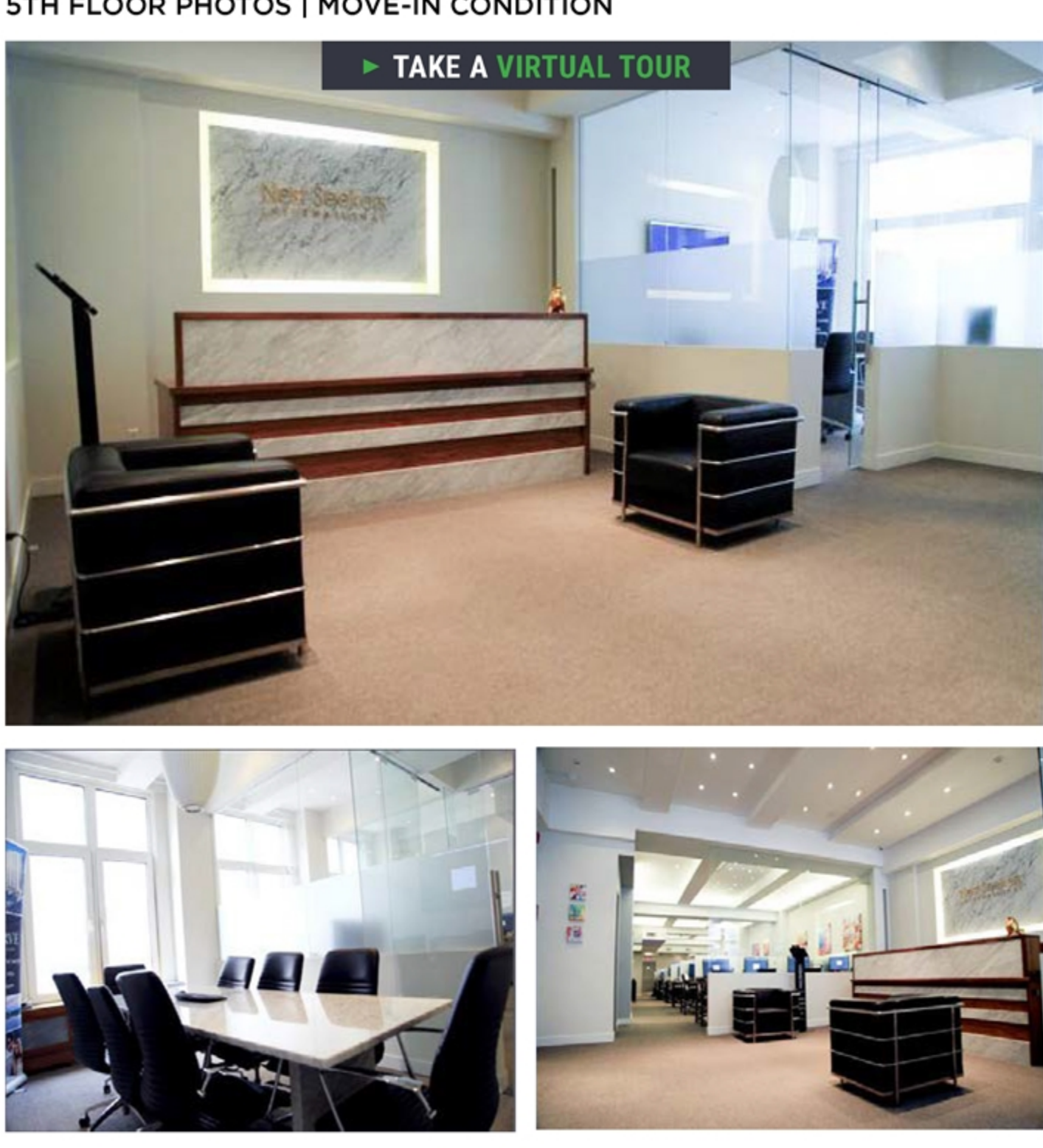
GREGORY DIGIOIA  
212-372-2330  
gregory.digioia@nmrk.com



## 3RD FLOOR PHOTOS | BRAND NEW INSTALLATION



## 5TH FLOOR PHOTOS | MOVE-IN CONDITION



The information contained herein has been obtained from sources deemed reliable but has not been verified and no guarantee, warranty or representation, either express or implied, is made with respect to such information. Terms of sale or lease and availability are subject to change or withdrawal without notice.

NICK BERGER  
212-372-2411  
nick.berger@nmrk.com

GREGORY DIGIOIA  
212-372-2330  
gregory.digioia@nmrk.com



[DOWNLOAD BROCHURE](#)

125 Park Avenue, New York, NY 10017 | 212-372-2000

The information contained herein has been obtained from sources deemed reliable but has not been verified and no guarantee, warranty or representation, either express or implied, is made with respect to such information. Terms of sale or lease and availability are subject to change or withdrawal without notice.

©2022 Newmark. All Rights Reserved.