

WHITEWATER

12501 WHITEWATER, MINNETONKA





SUBURBAN OFFICE TRANS FORMED

See yourself at

WHITEWATER

- Highly desirable Minnetonka location
- Exterior signage available
- Class A amenities package
- Abundant natural light
- Outdoor green space
- Trails for biking and walking
- New common area upgrades
- Opportunities to brand your space
- Ideal corporate headquarters location
- High parking ratio
- Efficient floor plates

ATTRACT. RETAIN.

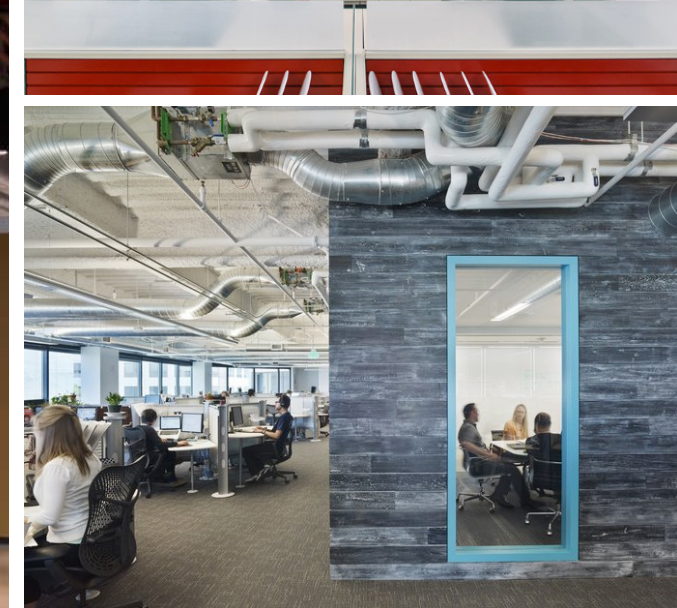
Establish a new standard as a progressive employer who wants to attract, engage and retain the best and brightest talent in today's competitive environment.

Featuring the most desirable benefits demanded by the workforce of today and tomorrow, This renovated workplace will stimulate happy employees, productivity and profit.



INNOVATE. LEAD.

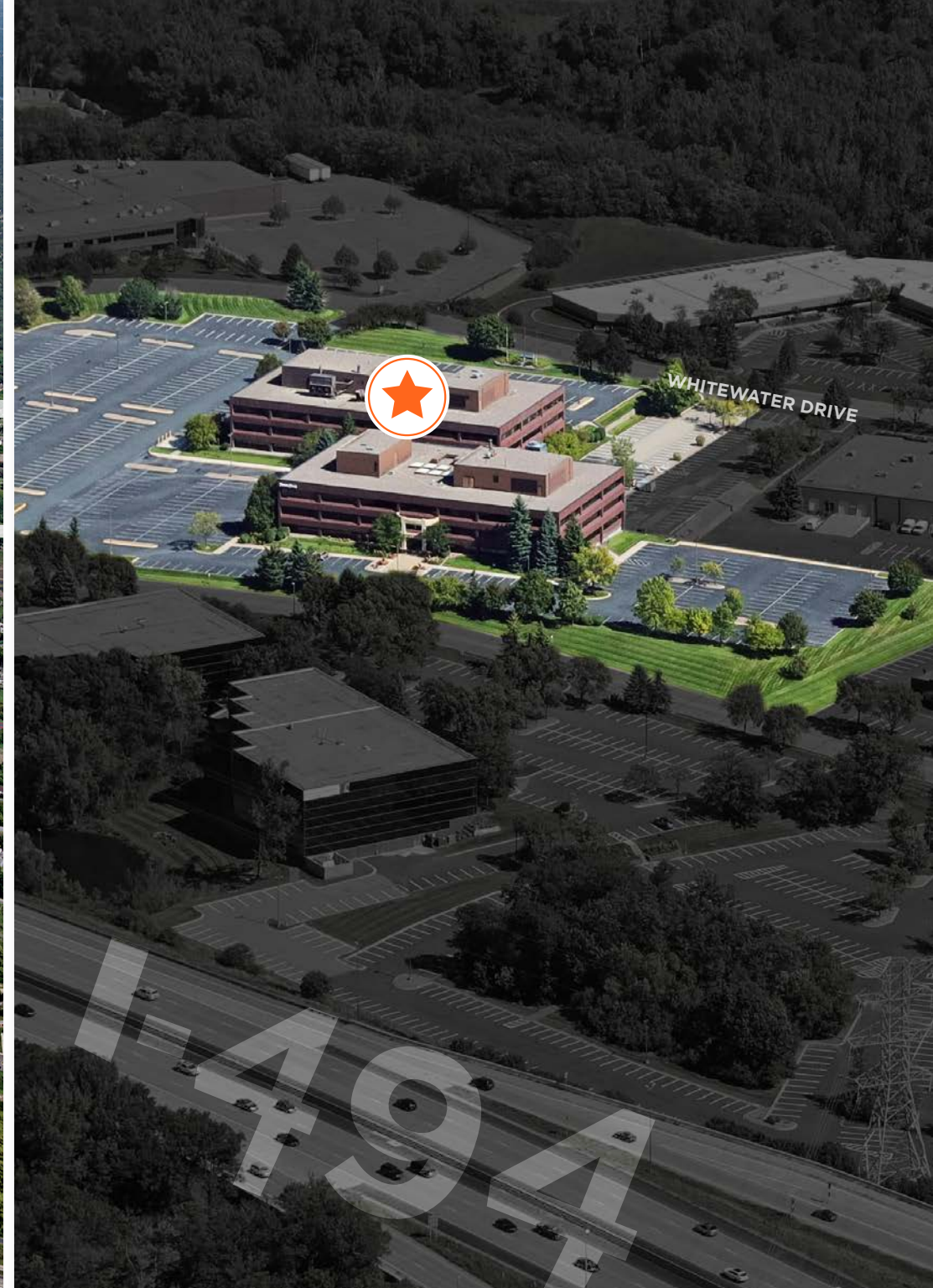
Whitewater offers you a blank canvas to customize a unique work space and brand image. With state-of-the-art building design and placement within a robust, natural and amenity-rich setting, you'll be at the forefront of the progressive approach to the new urbanism that tomorrow's workforce demands.



BE ACTIVE. BE WELL.

With a strong focus on health and wellbeing, this new environment will feature a wide variety of indoor and outdoor recreational and fitness amenities including access to regional bike trails. State-of-the-art buildings will feature sustainable elements that maximize daylight, promote energy efficiency and provide superior indoor air quality.



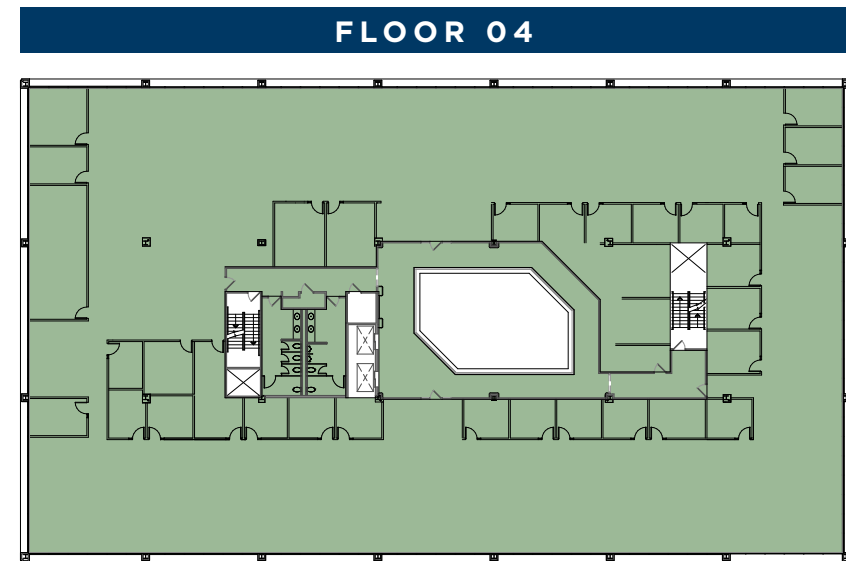
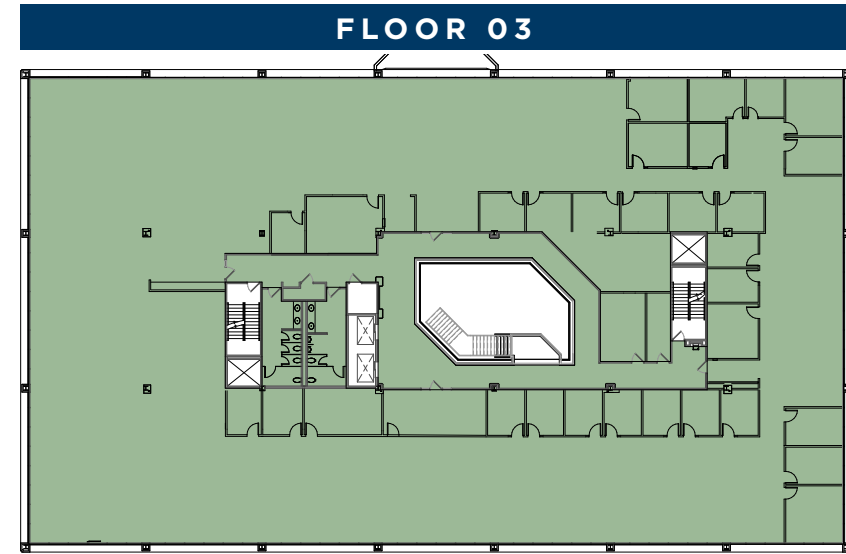
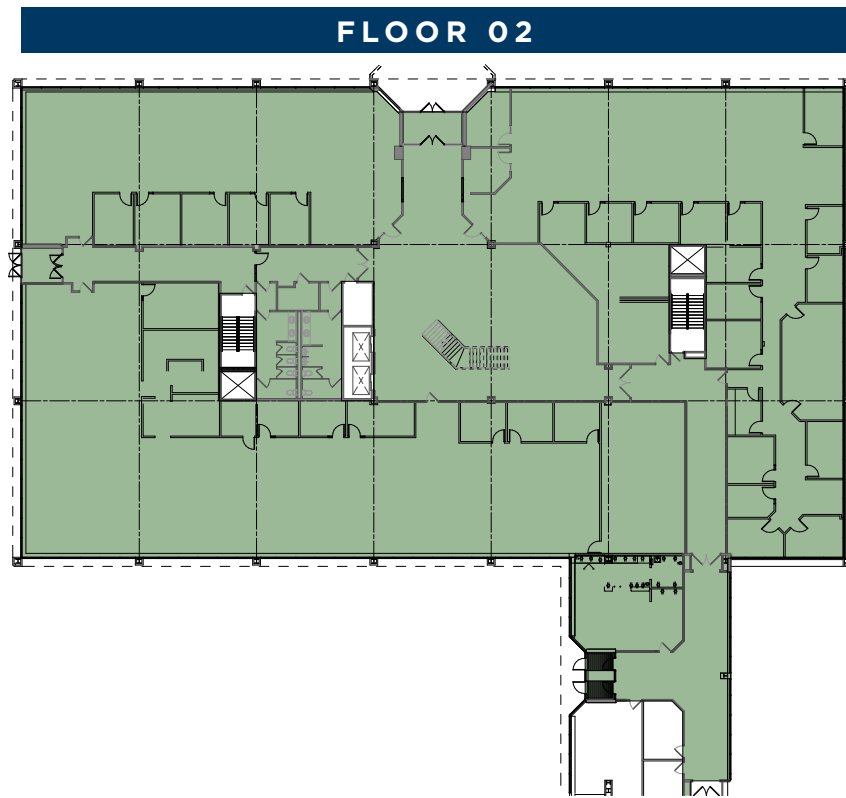
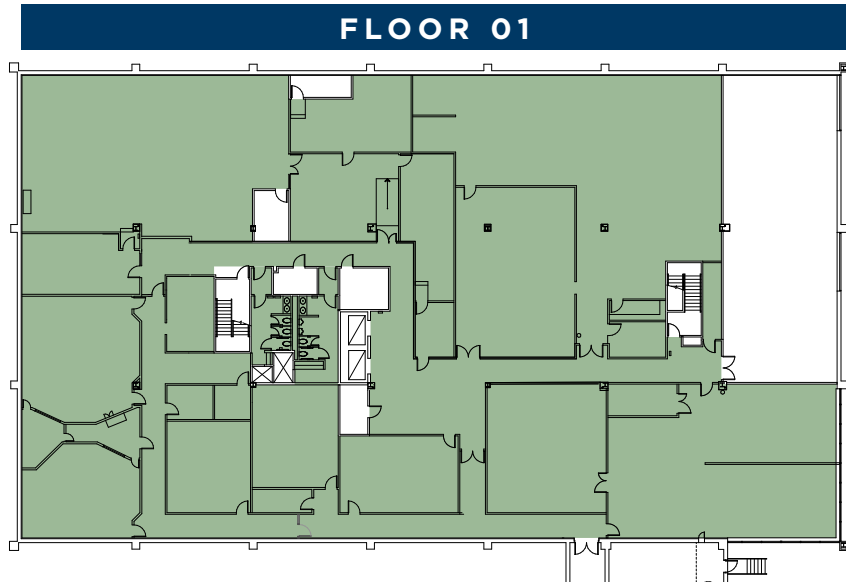




BRING YOUR VISION TO LIFE

FLOOR 04
FLOOR 03
FLOOR 02
FLOOR 01

**100,000 SF
AVAILABLE**





SEE YOURSELF HERE.

WHITEWATER

12501 WHITEWATER, MINNETONKA

PETER FITZGERALD 952 241 1111 PETER.FITZGERALD@CUSHWAKE.COM

TOM SAMPAIR 952 893 8277 TOM.SAMPAIR@CUSHWAKE.COM

 CUSHMAN &
WAKEFIELD

 RYAN