



256 E PARRIS AVE, HIGH POINT,
NC 27262



FOR SALE

FOR SALE: \$395,000

256 E Parris Ave, High Point, NC 27262

Parcel ID: Parcel: 199873

Parcel for sale that is located in high traffic corridor of growing High Point.

Parris Ave is located closely to N Main St. and Eastchester Dr. Both with traffic counts above 20,000 VPD

Site could be a good fit for QSR, small retail center, or office user

Adjacent parcels include: Outback Steakhouse, ABC Beverages, and Harris Teeter Anchor Center

- FOR SALE: \$395,000
- ZONING: RC (RETAIL CENTER DISTRICT)
- +/- 1.095 ACRES
- WATER/SEWER AT SITE
- FLAT TOPOGRAPHY
- +/- 155 FT OF STREET FRONTAGE

**All information needs to be independently verified.*



Reid Baker

reidb@newbranchre.com

Doug Donia

dougd@newbranchre.com

704-786-8888



new branch
REAL ESTATE ADVISORS

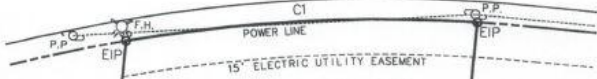
MAGNETIC PER P.B. 11



EASTCHESTER DR
(N.C. HWY 68)

68' R/W

EAST PARRIS AVENUE



NOTE:
BLANKET UTILITY EASEMENT CONSISTS
OF 5' EXTENDING TO EITHER SIDE AND
RUNNING ALONG THE DISTANCE OF
ANY ELECTRIC UTILITY LINE OF THE
PROPERTY PER P.B. 117 PG. 121.

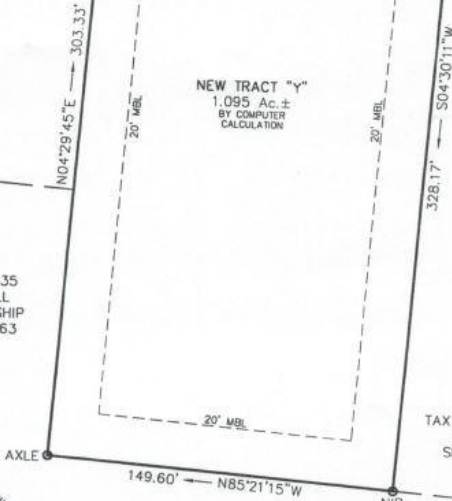
TAX PARCEL 3, BLOCK 6, MAP 335
SBREC ASSOCIATES
A NEW YORK PARTNERSHIP
D.B. 3417 PG. 1737

NEW TRACT "Y"
1.095 Ac. ±
BY COMPUTER
CALCULATION

NEW TRACT "Z"

TAX PARCEL 1
BLOCK 6, MAP 335
HIGH POINT MALL
LIMITED PARTNERSHIP
D.B. 4111 PG. 1763

TAX PARCEL 5, BLOCK 6, MAP 335
CAROLINA CONFERENCE OF
SEVENTH DAY ADVENTIST, INC.
D.B. 2400 PG. 775



Reid Baker

Doug Donia

reidb@newbranchre.com

dougd@newbranchre.com



704-786-8888

new branch
REAL ESTATE ADVISORS