

**FOR SALE**



**CONTACT**  
**RED Partners**

**ROB HORD**  
**rob@redpart.com**

Office: 704.338-1758  
 Fax: 704.333.7993

**www.redpart.com**

*Every effort has been made to ensure the accuracy of the information presented but no liability is assumed for errors or omissions. This offering is subject to prior sale, lease, change or withdrawal without prior notice and approval of owner.*

**DESCRIPTION:** Vacant Land, Mixed-use Development Opportunity. Close proximity to Retail and Residential.

**ADDRESS:** 2073 Providence Road South  
 Waxhaw, NC 28173

**PARCEL ID:** 06162017 – 39.05 acres  
 06162016 - .65 acres  
 06162015 - .496 acres

**LOT SIZE:** Combined 3 Parcels = 40.196 acres

**SALES PRICE:** \$9,050,000

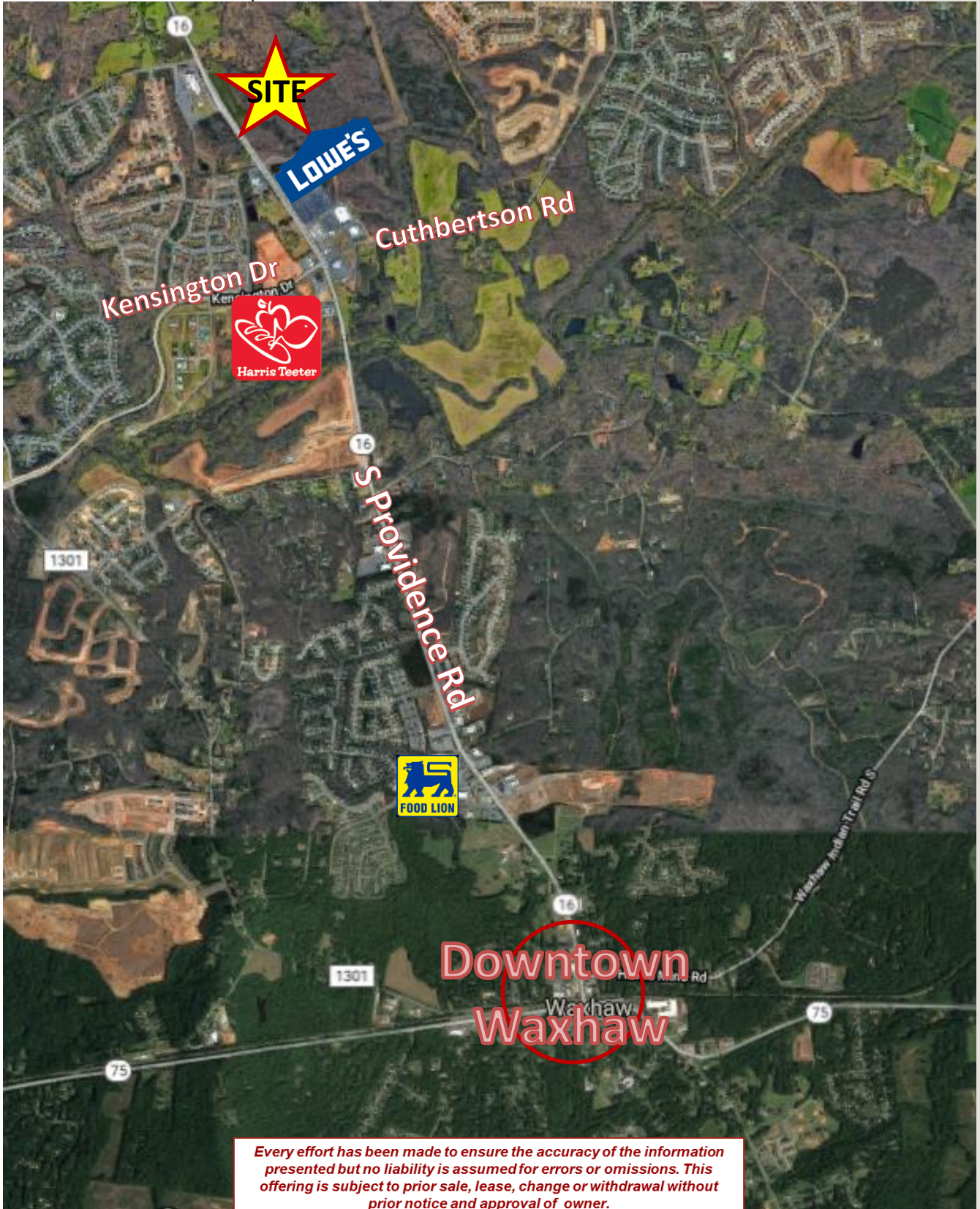
**CURRENT ZONING:** R-40 – Located in Union County. If annexed into Waxhaw, their future land use plan calls for Mixed-use with the possibility of Commercial and Residential, both detached and attached.

R + E + D

REAL ESTATE DEVELOPMENT PARTNERS

FOR SALE





Every effort has been made to ensure the accuracy of the information presented but no liability is assumed for errors or omissions. This offering is subject to prior sale, lease, change or withdrawal without prior notice and approval of owner.