

LAND FOR SALE

Bay Road, Dover, DE (two lots with frontage on Bay Road-will divide)



\$300,000 per acre



- Tax Parcel Numbers: ED-05-077.00-01 parcels 11.00-000 & 10.01
- Acreage: Parcel 10.01 is 5.0 +/- acres and Parcel 11.00 is 1.5 +/- acres
- Zoning for both parcels is C4
- Parcel 10.01 is 550 Bay Road, Parcel 11.00 is Cowgill Street, Dover
- 2005 AADT Traffic Count 43,226

For more information: *Charlie Rodriguez*

ccrod1@aol.com

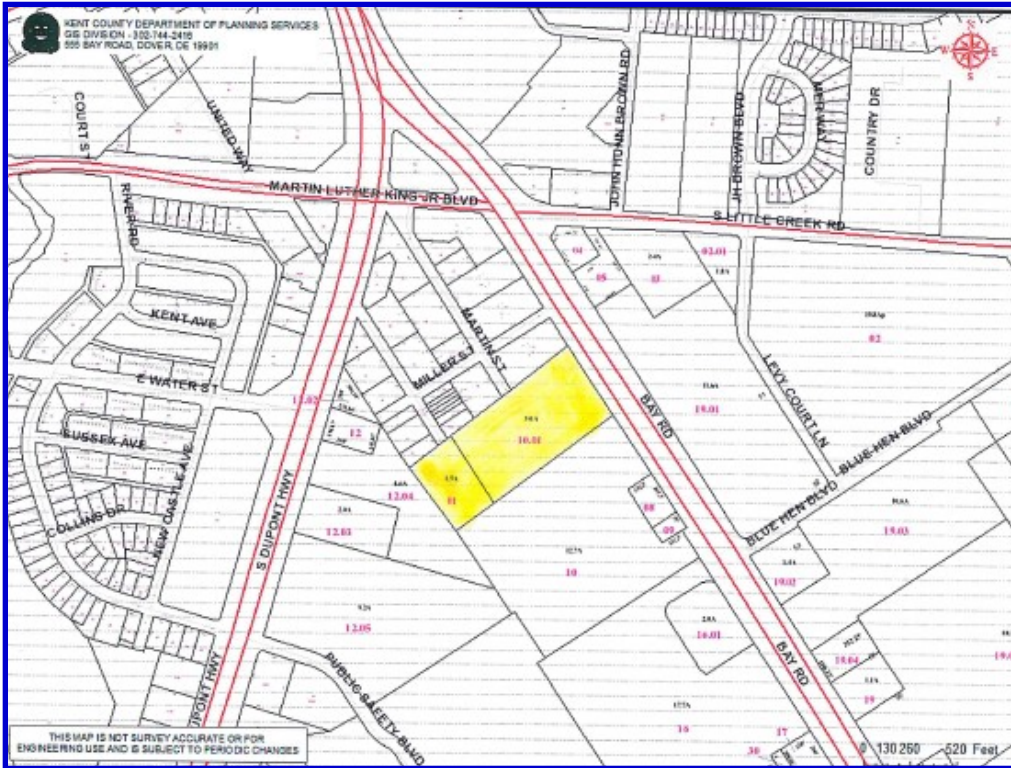
ALL INFORMATION CONTAINED HEREIN IS BELIEVED TO BE ACCURATE, HOWEVER WAS OBTAINED FROM THIRD PARTIES AND R & R COMMERCIAL REALTY, INC. DOES NOT WARRANT AS TO THE ACCURACY SUBMITTED SUBJECT TO CHANGES OR MODIFICATIONS WITHOUT NOTICE. LISTING BROKER REPRESENTS THE SELLERS INTEREST. THE ATTACHED PLAN IS A CONCEPTUAL PLAN ONLY.

46 S State Street
Dover, DE 19901
302-674-3400

www.randrcommercialrealty.com

LAND FOR SALE

Bay Road, Dover, DE (two lots with frontage on Bay Road-will divide)



DEMOGRAPHICS		1 mile	3 mile	5 mile
	POPULATION 2011	6,895	41,036	67,013
	MEDIUM INCOME 2011	36,019	48,897	54,227

For more information: *Charlie Rodriguez*

ccrod1@aol.com

ALL INFORMATION CONTAINED HEREIN IS BELIEVED TO BE ACCURATE, HOWEVER WAS OBTAINED FROM THIRD PARTIES AND R & R COMMERCIAL REALTY, INC. DOES NOT WARRANTY AS TO THE ACCURACY SUBMITTED SUBJECT TO CHANGES OR MODIFICATIONS WITHOUT NOTICE. LISTING BROKER REPRESENTS THE SELLERS INTEREST. THE ATTACHED PLAN IS A CONCEPTUAL PLAN ONLY.

46 S State Street
Dover, DE 19001
302-674-3400

www.randrcommercialrealty.com